



MLS 7002892 Land

\$510,000

119 Acres
Raw Land

20411 County Highway 39
Osage MN 56570

Status: Active

Description:

This beautiful property, ideally located between Detroit Lakes and Park Rapids, offers 119+or- scenic acres of stunning woods and pasture once farmed years ago. Outdoor enthusiasts will appreciate the two deer stands, making this an excellent spot for hunting and wildlife watching. The property also includes an older home with potential for the right buyer ready to take on a renovation project. With abundant space, privacy, and nearby Wolf Lake offering fishing and summer recreation, this property is a true outdoor lover's retreat.

Additional Details:

Year Built	1908
Lot Acres	119
Lot Dimensions	119 Acres
School District	1106
Taxes	\$1,606
Taxes with Assessments	\$1,606
Tax Year	2025

Additional Features:

Driving Directions:

From Osage, Head toward Main St. Turn right (S) at the 2nd cross street onto MN-34 W. Turn left(S) onto Co Hwy 39.

You may also type in the address to your GPS and it will take you to the property.



Listed By:
Keller Williams Realty Profess

Affinity Real Estate Inc. participates in the Regional Multiple Listing Service of Minnesota, Inc Broker Reciprocity (sm) program, allowing us to display other broker's listings on our website. All properties are subject to prior sale, change or withdrawal.



Call Affinity Real Estate

218-237-3333

info@affinityrealestate.com



Affinity Real Estate - 600 Park Avenue South - Park Rapids MN 56470



website: www.AffinityRealEstate.com | email: info@affinityrealestate.com | office: 218-237-3333 | fax: 218-237-3377



\$510,000
MLS 7002892 Land
20411 County Highway 39
Osage MN 56570



website: www.AffinityRealEstate.com | email: info@affinityrealestate.com | office: 218-237-3333 | fax: 218-237-3377



\$510,000
 MLS 7002892 Land
 20411 County Highway 39
 Osage MN 56570



website: www.AffinityRealEstate.com | email: info@affinityrealestate.com | office: 218-237-3333 | fax: 218-237-3377



\$510,000

MLS 7002892 Land
20411 County Highway 39
Osage MN 56570



website: www.AffinityRealEstate.com | email: info@affinityrealestate.com | office: 218-237-3333 | fax: 218-237-3377



\$510,000
 MLS 7002892 Land
 20411 County Highway 39
 Osage MN 56570



website: www.AffinityRealEstate.com | email: info@affinityrealestate.com | office: 218-237-3333 | fax: 218-237-3377



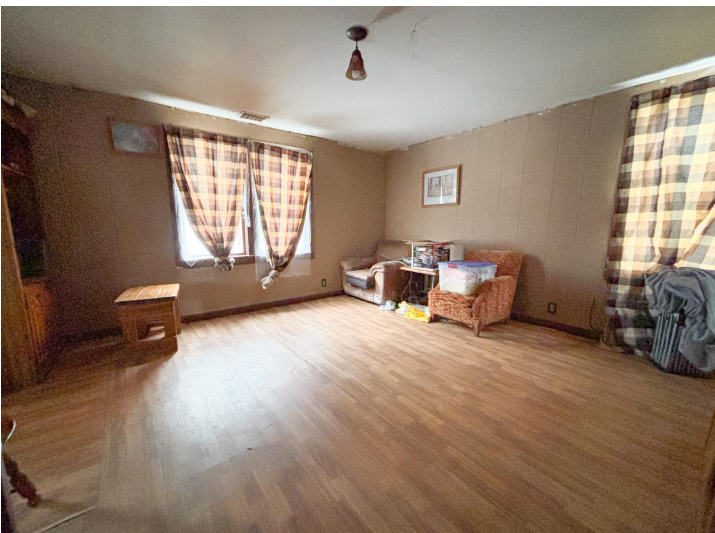
\$510,000
MLS 7002892 Land
20411 County Highway 39
Osage MN 56570



website: www.AffinityRealEstate.com | email: info@affinityrealestate.com | office: 218-237-3333 | fax: 218-237-3377



\$510,000
 MLS 7002892 Land
 20411 County Highway 39
 Osage MN 56570



website: www.AffinityRealEstate.com | email: info@affinityrealestate.com | office: 218-237-3333 | fax: 218-237-3377

Affinity
REAL ESTATE INC

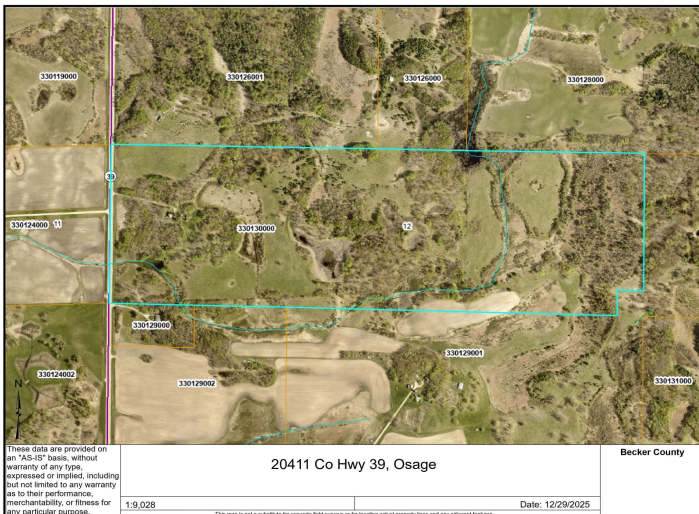
\$510,000
MLS 7002892 Land
20411 County Highway 39
Osage MN 56570



website: www.AffinityRealEstate.com | email: info@affinityrealestate.com | office: 218-237-3333 | fax: 218-237-3377

Affinity
REAL ESTATE INC

\$510,000
MLS 7002892 Land
20411 County Highway 39
Osage MN 56570



website: www.AffinityRealEstate.com | email: info@affinityrealestate.com | office: 218-237-3333 | fax: 218-237-3377



\$510,000
MLS 7002892 Land
20411 County Highway 39
Osage MN 56570