



MLS 7003093 Residential

**\$449,900**

1,288 sq ft  
3 bedrooms  
2 baths

21226 County 18  
Nevis MN 56467

Status: Pending

**Description:**

Welcome to this year-round home on Boulder Lake. Offering 3 bedrooms, 2 bathrooms, and perfectly level lot, walk out to your 200' of lake frontage. You will find a functional layout inside the home with recent upgrades, including a new forced air furnace, walk-in tiled shower, asphalt shingles, and more. The attached two-stall garage is insulated and houses the mechanical components of the home. Outside, you will find a lakeside deck with a power awning for shade, a storage shed for your lake toys, and a 24x32 metal building to park your pontoon. The Dock, Lift, and Pontoon are all included in this sale. Don't miss this beautiful opportunity on Boulder Lake!

**Additional Details:**

Year Built	1988
Lot Acres	1.75
Lot Dimensions	Irregular
Garage Stalls	2
School District	1384
Taxes	\$2,955
Taxes with Assessments	\$3,176
Tax Year	2025

**Additional Features:**

**Fuel:** Array **Heat:** Forced Air

**Driving Directions:**

From 71/34 in Park Rapids: Take 34 East to Dorset Corner and turn Left, follow through Dorset to a right onto County 18. Follow to property on Left.



Listed By:  
Wolff & Simon Real Estate

Affinity Real Estate Inc. participates in the Regional Multiple Listing Service of Minnesota, Inc Broker Reciprocity (sm) program, allowing us to display other broker's listings on our website. All properties are subject to prior sale, change or withdrawal.



**Call Affinity Real Estate**

**218-237-3333**

**info@affinityrealestate.com**



**Affinity Real Estate - 600 Park Avenue South - Park Rapids MN 56470**



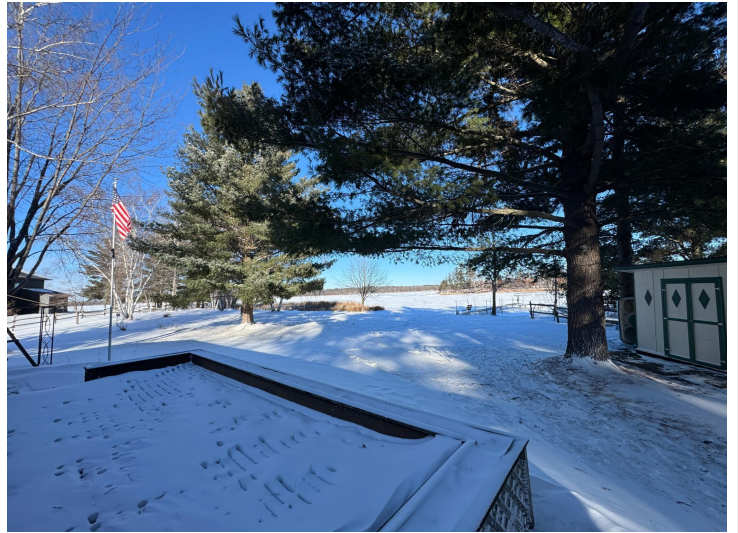


website: [www.AffinityRealEstate.com](http://www.AffinityRealEstate.com) | email: [info@affinityrealestate.com](mailto:info@affinityrealestate.com) | office: 218-237-3333 | fax: 218-237-3377

**Affinity**  
REAL ESTATE INC

**\$449,900**  
MLS 7003093 Residential  
21226 County 18  
Nevis MN 56467





website: [www.AffinityRealEstate.com](http://www.AffinityRealEstate.com) | email: [info@affinityrealestate.com](mailto:info@affinityrealestate.com) | office: 218-237-3333 | fax: 218-237-3377



**\$449,900**  
 MLS 7003093 Residential  
 21226 County 18  
 Nevis MN 56467





website: [www.AffinityRealEstate.com](http://www.AffinityRealEstate.com) | email: [info@affinityrealestate.com](mailto:info@affinityrealestate.com) | office: 218-237-3333 | fax: 218-237-3377

**Affinity**  
REAL ESTATE INC

**\$449,900**  
MLS 7003093 Residential  
21226 County 18  
Nevis MN 56467



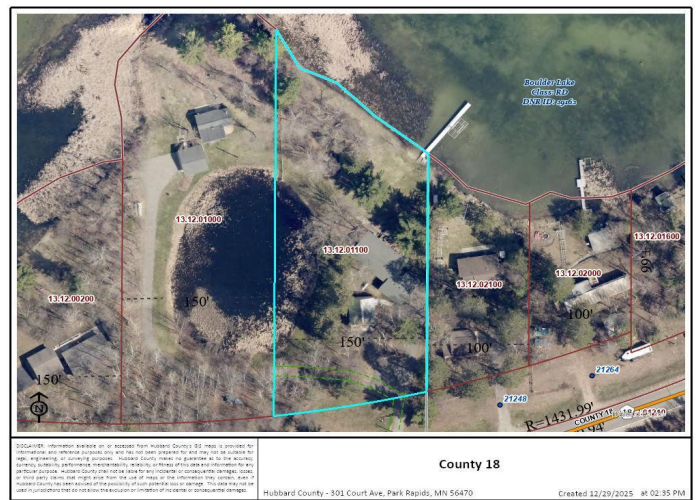


website: [www.AffinityRealEstate.com](http://www.AffinityRealEstate.com) | email: [info@affinityrealestate.com](mailto:info@affinityrealestate.com) | office: 218-237-3333 | fax: 218-237-3377

**Affinity**  
REAL ESTATE INC

**\$449,900**  
MLS 7003093 Residential  
21226 County 18  
Nevis MN 56467





website: [www.AffinityRealEstate.com](http://www.AffinityRealEstate.com) | email: [info@affinityrealestate.com](mailto:info@affinityrealestate.com) | office: 218-237-3333 | fax: 218-237-3377

**Affinity**  
REAL ESTATE INC

**\$449,900**  
MLS 7003093 Residential  
21226 County 18  
Nevis MN 56467