



MLS 7003108 Land

\$99,000

19.31 Acres
Raw Land

XXX Mission Road
Bemidji MN 56601

Status: Active

Description:

Great get away location for a cabin and possible hunting. Remarkable 19+ acres with the Turtle River flowing through the lot. Peaceful!

Additional Details:

Lot Acres	19.31
Lot Dimensions	637x1321x627x1325
School District	1386
Taxes	(unreported)
Taxes with Assessments	(unreported)
Tax Year	2023

Additional Features:

Driving Directions:

County Road 20 to Mission Road NE (South)



Listed By:
Coldwell Banker Realty

Affinity Real Estate Inc. participates in the Regional Multiple Listing Service of Minnesota, Inc Broker Reciprocity (sm) program, allowing us to display other broker's listings on our website. All properties are subject to prior sale, change or withdrawal.



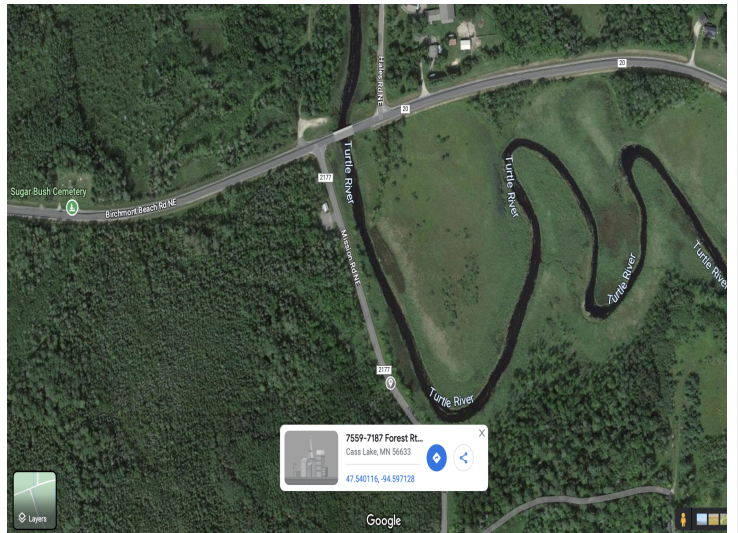
Call Affinity Real Estate

218-237-3333

info@affinityrealestate.com



Affinity Real Estate - 600 Park Avenue South - Park Rapids MN 56470



website: www.AffinityRealEstate.com | email: info@affinityrealestate.com | office: 218-237-3333 | fax: 218-237-3377



\$99,000
 MLS 7003108 Land
 XXX Mission Road
 Bemidji MN 56601