



MLS 7003271 Residential

\$450,000

2,936 sq ft
4 bedrooms
3 baths

13161 Preserve Circle
Baxter MN 56425

Status: Pending

Description:

Experience the ultimate Brainerd Lakes Area lifestyle in this stunning custom home in Baxter's Rush Lake Preserve. Designed for easy living, the main level boasts a chef's kitchen with custom cabinetry and a center island, a primary suite with a private bath, and convenient main-floor laundry. Transition easily to the outdoors with both a covered front porch and a relaxing three-season porch. The lower level adds significant living space with a walkout family room featuring a cozy fireplace, an office, and plenty of storage. With a professional association managing your lawn care and snow shoveling, you can trade your mower and shovel for local adventures. This is a rare opportunity to own a high-quality, "lock-and-leave" home in one of Baxter's most sought-after neighborhoods.

Additional Details:

Year Built	2008
Lot Acres	0.08
Lot Dimensions	50x60
Garage Stalls	2
School District	896
Taxes	\$4,212
Taxes with Assessments	\$4,212
Tax Year	2025

Additional Features:

Fuel: Array **Heat:** Forced Air

Driving Directions:

From the Hwy 371/210 intersection in Baxter - West on Hwy 210 - Left (south) on Highland Scenic Road (stoplights at Baxter School) - Left (east) on Foley Road - Right (south) on Preserve Circle



Listed By:
Edina Realty, Inc.

Affinity Real Estate Inc. participates in the Regional Multiple Listing Service of Minnesota, Inc Broker Reciprocity (sm) program, allowing us to display other broker's listings on our website. All properties are subject to prior sale, change or withdrawal.



Call Affinity Real Estate

218-237-3333

info@affinityrealestate.com



Affinity Real Estate - 600 Park Avenue South - Park Rapids MN 56470



website: www.AffinityRealEstate.com | email: info@affinityrealestate.com | office: 218-237-3333 | fax:218-237-3377



\$450,000
MLS 7003271 Residential
13161 Preserve Circle
Baxter MN 56425



website: www.AffinityRealEstate.com | email: info@affinityrealestate.com | office: 218-237-3333 | fax:218-237-3377

Affinity
REAL ESTATE INC

\$450,000
MLS 7003271 Residential
13161 Preserve Circle
Baxter MN 56425



website: www.AffinityRealEstate.com | email: info@affinityrealestate.com | office: 218-237-3333 | fax: 218-237-3377

Affinity
REAL ESTATE INC

\$450,000
MLS 7003271 Residential
13161 Preserve Circle
Baxter MN 56425



website: www.AffinityRealEstate.com | email: info@affinityrealestate.com | office: 218-237-3333 | fax: 218-237-3377

Affinity
REAL ESTATE INC

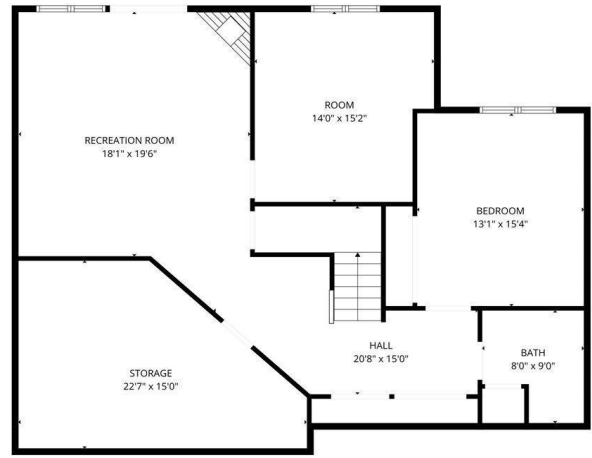
\$450,000
MLS 7003271 Residential
13161 Preserve Circle
Baxter MN 56425



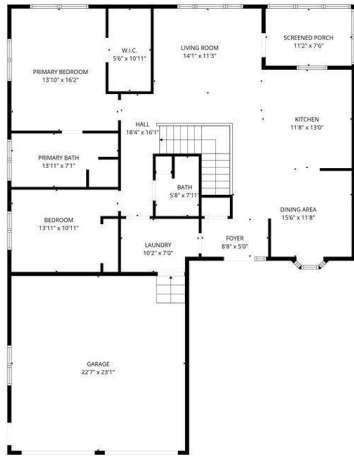
website: www.AffinityRealEstate.com | email: info@affinityrealestate.com | office: 218-237-3333 | fax:218-237-3377



\$450,000
MLS 7003271 Residential
13161 Preserve Circle
Baxter MN 56425



FLOOR PLAN CREATED BY CUBICASA APP. MEASUREMENTS DEEMED HIGHLY RELIABLE BUT NOT GUARANTEED.



FLOOR PLAN CREATED BY CUBICASA APP. MEASUREMENTS DEEMED HIGHLY RELIABLE BUT NOT GUARANTEED.

website: www.AffinityRealEstate.com | email: info@affinityrealestate.com | office: 218-237-3333 | fax: 218-237-3377



\$450,000
 MLS 7003271 Residential
 13161 Preserve Circle
 Baxter MN 56425