

MLS 7003295 Residential

**\$750,000**

3,400 sq ft  
3 bedrooms  
3 baths

TBD Parcel A 165th Street  
Little Falls MN 56345

Status: Active

#### Description:

To-be-built Shouse/Barndominium home located at TBD Parcel A 165th St. Construction anticipated to begin March/April 2026. This thoughtfully designed home has everything you've wanted!

The main level offers an open-concept living and dining area with vaulted ceilings and double doors leading to a patio, creating seamless indoor-outdoor living and showcasing incredible views from every angle. A staircase leads to the second-level loft, which includes bedroom 3 and an open living area, and a full bathroom. The main level includes the primary bedroom with a full walk-through bathroom, an additional bedroom, with generous storage throughout.

A multi-use recreation site between the living area and the shed. This space provides a full kitchen and display area, ideal for entertaining or flexible living space. Off the rec room is a three-quarter bathroom and a utility/laundry room. The open staircase leads to an open loft area, great for hobby enthusiasts or an office. The attached shed/garage includes two oversized garage doors, offering excellent space for vehicles, large motors/RV's, storage, or hobbies. Also, with double doors with a great view leading out!

Situated on 2.65 acres, this property will feature stunning views, a completed Hydro seed yard and driveway prior to sale. Barrier trees planted along the east side of the parcel for added privacy. A rare opportunity to secure a new construction home with acreage, views, and a versatile layout in a peaceful close to Little Falls setting.

Many options available build to suit.

Subject to change and final county approval and recording.

#### Additional Details:

Year Built	2026
Lot Acres	2.65
Lot Dimensions	318x330
Garage Stalls	2
School District	1795
Taxes	\$1
Taxes with Assessments	\$1
Tax Year	2026



Listed By:  
Premier Real Estate Services

Fuel: Array Heat: Forced Air

Affinity Real Estate Inc. participates in the Regional Multiple Listing Service of Minnesota, Inc Broker Reciprocity (sm) program, allowing us to display other broker's listings on our website. All properties are from Little Falls and are available on the web. Go 4.7 miles, turn right on Twin Lakes Road. Go 2 miles, take a left on 165th St. Go 1/4 mile, destination on left. West Lot: Lot A.



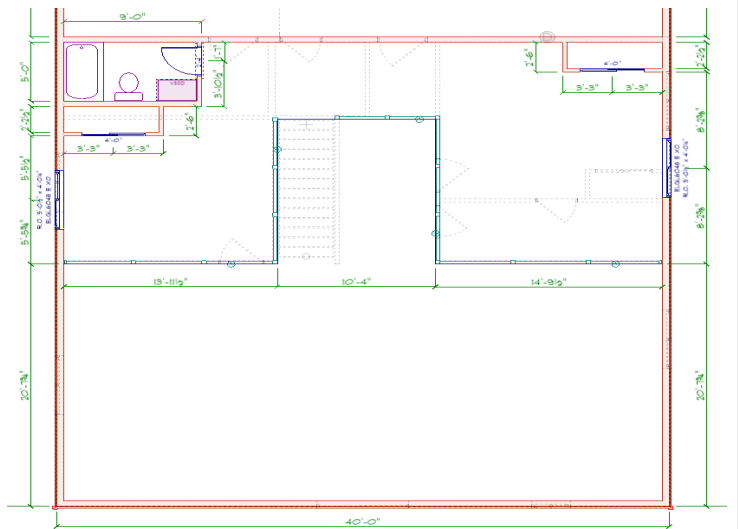
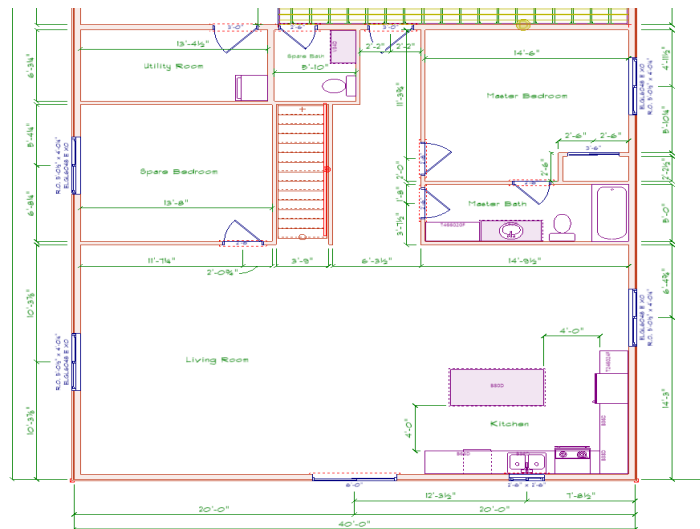
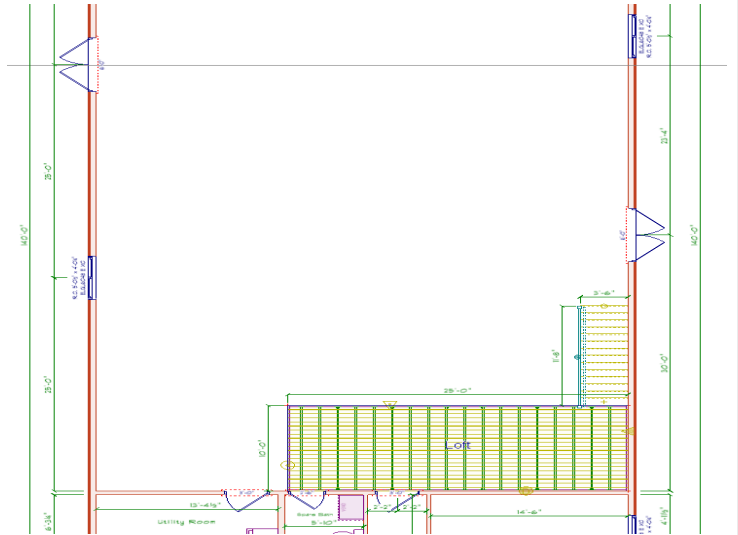
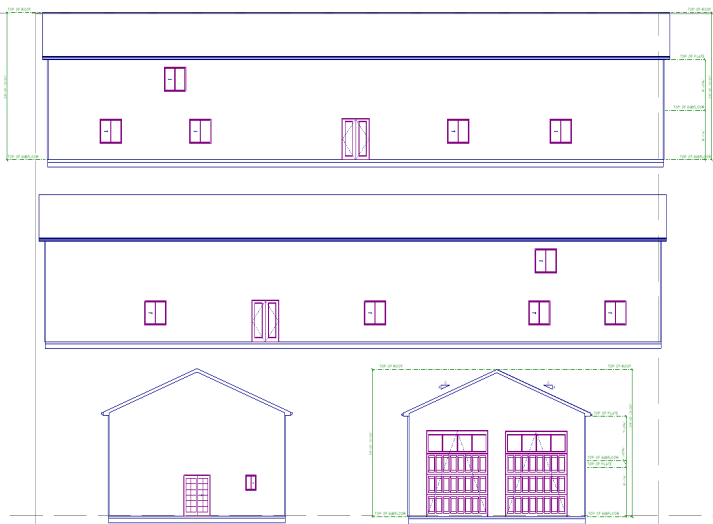
Call Affinity Real Estate

**218-237-3333**

[info@affinityrealestate.com](mailto:info@affinityrealestate.com)



Affinity Real Estate - 600 Park Avenue South - Park Rapids MN 56470



N



S



website: [www.AffinityRealEstate.com](http://www.AffinityRealEstate.com) | email: [info@affinityrealestate.com](mailto:info@affinityrealestate.com) | office: 218-237-3333 | fax: 218-237-3377

**Affinity**  
REAL ESTATE INC

**\$750,000**

MLS 7003295 Residential  
TBD Parcel A 165th Street  
Little Falls MN 56345



website: [www.AffinityRealEstate.com](http://www.AffinityRealEstate.com) | email: [info@affinityrealestate.com](mailto:info@affinityrealestate.com) | office: 218-237-3333 | fax:218-237-3377



**\$750,000**

MLS 7003295 Residential  
TBD Parcel A 165th Street  
Little Falls MN 56345