



MLS 7004185 Residential

**\$354,695**

1,260 sq ft  
2 bedrooms  
2 baths

L1 B3 Cedar Scenic Road  
Baxter MN 56425

Status: Active

#### Description:

Welcome to your New Home in Baxter. Presenting the "Willow," a charming 1-level home designed with convenience and comfort in mind. Say goodbye to stairs with this zero-step 2-bedroom home with a 2-stall garage. Optional 3- stall garage and sunroom, and corner gas fireplace are available all thoughtfully crafted for seamless living on the main floor. At Thomas Allen Homes, we believe that crafting your dream home should be a thrilling and seamless experience. Our commitment is to ensure your journey is not just stress-free but exciting. With a range of choice lots in prime locations, the perfect setting for your new home awaits. There's no need to wait for the right season—secure your spot now and embark on this incredible journey toward owning your new home. Now filling our 2026 slots.

#### Additional Details:

Year Built	2026
Lot Acres	18590
Lot Dimensions	112x160x119x160
Garage Stalls	2
School District	896
Taxes	\$240
Taxes with Assessments	\$240
Tax Year	2025

#### Additional Features:

**Basement:** Crawl Space **Fuel:** Array **Garage:** 2 **Heat:** Forced Air **Sewer:** City Sewer/Connected **Water:** City Water/Connected **Air Conditioning:** Central Air

#### Driving Directions:

210 in Baxter north on Memorywood to west on Cedar Scenic to property on right.



Listed By:  
Edina Realty, Inc.

Affinity Real Estate Inc. participates in the Regional Multiple Listing Service of Minnesota, Inc Broker Reciprocity (sm) program, allowing us to display other broker's listings on our website. All properties are subject to prior sale, change or withdrawal.



Call Affinity Real Estate

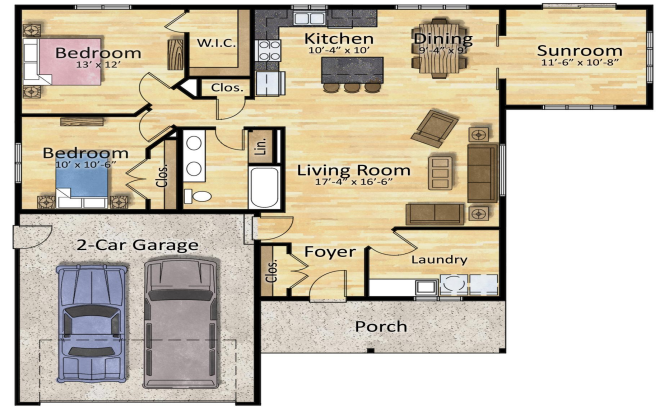
**218-237-3333**

[info@affinityrealestate.com](mailto:info@affinityrealestate.com)



Affinity Real Estate - 600 Park Avenue South - Park Rapids MN 56470



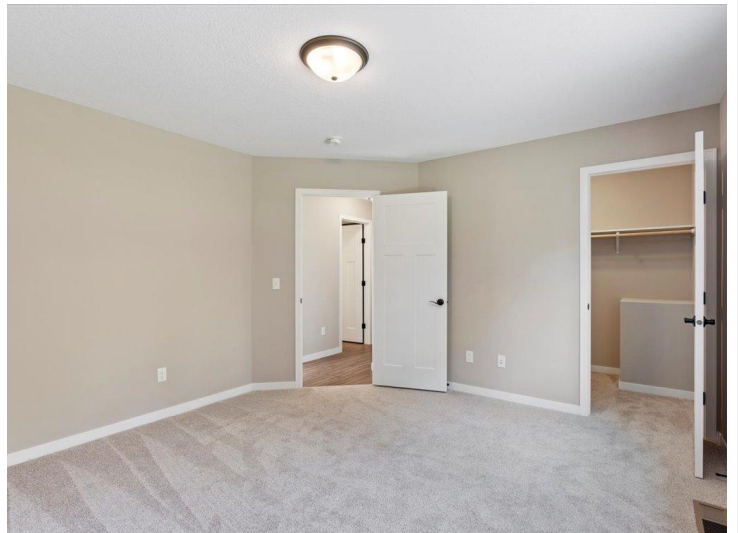


website: [www.AffinityRealEstate.com](http://www.AffinityRealEstate.com) | email: [info@affinityrealestate.com](mailto:info@affinityrealestate.com) | office: 218-237-3333 | fax: 218-237-3377

**Affinity**  
REAL ESTATE INC

**\$354,695**  
MLS 7004185 Residential  
L1 B3 Cedar Scenic Road  
Baxter MN 56425

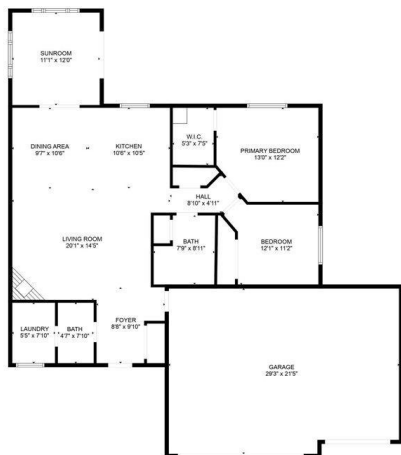




website: [www.AffinityRealEstate.com](http://www.AffinityRealEstate.com) | email: [info@affinityrealestate.com](mailto:info@affinityrealestate.com) | office: 218-237-3333 | fax: 218-237-3377



**\$354,695**  
MLS 7004185 Residential  
L1 B3 Cedar Scenic Road  
Baxter MN 56425



FLOOR PLAN CREATED BY CUBICADA APP. MEASUREMENTS DEEMED HIGHLY RELIABLE BUT NOT GUARANTEED.

website: [www.AffinityRealEstate.com](http://www.AffinityRealEstate.com) | email: [info@affinityrealestate.com](mailto:info@affinityrealestate.com) | office: 218-237-3333 | fax: 218-237-3377

**Affinity**  
REAL ESTATE INC

**\$354,695**  
MLS 7004185 Residential  
L1 B3 Cedar Scenic Road  
Baxter MN 56425