



MLS 7004196 Residential

\$207,000

1,276 sq ft
2 bedrooms
1 baths

24019 County 2
Nevis MN 56467

Status: Active

Description:

This recently updated, single-level home is a standout choice, featuring two spacious bedrooms and one well-appointed bathroom. It's stunning light-colored woodwork paired with sleek sheetrock that creates a modern and inviting atmosphere. You'll love the expansive kitchen, alongside convenient laundry and pantry areas, as well as a roomy living room that boasts a magnificent stone gas-burning fireplace, perfect for cozy gatherings. The property also offers a distinct split-rock exterior and a generous yard, providing ample space for outdoor enjoyment. Just a short walk from Spider Lake and minutes away from the Paul Bunyan State Forest, this location is a haven for recreation enthusiasts, with activities ranging from fishing and hunting to ATV riding. Don't hesitate-this exceptional property just north of Nevis is an opportunity you won't want to miss.

Additional Details:

Year Built	1982
Lot Acres	0.85
Lot Dimensions	156x215x197x210
School District	1380
Taxes	\$1,426
Taxes with Assessments	\$1,426
Tax Year	2025

Additional Features:

Basement: None **Fuel:** Array **Heat:** Baseboard **Sewer:** Tank with Drainage Field **Water:** 4-Inch Submersible **Air Conditioning:** None

Driving Directions:

From 34/71 in Park Rapids, East on 34 to Nevis to a left on County 2 North to property on left.



Listed By:
Wolff & Simon Real Estate

Affinity Real Estate Inc. participates in the Regional Multiple Listing Service of Minnesota, Inc Broker Reciprocity (sm) program, allowing us to display other broker's listings on our website. All properties are subject to prior sale, change or withdrawal.



Call Affinity Real Estate

218-237-3333

info@affinityrealestate.com



Affinity Real Estate - 600 Park Avenue South - Park Rapids MN 56470



website: www.AffinityRealEstate.com | email: info@affinityrealestate.com | office: 218-237-3333 | fax: 218-237-3377



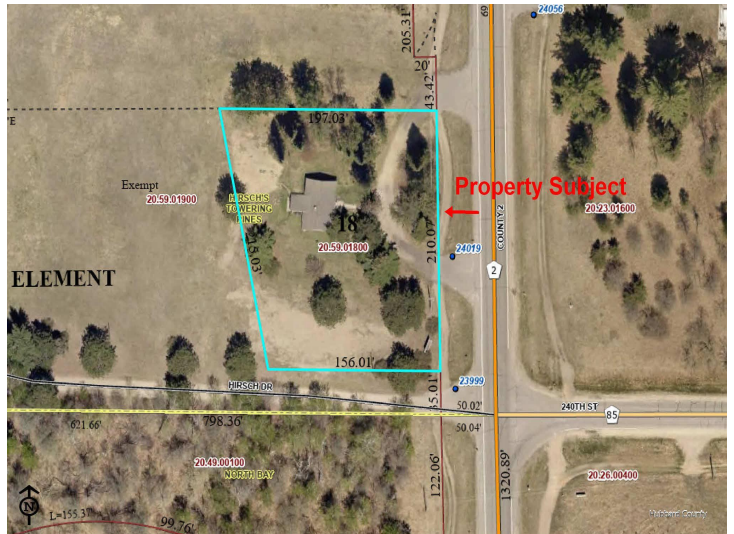
\$207,000
 MLS 7004196 Residential
 24019 County 2
 Nevis MN 56467



website: www.AffinityRealEstate.com | email: info@affinityrealestate.com | office: 218-237-3333 | fax: 218-237-3377

Affinity
REAL ESTATE INC

\$207,000
MLS 7004196 Residential
24019 County 2
Nevis MN 56467



website: www.AffinityRealEstate.com | email: info@affinityrealestate.com | office: 218-237-3333 | fax: 218-237-3377



\$207,000
MLS 7004196 Residential
24019 County 2
Nevis MN 56467