



MLS 7004915 Land

**\$129,900**

0.89 Acres  
Other

15346 Mertens Drive  
Brainerd MN 56401

Status: Pending

**Description:**

Don't miss this rare opportunity to build your dream home in a superb location! Nestled in a private cul-de-sac, this nicely wooded lot offers a peaceful setting just minutes from shopping, restaurants, and everyday conveniences. The property includes a spacious 3-stall garage—perfect for storage or future use during construction. With the lot ready for development, this is a prime chance to create your ideal home in a desirable and well-connected neighborhood.

**Additional Details:**

Lot Acres	0.89
Lot Dimensions	153 x 68 x 159 x 209 x 191
School District	896
Taxes	\$646
Taxes with Assessments	\$646
Tax Year	2024

**Additional Features:**

**Driving Directions:**

From 371 / 210 Intersection - North on Hwy 371 - Right on Woida Rd - Left on Dellwood Dr - Right on Whispering Woods Ln - Left on Mertens Dr to property on the right



Listed By:  
NextHome Horizons

Affinity Real Estate Inc. participates in the Regional Multiple Listing Service of Minnesota, Inc Broker Reciprocity (sm) program, allowing us to display other broker's listings on our website. All properties are subject to prior sale, change or withdrawal.



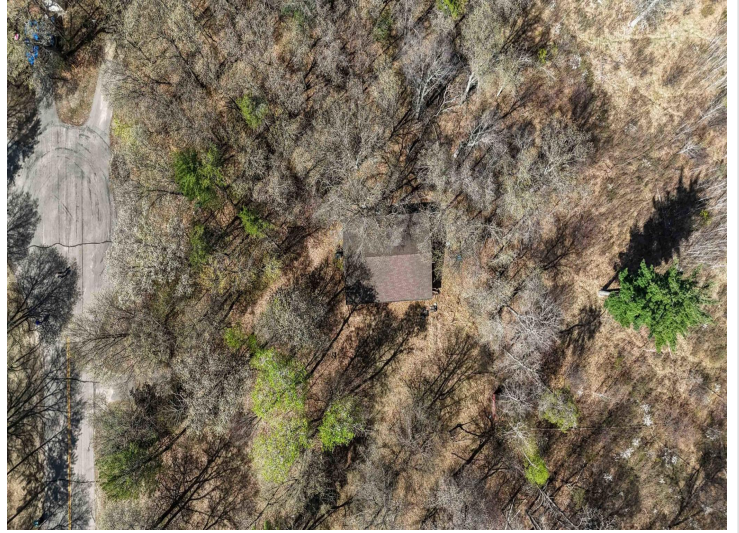
Call Affinity Real Estate

**218-237-3333**

[info@affinityrealestate.com](mailto:info@affinityrealestate.com)



Affinity Real Estate - 600 Park Avenue South - Park Rapids MN 56470



website: [www.AffinityRealEstate.com](http://www.AffinityRealEstate.com) | email: [info@affinityrealestate.com](mailto:info@affinityrealestate.com) | office: 218-237-3333 | fax: 218-237-3377



**\$129,900**  
MLS 7004915 Land  
15346 Mertens Drive  
Brainerd MN 56401



website: [www.AffinityRealEstate.com](http://www.AffinityRealEstate.com) | email: [info@affinityrealestate.com](mailto:info@affinityrealestate.com) | office: 218-237-3333 | fax:218-237-3377



**\$129,900**  
MLS 7004915 Land  
15346 Mertens Drive  
Brainerd MN 56401