



MLS 7004963 Residential

\$154,900

1,608 sq ft
4 bedrooms
2 baths

35 Graceson Avenue
Akeley MN 56433

Status: Active

Description:

Welcome to this beautifully updated 4-bedroom, 2-bath home in Akeley, where comfort meets modern convenience. Enjoy recent enhancements, including new windows, fresh sheetrock, and stylish trim, along with a stunning kitchen and bathroom remodel. The spacious eat-in country kitchen is perfect for family gatherings, while the cozy living room provides a warm and inviting atmosphere. With a bedroom and bath conveniently located on the main level and three additional bedrooms and another bath upstairs, this layout is both practical and accommodating. The maintenance-free siding offers peace of mind, and the attached garage with a lean-to adds extra storage space. Just a short walk from downtown, the Heartland Trail, and 11th Crow Wing Lake, this home is ideally situated for both relaxation and adventure. Don't miss out on the opportunity to make this wonderful home your own!

Additional Details:

Year Built	1900
Lot Acres	0.31
Lot Dimensions	113x165x46x158
Garage Stalls	1
School District	693
Taxes	\$1,156
Taxes with Assessments	\$1,156
Tax Year	2025

Additional Features:

Basement: Concrete **Fuel:** Array **Garage:** 1 **Heat:** Forced Air **Sewer:** City Sewer/Connected **Water:** City Water/Connected **Air Conditioning:** None

Driving Directions:

From 34/71 in Park Rapids, East on 34 to Akeley. Right on Graceson Ave S to property.



Listed By:
Wolff & Simon Real Estate

Affinity Real Estate Inc. participates in the Regional Multiple Listing Service of Minnesota, Inc Broker Reciprocity (sm) program, allowing us to display other broker's listings on our website. All properties are subject to prior sale, change or withdrawal.



Call Affinity Real Estate

218-237-3333

info@affinityrealestate.com



Affinity Real Estate - 600 Park Avenue South - Park Rapids MN 56470



website: www.AffinityRealEstate.com | email: info@affinityrealestate.com | office: 218-237-3333 | fax: 218-237-3377

Affinity
REAL ESTATE INC

\$154,900
MLS 7004963 Residential
35 Graceson Avenue
Akeley MN 56433



website: www.AffinityRealEstate.com | email: info@affinityrealestate.com | office: 218-237-3333 | fax: 218-237-3377

Affinity
REAL ESTATE INC

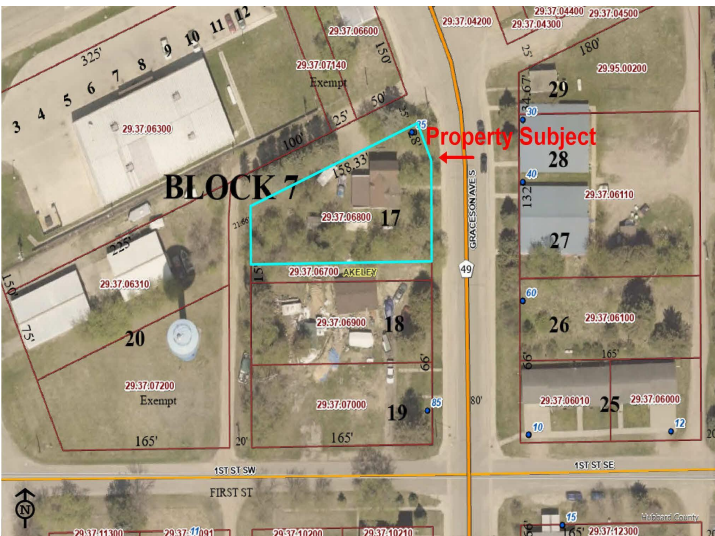
\$154,900
MLS 7004963 Residential
35 Graceson Avenue
Akeley MN 56433



website: www.AffinityRealEstate.com | email: info@affinityrealestate.com | office: 218-237-3333 | fax: 218-237-3377

Affinity
REAL ESTATE INC

\$154,900
MLS 7004963 Residential
35 Graceson Avenue
Akeley MN 56433



website: www.AffinityRealEstate.com | email: info@affinityrealestate.com | office: 218-237-3333 | fax: 218-237-3377



\$154,900
 MLS 7004963 Residential
 35 Graceson Avenue
 Akeley MN 56433