



MLS 7004977 Land

\$96,000

15.1 Acres
Raw Land

Lot K Sandbar Lane
Merrifield MN 56465

Status: Active

Description:

Spacious parcel with natural setting overlooking wetland located on dead end road offering much privacy. Horseshoe Lake just down the road. Build a home, cabin, or storage building to fit your lifestyle. Additional acreage available.

Additional Details:

Lot Acres	15.1
Lot Dimensions	500x1320x500x1320
School District	904
Taxes	\$412
Taxes with Assessments	\$412
Tax Year	2024

Additional Features:

Driving Directions:

South on County Rd 3 at Cty rd 3 and County Rd 11 round about to left on North Horseshoe Lake Rd to just past 13884 N Horseshoe Lake Road or property on left



Listed By:
Dane Arthur Real Estate Agency-Crosslake

Affinity Real Estate Inc. participates in the Regional Multiple Listing Service of Minnesota, Inc Broker Reciprocity (sm) program, allowing us to display other broker's listings on our website. All properties are subject to prior sale, change or withdrawal.



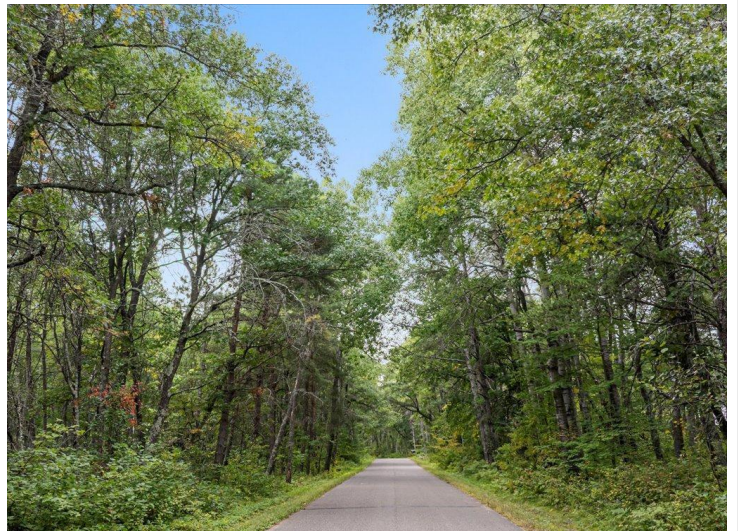
Call Affinity Real Estate

218-237-3333

info@affinityrealestate.com



Affinity Real Estate - 600 Park Avenue South - Park Rapids MN 56470



website: www.AffinityRealEstate.com | email: info@affinityrealestate.com | office: 218-237-3333 | fax: 218-237-3377



\$96,000

MLS 7004977 Land
Lot K Sandbar Lane
Merrifield MN 56465



website: www.AffinityRealEstate.com | email: info@affinityrealestate.com | office: 218-237-3333 | fax:218-237-3377



\$96,000

MLS 7004977 Land
Lot K Sandbar Lane
Merrifield MN 56465