



MLS 7004985 Land

\$149,000

10.3 Acres

Raw Land

Lot H Sandbar Lane

Merrifield MN 56465

Status: Active

Description:

Check out this Wooded building site near Horseshoe and Pelican Lake. A great option for those seeking space and seclusion with this lot. This new lot split is located on private road and abuts Dnr land.

Additional Details:

Lot Acres	10.3
Lot Dimensions	340x1344x331x1344
School District	904
Taxes	\$412
Taxes with Assessments	\$412
Tax Year	2024

Additional Features:

Driving Directions:

South on County Rd 3 at Cty rd 3 and County Rd 11 round about to left on North Horseshoe Lake Rd to just past 13884 N Horseshoe Lake Road or property on left



Listed By:
Dane Arthur Real Estate Agency-Crosslake

Affinity Real Estate Inc. participates in the Regional Multiple Listing Service of Minnesota, Inc Broker Reciprocity (sm) program, allowing us to display other broker's listings on our website. All properties are subject to prior sale, change or withdrawal.



Call Affinity Real Estate

218-237-3333

info@affinityrealestate.com



Affinity Real Estate - 600 Park Avenue South - Park Rapids MN 56470

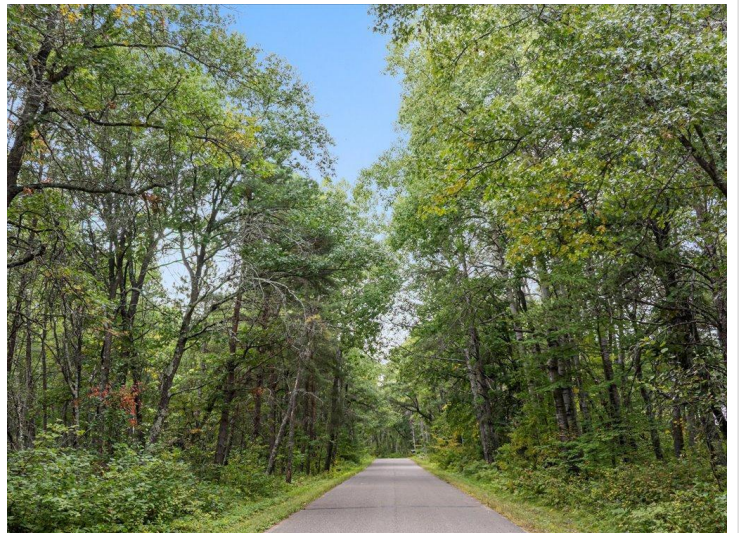


website: www.AffinityRealEstate.com | email: info@affinityrealestate.com | office: 218-237-3333 | fax: 218-237-3377



\$149,000

MLS 7004985 Land
Lot H Sandbar Lane
Merrifield MN 56465



website: www.AffinityRealEstate.com | email: info@affinityrealestate.com | office: 218-237-3333 | fax: 218-237-3377



\$149,000

MLS 7004985 Land
Lot H Sandbar Lane
Merrifield MN 56465



website: www.AffinityRealEstate.com | email: info@affinityrealestate.com | office: 218-237-3333 | fax: 218-237-3377



\$149,000

MLS 7004985 Land
Lot H Sandbar Lane
Merrifield MN 56465