



MLS 7005135 Residential

\$220,000

1,456 sq ft
4 bedrooms
2 baths

25839 122nd Avenue
Elbow Lake MN 56531

Status: Active

Description:

Enjoy small-town living with plenty of space in this beautiful 4-bedroom, 2-bath home set on a generous 2.46-acre lot. The main floor offers a spacious living room, convenient laundry area, a full bath, and a main-floor bedroom—perfect for easy living. Upstairs, you'll find three additional bedrooms and a half bath, providing plenty of room for family or guests.

Step outside to a large deck ideal for relaxing or entertaining during the warmer months. The detached 2-stall garage offers ample space for vehicles, storage, or hobbies. A brand-new mound system was installed in 2024, giving you peace of mind for years to come.

The property adjoins a large city park featuring basketball courts, a baseball field, and a playground—perfect for outdoor fun. Conveniently located just minutes from I-94, you're only a short 27-minute drive from both Alexandria and Fergus Falls.

This property combines comfort, space, and convenience—ready for you to call it home.

Additional Details:

Year Built	1910
Lot Acres	2.46
Lot Dimensions	250x429
Garage Stalls	2
School District	1123
Taxes	\$734
Taxes with Assessments	\$734
Tax Year	2025

Additional Features:

Basement: Daylight/Lookout Windows, Drain Tiled, Partial, Concrete, Storage Space, Sump Pump, Unfinished **Fuel:** Array **Garage:** 2 **Heat:** Forced Air **Sewer:** Mound Septic, Private Sewer, Septic System Compliant - Yes **Water:** Drilled, Private **Air Conditioning:** Central Air

Driving Directions:

From Hwy 79 est. 6.5 miles to 122nd Ave in Erdahl. South on 122nd est. 1.5 blocks to home on right.



Affinity Real Estate Inc. participates in the Regional Multiple Listing Service of Minnesota, Inc Broker Reciprocity (sm) program, allowing us to display other broker's listings on our website. All properties are subject to prior sale, change or withdrawal.



Call Affinity Real Estate

218-237-3333

info@affinityrealestate.com



Affinity Real Estate - 600 Park Avenue South - Park Rapids MN 56470



website: www.AffinityRealEstate.com | email: info@affinityrealestate.com | office: 218-237-3333 | fax: 218-237-3377



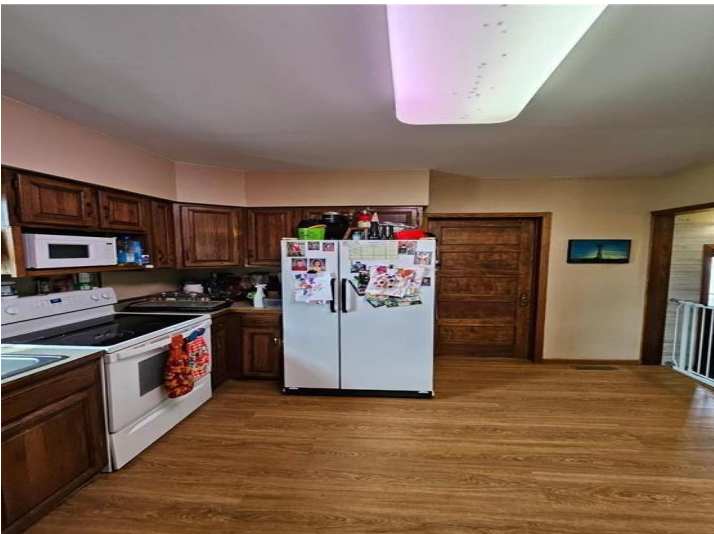
\$220,000
MLS 7005135 Residential
25839 122nd Avenue
Elbow Lake MN 56531



website: www.AffinityRealEstate.com | email: info@affinityrealestate.com | office: 218-237-3333 | fax: 218-237-3377



\$220,000
 MLS 7005135 Residential
 25839 122nd Avenue
 Elbow Lake MN 56531



website: www.AffinityRealEstate.com | email: info@affinityrealestate.com | office: 218-237-3333 | fax: 218-237-3377

Affinity
REAL ESTATE INC

\$220,000
MLS 7005135 Residential
25839 122nd Avenue
Elbow Lake MN 56531



website: www.AffinityRealEstate.com | email: info@affinityrealestate.com | office: 218-237-3333 | fax: 218-237-3377



\$220,000
 MLS 7005135 Residential
 25839 122nd Avenue
 Elbow Lake MN 56531



website: www.AffinityRealEstate.com | email: info@affinityrealestate.com | office: 218-237-3333 | fax: 218-237-3377



\$220,000
MLS 7005135 Residential
25839 122nd Avenue
Elbow Lake MN 56531



website: www.AffinityRealEstate.com | email: info@affinityrealestate.com | office: 218-237-3333 | fax: 218-237-3377



\$220,000
 MLS 7005135 Residential
 25839 122nd Avenue
 Elbow Lake MN 56531