



MLS 7005447 Residential

**\$599,900**

2,624 sq ft  
3 bedrooms  
3 baths

4425 Scotchpine Court  
Bemidji MN 56601

Status: Pending

**Description:**

Discover your private oasis in the heart of the Bemidji area! This beautifully maintained ranch-style home offers effortless one-level living on a secluded 1.55-acre wooded lot, providing the perfect blend of tranquility, space, and modern amenities.

Step inside to find 3 spacious bedrooms, including a luxurious master suite with its own private bath for ultimate relaxation. The home features 2 full bathrooms plus a convenient 3/4 bath, durable LP siding for low-maintenance appeal, and an open layout designed for comfortable everyday living.

The true highlight is the gorgeous bonus room — an entertainer's dream complete with a custom bar and cozy gas fireplace. Ideal for hosting friends, family gatherings, game nights, or quiet evenings by the fire. For the hobbyist or car enthusiast, the impressive 32x40 detached heated garage includes a handy storage loft — plenty of space for vehicles, workshops, toys, and more. Don't miss this rare opportunity — schedule your showing today and make this dream home yours!

**Additional Details:**

Year Built	2011
Lot Acres	1.55
Lot Dimensions	275x352
Garage Stalls	5
School District	1386
Taxes	\$3,986
Taxes with Assessments	\$3,986
Tax Year	2025

**Additional Features:**

**Basement:** None **Fuel:** Array **Garage:** 5 **Heat:** Boiler, Forced Air, Fireplace(s) **Sewer:** Private Sewer **Water:** Well **Air Conditioning:** Central Air

**Driving Directions:**

North on Cty Rd 9 off of HWY 2. Right on Scotchpine go to end of Scotchpine property is on the left.



Listed By:  
Tru North Baudette

Affinity Real Estate Inc. participates in the Regional Multiple Listing Service of Minnesota, Inc Broker Reciprocity (sm) program, allowing us to display other broker's listings on our website. All properties are subject to prior sale, change or withdrawal.



**Call Affinity Real Estate**

**218-237-3333**

**info@affinityrealestate.com**



**Affinity Real Estate - 600 Park Avenue South - Park Rapids MN 56470**



website: [www.AffinityRealEstate.com](http://www.AffinityRealEstate.com) | email: [info@affinityrealestate.com](mailto:info@affinityrealestate.com) | office: 218-237-3333 | fax: 218-237-3377

**Affinity**  
REAL ESTATE INC

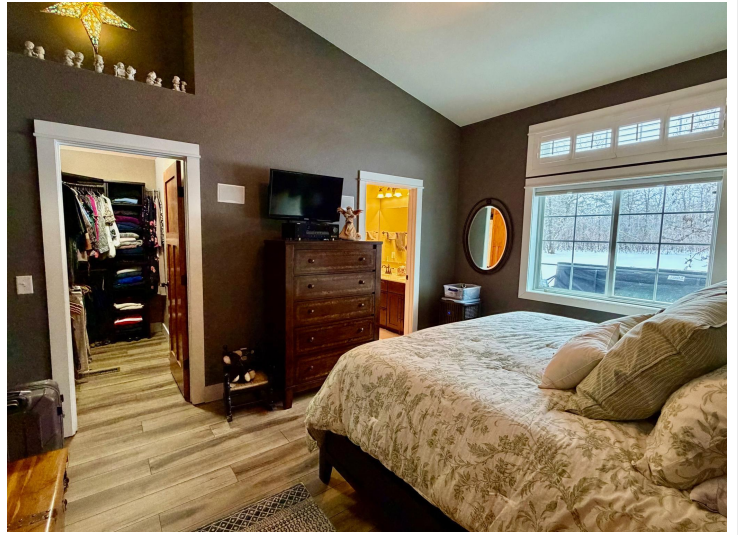
**\$599,900**  
MLS 7005447 Residential  
4425 Scotchpine Court  
Bemidji MN 56601



website: [www.AffinityRealEstate.com](http://www.AffinityRealEstate.com) | email: [info@affinityrealestate.com](mailto:info@affinityrealestate.com) | office: 218-237-3333 | fax: 218-237-3377

**Affinity**  
REAL ESTATE INC

**\$599,900**  
MLS 7005447 Residential  
4425 Scotchpine Court  
Bemidji MN 56601



website: [www.AffinityRealEstate.com](http://www.AffinityRealEstate.com) | email: [info@affinityrealestate.com](mailto:info@affinityrealestate.com) | office: 218-237-3333 | fax: 218-237-3377

**Affinity**  
REAL ESTATE INC

**\$599,900**  
MLS 7005447 Residential  
4425 Scotchpine Court  
Bemidji MN 56601



website: [www.AffinityRealEstate.com](http://www.AffinityRealEstate.com) | email: [info@affinityrealestate.com](mailto:info@affinityrealestate.com) | office: 218-237-3333 | fax: 218-237-3377

**Affinity**  
REAL ESTATE INC

**\$599,900**  
MLS 7005447 Residential  
4425 Scotchpine Court  
Bemidji MN 56601



website: [www.AffinityRealEstate.com](http://www.AffinityRealEstate.com) | email: [info@affinityrealestate.com](mailto:info@affinityrealestate.com) | office: 218-237-3333 | fax: 218-237-3377

**Affinity**  
REAL ESTATE INC

**\$599,900**  
MLS 7005447 Residential  
4425 Scotchpine Court  
Bemidji MN 56601