



MLS 7005859 Residential

\$349,900

2,704 sq ft
4 bedrooms
3 baths

1470 Michigan Avenue
Detroit Lakes MN 56501

Status: Pending

Description:

PRICED UNDER TAX VALUE | MOVE IN READY!!! This beautifully built 2022 twin home offers 4 bedrooms, 3 bathrooms, thoughtfully designed layout and modern finishes throughout. Main floor laundry, primary bedroom w/ensuite, spacious open-concept living area, a stylish kitchen complete with sleek black stainless steel appliances, subway tile, and a walk-in pantry. Tasteful barn doors add character and warmth to the space. The large lower level provides plenty of room for additional living, entertaining, or storage. Additional highlights include an insulated garage, established lawn with clean curb edging accented by river rock, offering low-maintenance appeal and great curb appeal. Conveniently located near Detroit Mountain with views of Detroit Lake from the back windows, this home combines modern style, outdoor charm, and an excellent location. A must-see opportunity—move right in and make it yours!

Additional Details:

Year Built	2022
Lot Acres	0.28
Lot Dimensions	.28AC
Garage Stalls	2
School District	1074
Taxes	\$4,784
Taxes with Assessments	\$4,784
Tax Year	2025

Additional Features:

Basement: Egress Window(s), Finished, Full, Concrete **Fuel:** Array **Garage:** 2 **Heat:** Forced Air **Sewer:** City Sewer - In Street **Water:** City Water - In Street **Air Conditioning:** Central Air

Driving Directions:

North off Hwy 10. Randolph Road to Warnake Road to Michigan Ave.



Listed By:
HomeSmart Adventure Realty

Affinity Real Estate Inc. participates in the Regional Multiple Listing Service of Minnesota, Inc Broker Reciprocity (sm) program, allowing us to display other broker's listings on our website. All properties are subject to prior sale, change or withdrawal.



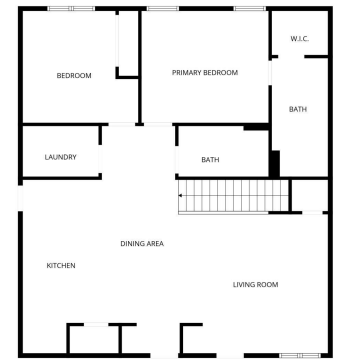
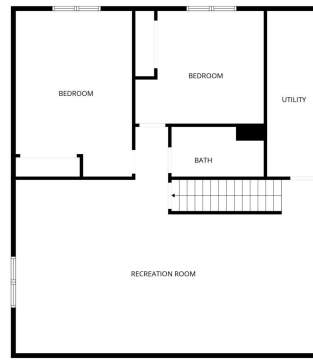
Call Affinity Real Estate

218-237-3333

info@affinityrealestate.com



Affinity Real Estate - 600 Park Avenue South - Park Rapids MN 56470



FLOOR PLAN CREATED BY CURBICASA APP. MEASUREMENTS DEEMED HIGHLY RELIABLE BUT NOT GUARANTEED.



website: www.AffinityRealEstate.com | email: info@affinityrealestate.com | office: 218-237-3333 | fax: 218-237-3377



\$349,900
 MLS 7005859 Residential
 1470 Michigan Avenue
 Detroit Lakes MN 56501



website: www.AffinityRealEstate.com | email: info@affinityrealestate.com | office: 218-237-3333 | fax: 218-237-3377



\$349,900
 MLS 7005859 Residential
 1470 Michigan Avenue
 Detroit Lakes MN 56501



website: www.AffinityRealEstate.com | email: info@affinityrealestate.com | office: 218-237-3333 | fax: 218-237-3377



\$349,900
 MLS 7005859 Residential
 1470 Michigan Avenue
 Detroit Lakes MN 56501



website: www.AffinityRealEstate.com | email: info@affinityrealestate.com | office: 218-237-3333 | fax: 218-237-3377



\$349,900
 MLS 7005859 Residential
 1470 Michigan Avenue
 Detroit Lakes MN 56501



website: www.AffinityRealEstate.com | email: info@affinityrealestate.com | office: 218-237-3333 | fax: 218-237-3377



\$349,900
MLS 7005859 Residential
1470 Michigan Avenue
Detroit Lakes MN 56501



website: www.AffinityRealEstate.com | email: info@affinityrealestate.com | office: 218-237-3333 | fax: 218-237-3377



\$349,900
 MLS 7005859 Residential
 1470 Michigan Avenue
 Detroit Lakes MN 56501