



MLS 7005926 Residential

\$459,900

2,420 sq ft
4 bedrooms
3 baths

9381 Viking Street
Brainerd MN 56401

Status: Active

Description:

Welcome to 9381 Viking Street! An exceptional 2023 Thomas Allen Homes build offering modern design, quality craftsmanship, and upgrades throughout. This newer construction home features a spacious and functional layout highlighted by a large primary suite complete with a walk-in closet for ample storage and comfort.

The kitchen is equipped with stainless steel appliances and is convenient for everyday living and entertaining. Downstairs, the walkout basement provides incredible potential and easy access to the backyard - one of the few walkout lots available in the neighborhood.

Step outside to enjoy the fully fenced, generously sized backyard, perfect for pets, gatherings, or simply relaxing in your own private space. With its newer construction, desirable layout, and rare walkout feature, this home stands out in today's market.

Don't miss your opportunity to own a nearly new home in a great Brainerd location!

Additional Details:

Year Built	2023
Lot Acres	0.7
Lot Dimensions	72x337-110-368
Garage Stalls	3
School District	896
Taxes	\$4,118
Taxes with Assessments	\$4,118
Tax Year	2025

Additional Features:

Basement: Finished, Full, Walkout **Fuel:** Array **Garage:** 3 **Heat:** Forced Air, Fireplace(s) **Sewer:** City Sewer/Connected **Water:** City Water/Connected **Air Conditioning:** Central Air

Driving Directions:

From the Ice Arena on Riverside Dr., Turn left onto Northtown St. and the property is on the right.



Affinity Real Estate Inc. participates in the Regional Multiple Listing Service of Minnesota, Inc Broker Reciprocity (sm) program, allowing us to display other broker's listings on our website. All properties are subject to prior sale, change or withdrawal.



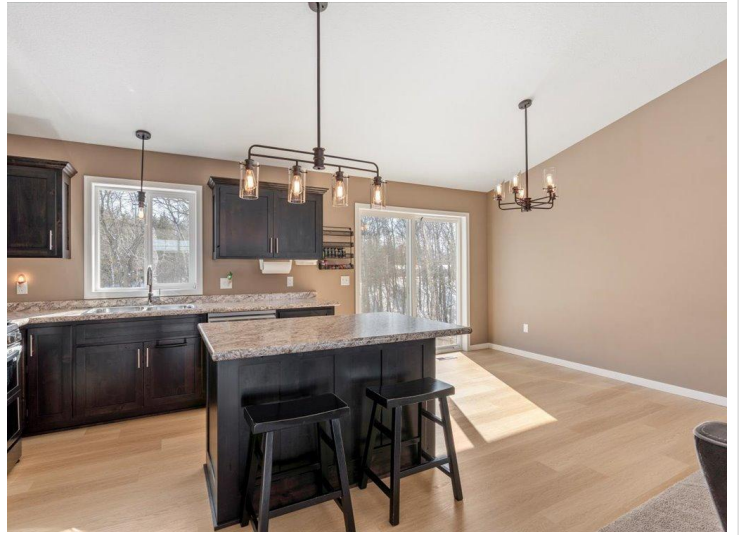
Call Affinity Real Estate

218-237-3333

info@affinityrealestate.com



Affinity Real Estate - 600 Park Avenue South - Park Rapids MN 56470



website: www.AffinityRealEstate.com | email: info@affinityrealestate.com | office: 218-237-3333 | fax: 218-237-3377

Affinity
REAL ESTATE INC

\$459,900
MLS 7005926 Residential
9381 Viking Street
Brainerd MN 56401



website: www.AffinityRealEstate.com | email: info@affinityrealestate.com | office: 218-237-3333 | fax:218-237-3377

Affinity
REAL ESTATE INC

\$459,900
MLS 7005926 Residential
9381 Viking Street
Brainerd MN 56401



website: www.AffinityRealEstate.com | email: info@affinityrealestate.com | office: 218-237-3333 | fax: 218-237-3377

Affinity
REAL ESTATE INC

\$459,900
MLS 7005926 Residential
9381 Viking Street
Brainerd MN 56401



website: www.AffinityRealEstate.com | email: info@affinityrealestate.com | office: 218-237-3333 | fax:218-237-3377



\$459,900
MLS 7005926 Residential
9381 Viking Street
Brainerd MN 56401



website: www.AffinityRealEstate.com | email: info@affinityrealestate.com | office: 218-237-3333 | fax:218-237-3377

Affinity
REAL ESTATE INC

\$459,900
MLS 7005926 Residential
9381 Viking Street
Brainerd MN 56401



website: www.AffinityRealEstate.com | email: info@affinityrealestate.com | office: 218-237-3333 | fax: 218-237-3377

Affinity
REAL ESTATE INC

\$459,900
MLS 7005926 Residential
9381 Viking Street
Brainerd MN 56401



website: www.AffinityRealEstate.com | email: info@affinityrealestate.com | office: 218-237-3333 | fax:218-237-3377



\$459,900
MLS 7005926 Residential
9381 Viking Street
Brainerd MN 56401

website: www.AffinityRealEstate.com | email: info@affinityrealestate.com | office: 218-237-3333 | fax:218-237-3377



\$459,900
MLS 7005926 Residential
9381 Viking Street
Brainerd MN 56401