



MLS 7006103 Lake Home

**\$6,500,000**

6,661 sq ft  
5 bedrooms  
6 baths

37337 Piney Ridge Lane  
Pine River MN 56474

Waterfront: Whitefish Lake  
(18031000)

Status: Active


**Description:**

This Whitefish Chain luxury estate, built by L. Cramer Builders and designed by Charlie & Company Design, LTD, exemplifies luxury. Built as a family retreat to accommodate large groups of friends and family, it offers expansive views while blending rustic elegance with a sophisticated coastal style. The professionally landscaped grounds are bordered by mature pines, and the completely private lot offers 330 feet of frontage, an excellent sandy beach, and a Pickleball Court! The great room boasts a high ceiling with exposed beams, wrought-iron chandeliers, and an eye-catching split-stone fireplace extending from floor to ceiling. Flexible seating arrangements make social gatherings more enjoyable. Enter the kitchen, where culinary ambitions come alive. Picture searing fresh walleye on the Wolf stainless steel gas range while friends unwind nearby, sipping chilled wines from the Sub-Zero refrigerator. There are beautiful wire-brushed hardwood floors throughout that reveal the softer heartwood, complemented by vaulted wood ceilings and wrought-iron lighting. The lakeside den, perfect for relaxing by the fireplace, and the elegant dining room in the great room are designed for entertaining family and friends. The main-floor lakeside primary bedroom suite boasts high-end finishes, walk-in closets, and a spa-like inspired bathroom, offering luxurious comfort with stunning views of Big Whitefish Lake. The walkout lower level includes four additional bedrooms, including a second primary suite, with extra bathrooms that create a spa-like atmosphere. A two-bedroom guest house offers additional sleeping space, ensuring guests leave refreshed. Your guests will wake up to loon calls and end their evenings in a peaceful, restful setting. Wade from the warm sandy shore into the clear water, creating an ideal setting for relaxation and effortless entertaining. The shoreline provides excellent swimming opportunities and a relaxing sand beach. The lakeside fire pit area is perfect for gatherings under the stars, creating an ideal outdoor environment. From sun-drenched days to starry nights, outdoor living is seamlessly integrated into this home.

This estate is close to many Lakes Area amenities—top restaurants, premier golf courses, and scenic hiking and biking trails. Schedule your private tour today and make lasting family memories on Whitefish Lake.

**Additional Details:**

Year Built	2018
Lot Acres	7.61
Lot Dimensions	330x232x125x125x727x344xIRR
Garage Stalls	2
School District	2174



Listed By: \$17,673  
Larson Group Real Estate/Kelle \$17,698

Tax Year: 2026

Affinity Real Estate Inc. participates in the Regional Multiple Listing Service of Minnesota, Inc Broker Reciprocity (sm) program, allowing us to display other broker's listings on our website. All properties are subject to prior sale, change or withdrawal.

**Additional Features:** Fuel, Propane Heat, Forced Air, Fireplace(s), In-Floor Heating



**Call Affinity Real Estate**  
**218-237-3333**  
**info@affinityrealestate.com**



**Affinity Real Estate - 600 Park Avenue South - Park Rapids MN 56470**

**Driving Directions:**

From the intersection of County Road 16 and County Road 66 in Crosslake, take County Road 66 north. Go 3 miles, and turn right onto County Road 1. Go 8.3 miles, and turn left onto County Road 15. Go 1.5 miles, turn left onto Windamere Drive. Go 0.6 miles, then turn right onto Piney Ridge Lane.



website: [www.AffinityRealEstate.com](http://www.AffinityRealEstate.com) | email: [info@affinityrealestate.com](mailto:info@affinityrealestate.com) | office: 218-237-3333 | fax:218-237-3377



**\$6,500,000**  
MLS 7006103 Lake Home  
37337 Piney Ridge Lane  
Pine River MN 56474



website: [www.AffinityRealEstate.com](http://www.AffinityRealEstate.com) | email: [info@affinityrealestate.com](mailto:info@affinityrealestate.com) | office: 218-237-3333 | fax:218-237-3377

**Affinity**  
REAL ESTATE INC

**\$6,500,000**  
MLS 7006103 Lake Home  
37337 Piney Ridge Lane  
Pine River MN 56474



website: [www.AffinityRealEstate.com](http://www.AffinityRealEstate.com) | email: [info@affinityrealestate.com](mailto:info@affinityrealestate.com) | office: 218-237-3333 | fax: 218-237-3377

**Affinity**  
REAL ESTATE INC

**\$6,500,000**  
MLS 7006103 Lake Home  
37337 Piney Ridge Lane  
Pine River MN 56474



website: [www.AffinityRealEstate.com](http://www.AffinityRealEstate.com) | email: [info@affinityrealestate.com](mailto:info@affinityrealestate.com) | office: 218-237-3333 | fax: 218-237-3377

**Affinity**  
REAL ESTATE INC

**\$6,500,000**  
MLS 7006103 Lake Home  
37337 Piney Ridge Lane  
Pine River MN 56474



website: [www.AffinityRealEstate.com](http://www.AffinityRealEstate.com) | email: [info@affinityrealestate.com](mailto:info@affinityrealestate.com) | office: 218-237-3333 | fax:218-237-3377

**Affinity**  
REAL ESTATE INC

**\$6,500,000**  
MLS 7006103 Lake Home  
37337 Piney Ridge Lane  
Pine River MN 56474



website: [www.AffinityRealEstate.com](http://www.AffinityRealEstate.com) | email: [info@affinityrealestate.com](mailto:info@affinityrealestate.com) | office: 218-237-3333 | fax:218-237-3377



**\$6,500,000**  
MLS 7006103 Lake Home  
37337 Piney Ridge Lane  
Pine River MN 56474



website: [www.AffinityRealEstate.com](http://www.AffinityRealEstate.com) | email: [info@affinityrealestate.com](mailto:info@affinityrealestate.com) | office: 218-237-3333 | fax: 218-237-3377

**Affinity**  
REAL ESTATE INC

**\$6,500,000**  
MLS 7006103 Lake Home  
37337 Piney Ridge Lane  
Pine River MN 56474



website: [www.AffinityRealEstate.com](http://www.AffinityRealEstate.com) | email: [info@affinityrealestate.com](mailto:info@affinityrealestate.com) | office: 218-237-3333 | fax:218-237-3377

**Affinity**  
REAL ESTATE INC

**\$6,500,000**  
MLS 7006103 Lake Home  
37337 Piney Ridge Lane  
Pine River MN 56474



website: [www.AffinityRealEstate.com](http://www.AffinityRealEstate.com) | email: [info@affinityrealestate.com](mailto:info@affinityrealestate.com) | office: 218-237-3333 | fax: 218-237-3377

**Affinity**  
REAL ESTATE INC

**\$6,500,000**  
MLS 7006103 Lake Home  
37337 Piney Ridge Lane  
Pine River MN 56474



website: [www.AffinityRealEstate.com](http://www.AffinityRealEstate.com) | email: [info@affinityrealestate.com](mailto:info@affinityrealestate.com) | office: 218-237-3333 | fax:218-237-3377



**\$6,500,000**  
MLS 7006103 Lake Home  
37337 Piney Ridge Lane  
Pine River MN 56474



website: [www.AffinityRealEstate.com](http://www.AffinityRealEstate.com) | email: [info@affinityrealestate.com](mailto:info@affinityrealestate.com) | office: 218-237-3333 | fax:218-237-3377

**Affinity**  
REAL ESTATE INC

**\$6,500,000**  
MLS 7006103 Lake Home  
37337 Piney Ridge Lane  
Pine River MN 56474



website: [www.AffinityRealEstate.com](http://www.AffinityRealEstate.com) | email: [info@affinityrealestate.com](mailto:info@affinityrealestate.com) | office: 218-237-3333 | fax:218-237-3377



**\$6,500,000**  
MLS 7006103 Lake Home  
37337 Piney Ridge Lane  
Pine River MN 56474



website: [www.AffinityRealEstate.com](http://www.AffinityRealEstate.com) | email: [info@affinityrealestate.com](mailto:info@affinityrealestate.com) | office: 218-237-3333 | fax:218-237-3377



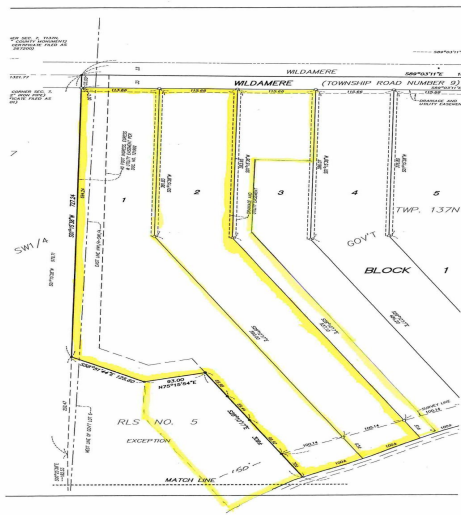
**\$6,500,000**  
MLS 7006103 Lake Home  
37337 Piney Ridge Lane  
Pine River MN 56474



website: [www.AffinityRealEstate.com](http://www.AffinityRealEstate.com) | email: [info@affinityrealestate.com](mailto:info@affinityrealestate.com) | office: 218-237-3333 | fax: 218-237-3377



**\$6,500,000**  
 MLS 7006103 Lake Home  
 37337 Piney Ridge Lane  
 Pine River MN 56474



Floor Plan Created By Cubicasa App. Measurements Deemed Highly Reliable But Not Guaranteed.

website: [www.AffinityRealEstate.com](http://www.AffinityRealEstate.com) | email: [info@affinityrealestate.com](mailto:info@affinityrealestate.com) | office: 218-237-3333 | fax:218-237-3377



**\$6,500,000**  
 MLS 7006103 Lake Home  
 37337 Piney Ridge Lane  
 Pine River MN 56474