



MLS 7006174 Residential

\$234,900

1,836 sq ft
3 bedrooms
2 baths

2717 Beltrami Avenue
Bemidji MN 56601

Status: Active



Description:

Immaculate 3BR/2BA home located in a quiet neighborhood just 1.5 blocks from Cameron Park (access to swimming, fishing & boat launching). Within walking distance to Bemidji State University, restaurants & local amenities. Original authentic hardwood floors that flow beautifully throughout the main level. Two spacious living areas on the main floor, along with a large open kitchen perfect for cooking & entertaining. Finished lower level has a bedroom, 3/4 bath, laundry & large family room (could easily be converted into a fourth bedroom). Concrete driveway & single attached garage. Backyard patio opens into a fenced yard with beautiful pines. Well-maintained property blends charm, function & location—making it a perfect fit for families, students, or anyone looking to enjoy the heart of Bemidji.

Additional Details:

Year Built	1946
Lot Acres	0.184
Lot Dimensions	55x140
Garage Stalls	1
School District	1386
Taxes	\$2,210
Taxes with Assessments	\$2,210
Tax Year	2025

Additional Features:

Basement: Egress Window(s), Finished, Full, Concrete **Fuel:** Array **Garage:** 1 **Heat:** Forced Air **Sewer:** City Sewer/Connected **Water:** City Water/Connected **Air Conditioning:** None

Driving Directions:

North on Irvine Ave, right on 26th St, left on Beltrami Ave.



Listed By:
Century 21 Dickinson

Affinity Real Estate Inc. participates in the Regional Multiple Listing Service of Minnesota, Inc Broker Reciprocity (sm) program, allowing us to display other broker's listings on our website. All properties are subject to prior sale, change or withdrawal.



Call Affinity Real Estate

218-237-3333

info@affinityrealestate.com



Affinity Real Estate - 600 Park Avenue South - Park Rapids MN 56470



website: www.AffinityRealEstate.com | email: info@affinityrealestate.com | office: 218-237-3333 | fax: 218-237-3377

Affinity
REAL ESTATE INC

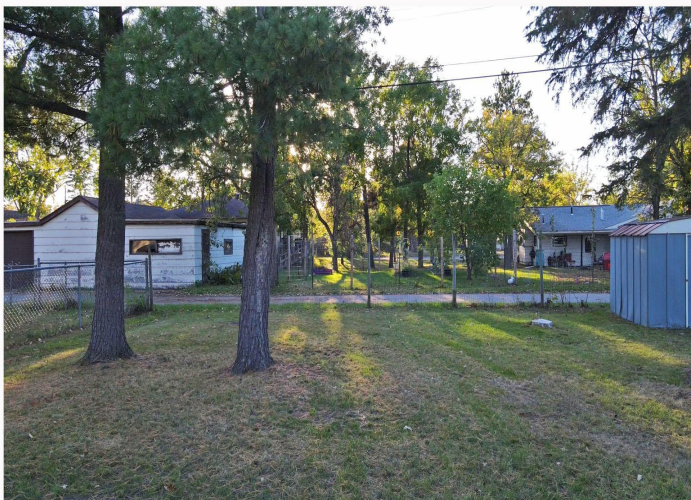
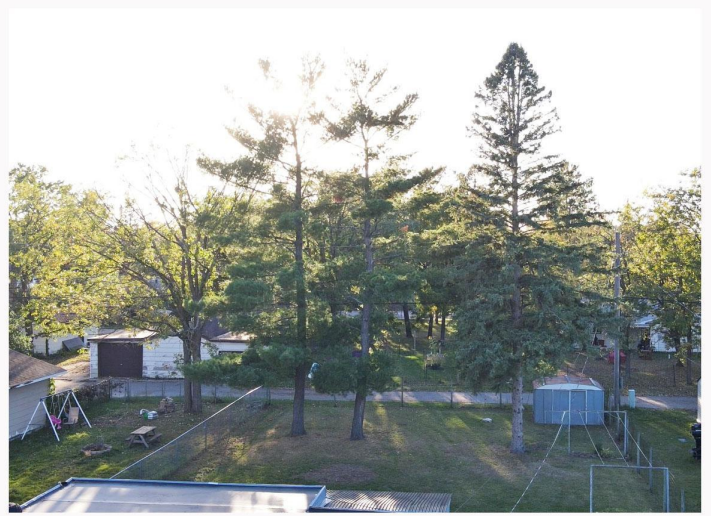
\$234,900
MLS 7006174 Residential
2717 Beltrami Avenue
Bemidji MN 56601



website: www.AffinityRealEstate.com | email: info@affinityrealestate.com | office: 218-237-3333 | fax: 218-237-3377



\$234,900
MLS 7006174 Residential
2717 Beltrami Avenue
Bemidji MN 56601



website: www.AffinityRealEstate.com | email: info@affinityrealestate.com | office: 218-237-3333 | fax: 218-237-3377



\$234,900
 MLS 7006174 Residential
 2717 Beltrami Avenue
 Bemidji MN 56601