



MLS 7006462 Residential

\$599,000

2,436 sq ft
4 bedrooms
3 baths

21530 County Road 117
Osage MN 56570

Status: Pending

Description:

Beautifully maintained 4-bedroom, 3-bathroom lakefront home, situated on a rare level lot with panoramic lake views. This thoughtfully designed home features spacious bedrooms all on one level, offering both comfort and convenience. Open concept living room and with breathtaking lake views from every corner. Big center island in kitchen with walk-in pantry as well as custom oak cabinetry and custom oak mill work throughout house with 6 panel doors. There is also no shortage of storage in this house. Enjoy year-round comfort with in-floor heating throughout the main floor as well as garage. Pride in ownership is evident throughout, with the home being exceptionally cared for. An ideal lake property combining functionality, comfort, and breathtaking views.

Additional Details:

Year Built	2010
Lot Acres	0.49
Lot Dimensions	117x200x200x105
Garage Stalls	2
School District	1106
Taxes	\$3,012
Taxes with Assessments	\$3,072
Tax Year	2025

Additional Features:

Fuel: Array **Heat:** Forced Air, Heat Pump, In-Floor Heating

Driving Directions:

Starting from Detroit Lakes turn right onto MN 34-E/N. Go 18 miles and turn right onto Co Rd 117. Turn left onto Co Rd 117 and house will be on your right into 3 blocks.



Listed By:
Jack Chivers Realty

Affinity Real Estate Inc. participates in the Regional Multiple Listing Service of Minnesota, Inc Broker Reciprocity (sm) program, allowing us to display other broker's listings on our website. All properties are subject to prior sale, change or withdrawal.



Call Affinity Real Estate

218-237-3333

info@affinityrealestate.com



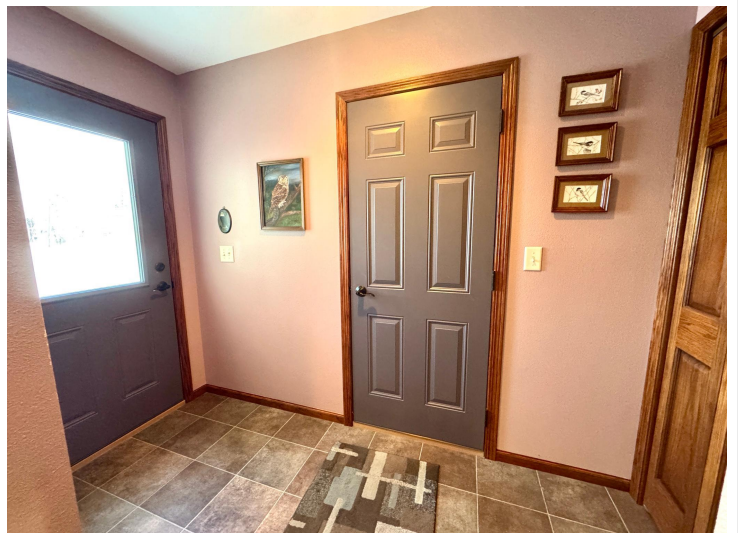
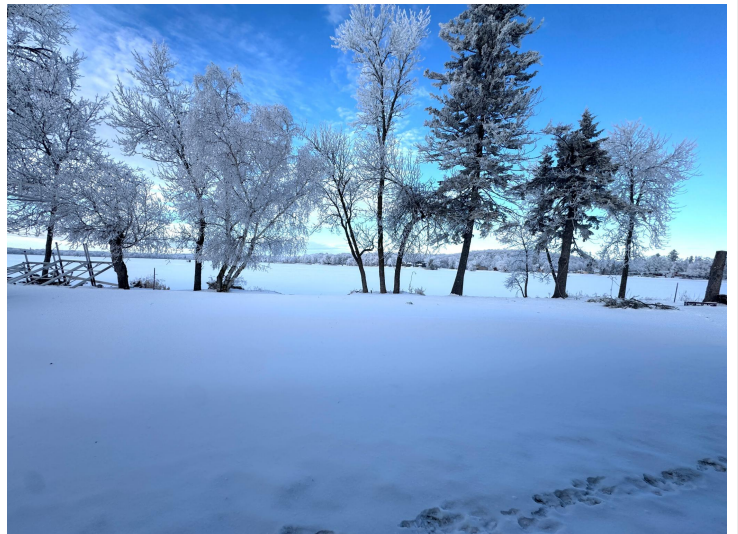
Affinity Real Estate - 600 Park Avenue South - Park Rapids MN 56470



website: www.AffinityRealEstate.com | email: info@affinityrealestate.com | office: 218-237-3333 | fax: 218-237-3377

Affinity
REAL ESTATE INC

\$599,000
MLS 7006462 Residential
21530 County Road 117
Osage MN 56570



website: www.AffinityRealEstate.com | email: info@affinityrealestate.com | office: 218-237-3333 | fax: 218-237-3377



\$599,000
 MLS 7006462 Residential
 21530 County Road 117
 Osage MN 56570



website: www.AffinityRealEstate.com | email: info@affinityrealestate.com | office: 218-237-3333 | fax: 218-237-3377

Affinity
REAL ESTATE INC

\$599,000
MLS 7006462 Residential
21530 County Road 117
Osage MN 56570



website: www.AffinityRealEstate.com | email: info@affinityrealestate.com | office: 218-237-3333 | fax: 218-237-3377



\$599,000
MLS 7006462 Residential
21530 County Road 117
Osage MN 56570



website: www.AffinityRealEstate.com | email: info@affinityrealestate.com | office: 218-237-3333 | fax: 218-237-3377

Affinity
REAL ESTATE INC

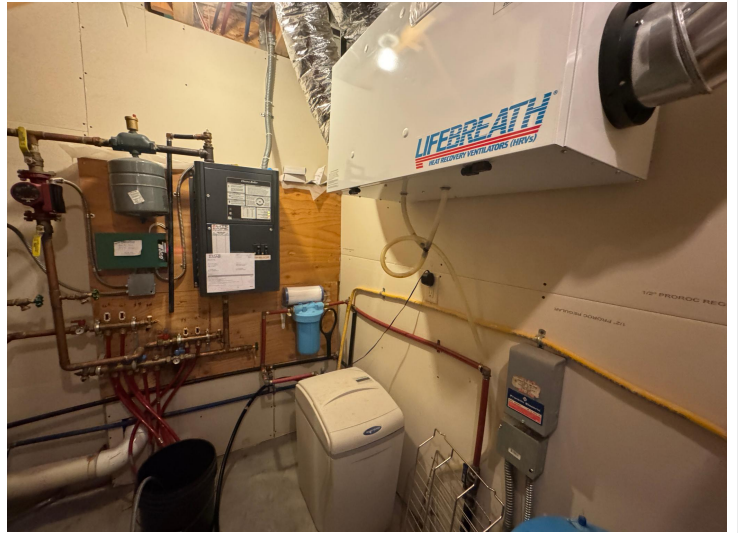
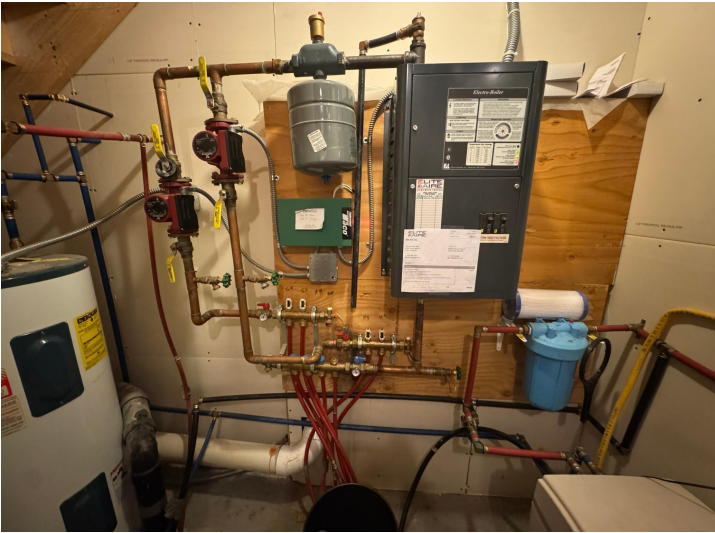
\$599,000
MLS 7006462 Residential
21530 County Road 117
Osage MN 56570



website: www.AffinityRealEstate.com | email: info@affinityrealestate.com | office: 218-237-3333 | fax: 218-237-3377

Affinity
REAL ESTATE INC

\$599,000
MLS 7006462 Residential
21530 County Road 117
Osage MN 56570



website: www.AffinityRealEstate.com | email: info@affinityrealestate.com | office: 218-237-3333 | fax: 218-237-3377

Affinity
REAL ESTATE INC

\$599,000
MLS 7006462 Residential
21530 County Road 117
Osage MN 56570



website: www.AffinityRealEstate.com | email: info@affinityrealestate.com | office: 218-237-3333 | fax: 218-237-3377

Affinity
REAL ESTATE INC

\$599,000
MLS 7006462 Residential
21530 County Road 117
Osage MN 56570