



MLS 7006708 Residential

\$579,000

2,195 sq ft
2 bedrooms
3 baths

20517 Woodland Heights Drive
Grand Rapids MN 55744

Status: Active

Description:

Capturing the Up North lifestyle with modern flair, this custom built barndominium hosts 2+ bedrooms, 3 bathrooms— all tucked away on a secluded 2.5 acre wooded lot just a stone's throw from Pokegama Lake. Surrounded by mature trees, the property provides seclusion and a true northwoods feel — whether you're relaxing on the new stamped concrete patio area or planning your next lake day. The main floor features a new entry way/mudroom, open concept kitchen and dining room, and laundry room in addition to the tranquil primary suite with attached bath. You'll appreciate the upper level, including a second bedroom, generous bonus room, and family room/flex space — perfect for family movie nights or entertaining. Additional features include a finished loft area in the garage for added storage, modern finishes with rustic touches throughout, spacious living areas, and plenty of room to expand or customize. This home is made for those who crave connection to the outdoors without giving up location and efficiency of new construction.

Additional Details:

Year Built	2023
Lot Acres	2.5
Lot Dimensions	Irregular
Garage Stalls	2
School District	1410
Taxes	\$3,613
Taxes with Assessments	\$3,694
Tax Year	2025

Additional Features:

Basement: None **Fuel:** Array **Garage:** 2 **Heat:** In-Floor Heating **Sewer:** Septic System Compliant - Yes **Water:** Private **Air Conditioning:** Central Air

Driving Directions:

Hwy 169 S to R on Woodland Heights Drive to property on R



Listed By:
COLDWELL BANKER NORTHWOODS

Affinity Real Estate Inc. participates in the Regional Multiple Listing Service of Minnesota, Inc Broker Reciprocity (sm) program, allowing us to display other broker's listings on our website. All properties are subject to prior sale, change or withdrawal.



Call Affinity Real Estate

218-237-3333

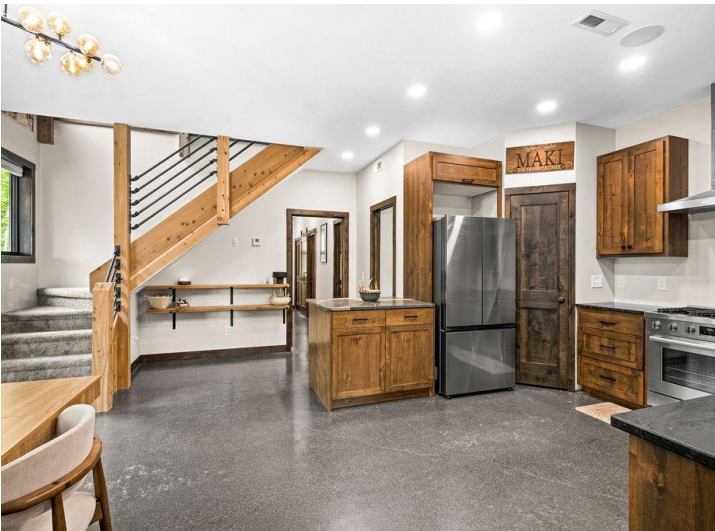
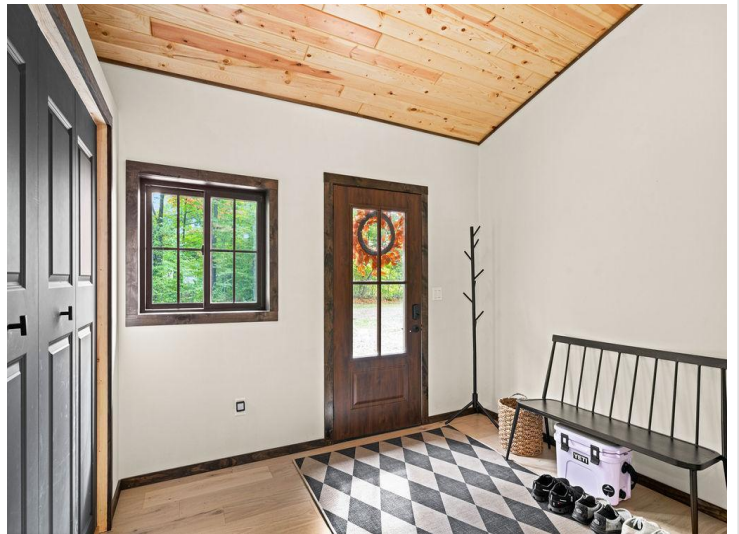
info@affinityrealestate.com



Affinity Real Estate - 600 Park Avenue South - Park Rapids MN 56470



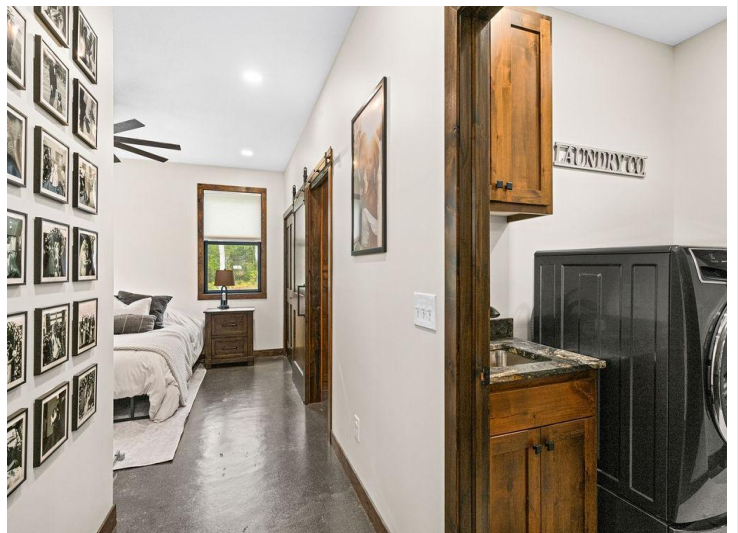
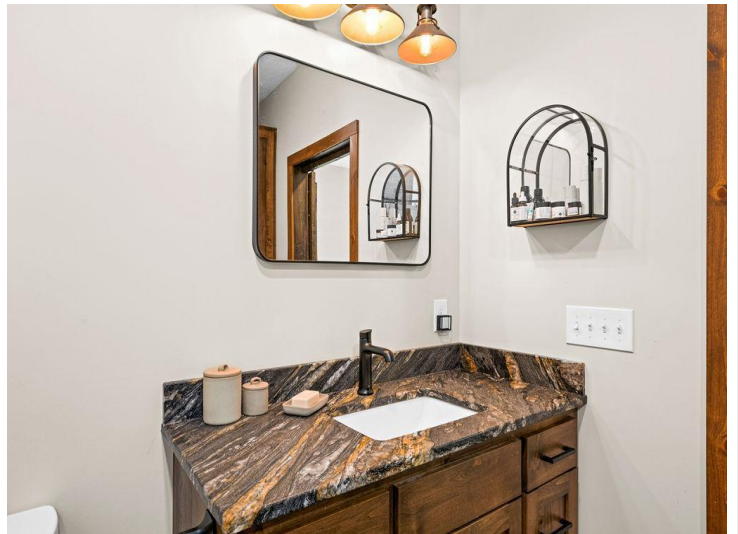
PROPERTY LINES ESTIMATED



website: www.AffinityRealEstate.com | email: info@affinityrealestate.com | office: 218-237-3333 | fax: 218-237-3377

Affinity
REAL ESTATE INC

\$579,000
MLS 7006708 Residential
20517 Woodland Heights
Drive
Grand Rapids MN 55744



website: www.AffinityRealEstate.com | email: info@affinityrealestate.com | office: 218-237-3333 | fax: 218-237-3377



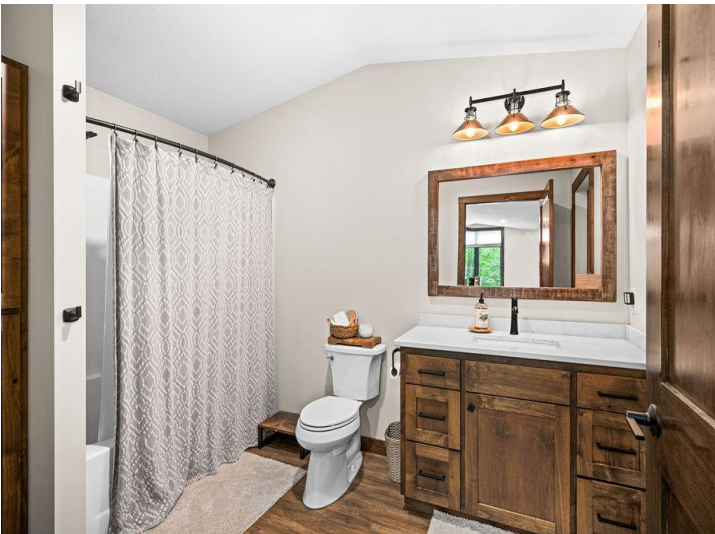
\$579,000
MLS 7006708 Residential
20517 Woodland Heights
Drive
Grand Rapids MN 55744



website: www.AffinityRealEstate.com | email: info@affinityrealestate.com | office: 218-237-3333 | fax: 218-237-3377



\$579,000
 MLS 7006708 Residential
 20517 Woodland Heights
 Drive
 Grand Rapids MN 55744



website: www.AffinityRealEstate.com | email: info@affinityrealestate.com | office: 218-237-3333 | fax: 218-237-3377



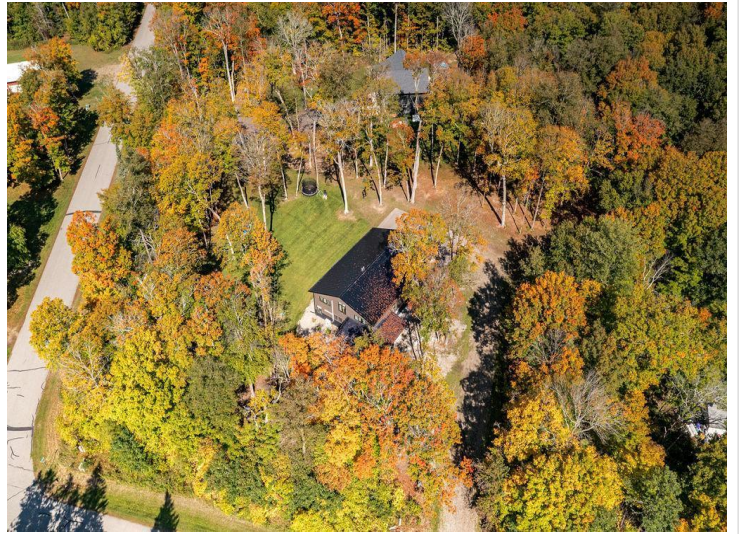
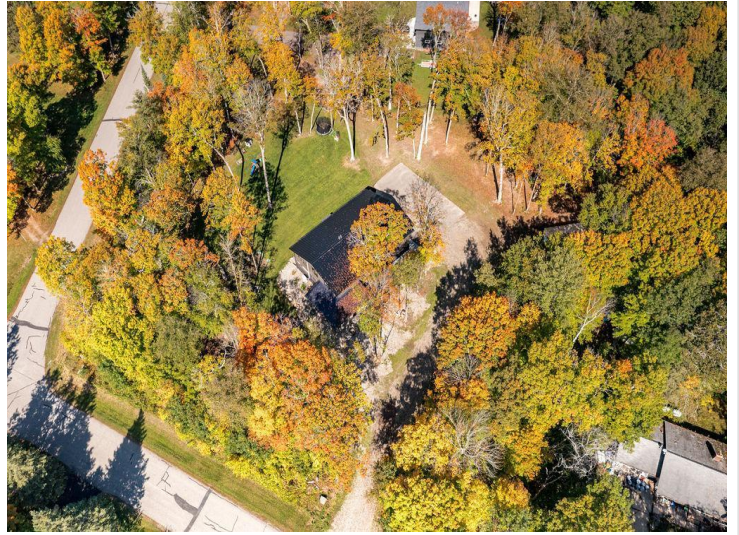
\$579,000
MLS 7006708 Residential
20517 Woodland Heights
Drive
Grand Rapids MN 55744



website: www.AffinityRealEstate.com | email: info@affinityrealestate.com | office: 218-237-3333 | fax: 218-237-3377



\$579,000
 MLS 7006708 Residential
 20517 Woodland Heights
 Drive
 Grand Rapids MN 55744



website: www.AffinityRealEstate.com | email: info@affinityrealestate.com | office: 218-237-3333 | fax: 218-237-3377



\$579,000
MLS 7006708 Residential
20517 Woodland Heights
Drive
Grand Rapids MN 55744



website: www.AffinityRealEstate.com | email: info@affinityrealestate.com | office: 218-237-3333 | fax: 218-237-3377



\$579,000
MLS 7006708 Residential
20517 Woodland Heights
Drive
Grand Rapids MN 55744