



MLS 7007051 Land

\$499,000

14.67 Acres
Raw Land

Parcel A Hwy 371
Brainerd MN 56401

Status: Active

Description:

Locate along the busy Hwy 371 corridor and benefit from the high visibility and excellent exposure. Prime commercial acreage available to develop. Ideal site for retail, outdoor display or office-service.

Additional Details:

Lot Acres	14.67
Lot Dimensions	976.94' x 133.89' x 1,257.43' x 400.03' x 635.06'
School District	896
Taxes	\$1,690
Taxes with Assessments	\$1,690
Tax Year	2025

Additional Features:

Driving Directions:

From the Baxter Hwy 371 / Hwy 210 stoplight intersection - North on Hwy 371 approx. 3 miles to Barbeau Road - Property is directly South of Barbeau Road, along Hwy 371



Listed By:
Close-Converse Commercial Prop

Affinity Real Estate Inc. participates in the Regional Multiple Listing Service of Minnesota, Inc Broker Reciprocity (sm) program, allowing us to display other broker's listings on our website. All properties are subject to prior sale, change or withdrawal.



Call Affinity Real Estate

218-237-3333

info@affinityrealestate.com



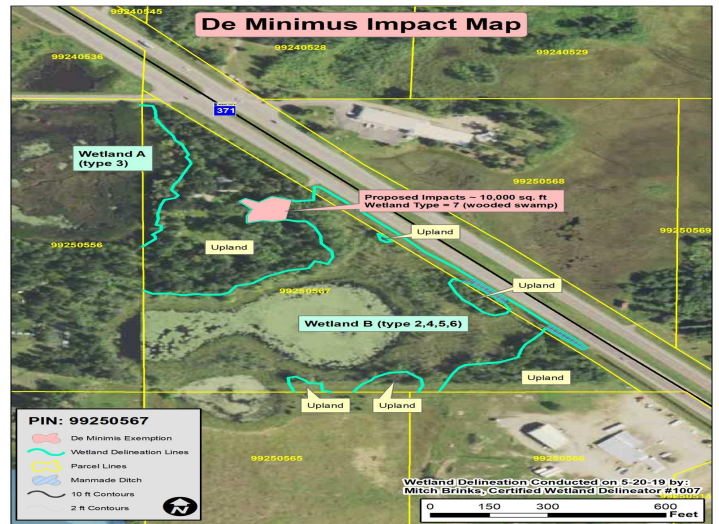
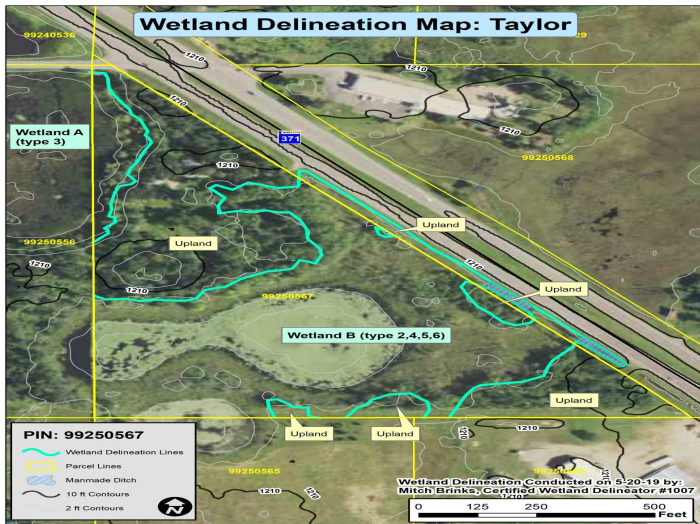
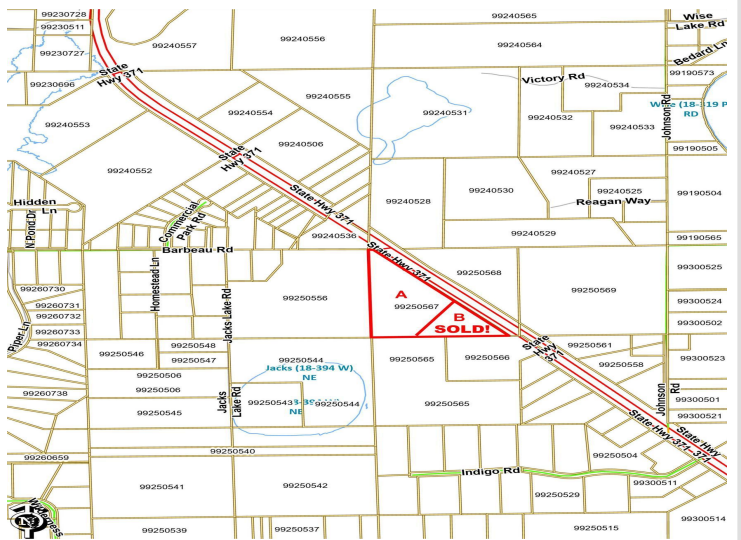
Affinity Real Estate - 600 Park Avenue South - Park Rapids MN 56470



website: www.AffinityRealEstate.com | email: info@affinityrealestate.com | office: 218-237-3333 | fax: 218-237-3377



\$499,000
 MLS 7007051 Land
 Parcel A Hwy 371
 Brainerd MN 56401



website: www.AffinityRealEstate.com | email: info@affinityrealestate.com | office: 218-237-3333 | fax: 218-237-3377



\$499,000
 MLS 7007051 Land
 Parcel A Hwy 371
 Brainerd MN 56401