

MLS 7007058 Land

\$649,000

3 Acres
Raw Land

3AC Liberty Lane
Brainerd MN 56401

Status: Active

Description:

Excellent opportunity to locate along the growing Hwy 25 / Hwy 18 intersection in Brainerd. Prime highway frontage and high traffic counts would benefit a commercial retailer, office-service business or industrial operator. Build new and move or expand your business to this 3 acre pad site (Subject to Platting). Additional 19 acres available. Close to schools, churches, shopping, dining, entertainment and recreation.


Additional Details:

Lot Acres	3
Lot Dimensions	250x523
School District	896
Taxes	(unreported)
Taxes with Assessments	(unreported)
Tax Year	2025

Additional Features:

Driving Directions:

From Hwy 210 (Washington Street) / Hwy 371 (S 6th Street) intersection in Brainerd - East on Washington Street - East on Hwy 25 - East on Liberty Lane - Property is on the South



Listed By:
Close-Converse Commercial Prop

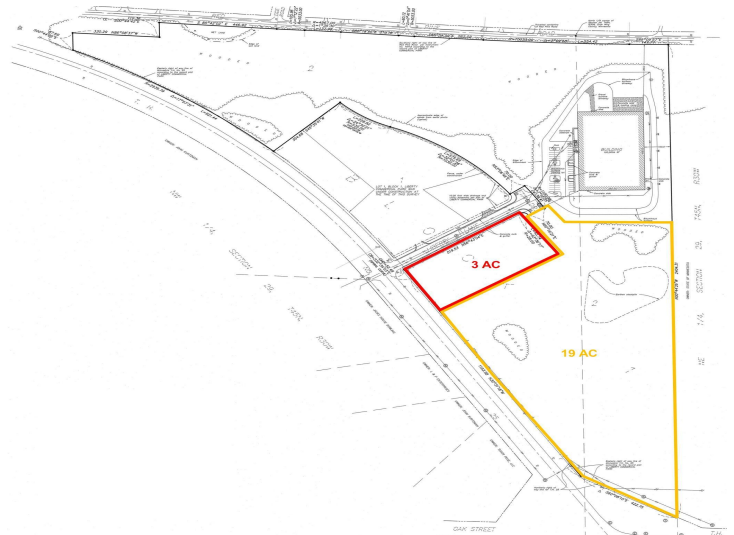
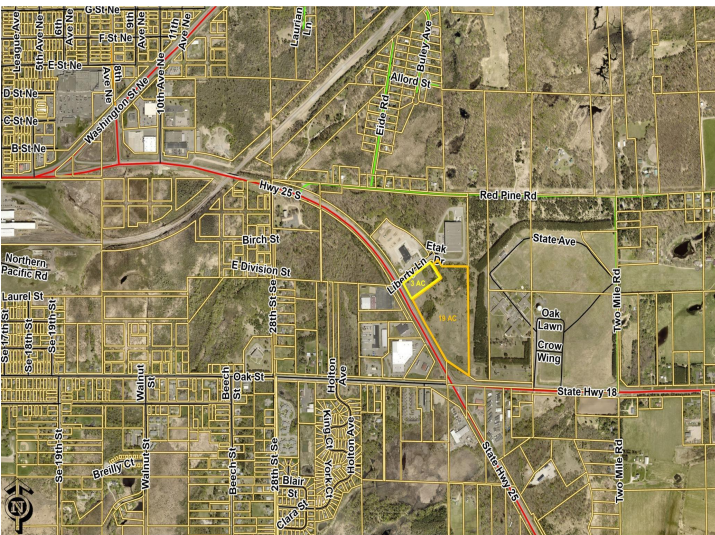
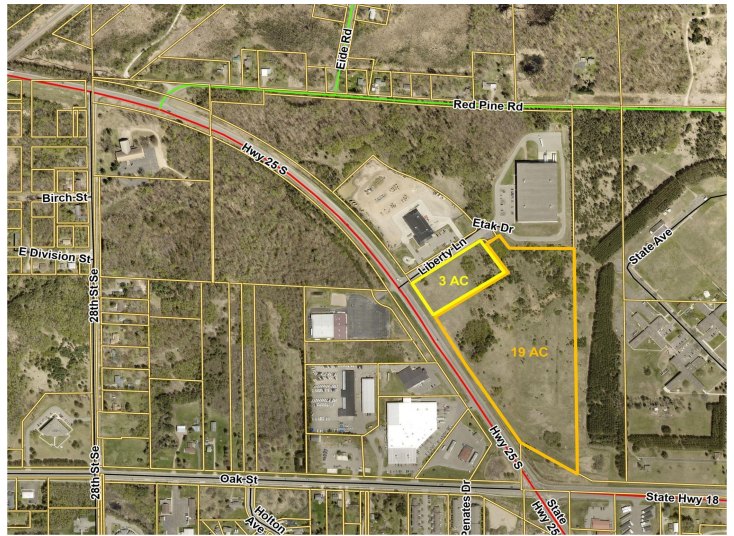
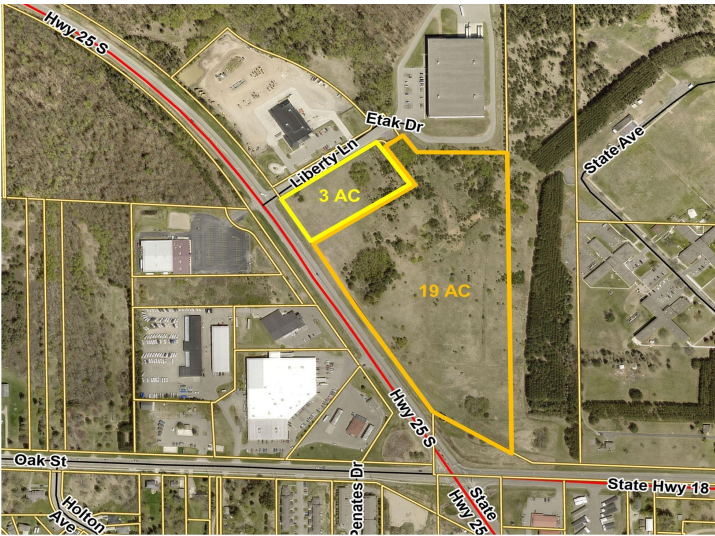
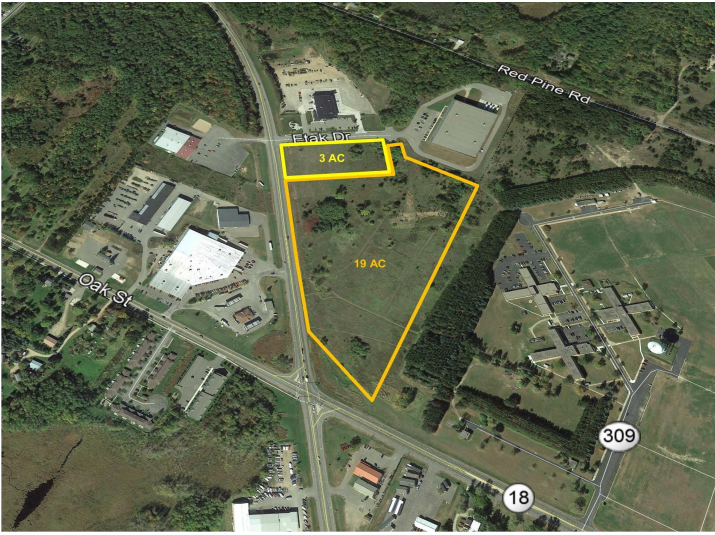
Affinity Real Estate Inc. participates in the Regional Multiple Listing Service of Minnesota, Inc Broker Reciprocity (sm) program, allowing us to display other broker's listings on our website. All properties are subject to prior sale, change or withdrawal.



Call Affinity Real Estate
218-237-3333
info@affinityrealestate.com



Affinity Real Estate - 600 Park Avenue South - Park Rapids MN 56470



website: www.AffinityRealEstate.com | email: info@affinityrealestate.com | office: 218-237-3333 | fax: 218-237-3377



\$649,000
 MLS 7007058 Land
 3AC Liberty Lane
 Brainerd MN 56401



website: www.AffinityRealEstate.com | email: info@affinityrealestate.com | office: 218-237-3333 | fax: 218-237-3377



\$649,000
 MLS 7007058 Land
 3AC Liberty Lane
 Brainerd MN 56401