



MLS 7007216 Residential

\$165,000

1,200 sq ft
2 bedrooms
1 baths

3284 County Road 144
Waubun MN 56589

Status: Active

Description:

Set on 4.96 acres, more or less, this property offers a peaceful outdoor escape featuring a custom-built log cabin surrounded by natural beauty and privacy. Designed for those who enjoy the outdoors without the maintenance of traditional waterfront, the property includes creek frontage ideal for ricing, fishing, and quiet nature enjoyment. The cabin offers approximately 1,200 sq ft, 2 bedrooms, and 1 bathroom, with well water, septic, and a wood-burning stove, making it suitable for year-round or seasonal use. The setting is well suited for a recreational retreat while also offering ample space to build a future dream home, with the existing cabin easily serving as a guesthouse or short-term rental.

Additional Details:

Year Built	2007
Lot Acres	4.96
Lot Dimensions	Irregular
School District	1697
Taxes	\$2,338
Taxes with Assessments	\$2,412
Tax Year	2025

Additional Features:

Basement: Crawl Space **Fuel:** Array **Heat:** Baseboard, Wood Stove **Sewer:** Holding Tank, Private Sewer **Water:** Private, Well **Air Conditioning:** Wall Unit(s)

Driving Directions:

Follow Google Maps. Property will be on the East side of County Rd 144.



Listed By:
REALTY XPERTS

Affinity Real Estate Inc. participates in the Regional Multiple Listing Service of Minnesota, Inc Broker Reciprocity (sm) program, allowing us to display other broker's listings on our website. All properties are subject to prior sale, change or withdrawal.



Call Affinity Real Estate

218-237-3333

info@affinityrealestate.com



Affinity Real Estate - 600 Park Avenue South - Park Rapids MN 56470



website: www.AffinityRealEstate.com | email: info@affinityrealestate.com | office: 218-237-3333 | fax: 218-237-3377

Affinity
REAL ESTATE INC

\$165,000
MLS 7007216 Residential
3284 County Road 144
Waubun MN 56589



website: www.AffinityRealEstate.com | email: info@affinityrealestate.com | office: 218-237-3333 | fax: 218-237-3377



\$165,000
 MLS 7007216 Residential
 3284 County Road 144
 Waubun MN 56589



website: www.AffinityRealEstate.com | email: info@affinityrealestate.com | office: 218-237-3333 | fax: 218-237-3377

Affinity
REAL ESTATE INC

\$165,000
MLS 7007216 Residential
3284 County Road 144
Waubun MN 56589



website: www.AffinityRealEstate.com | email: info@affinityrealestate.com | office: 218-237-3333 | fax: 218-237-3377



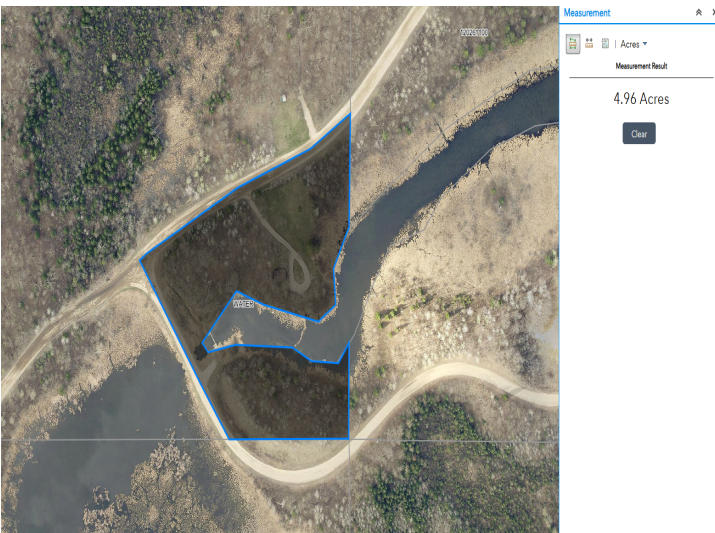
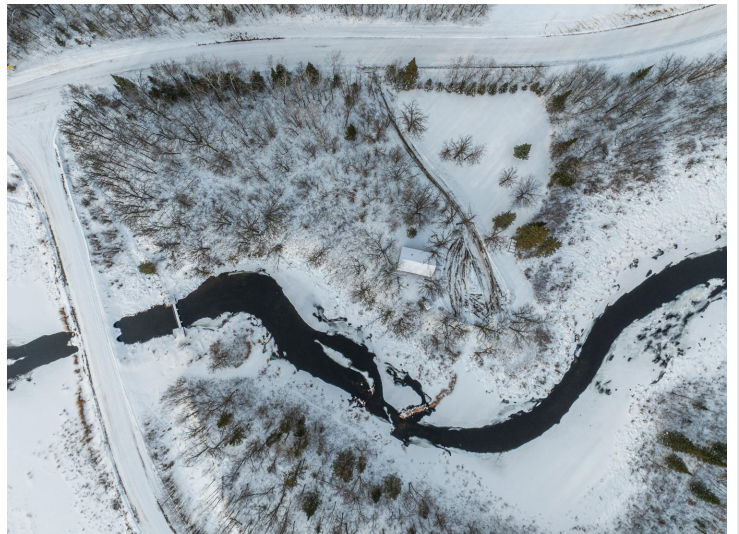
\$165,000
MLS 7007216 Residential
3284 County Road 144
Waubun MN 56589



website: www.AffinityRealEstate.com | email: info@affinityrealestate.com | office: 218-237-3333 | fax: 218-237-3377



\$165,000
 MLS 7007216 Residential
 3284 County Road 144
 Waubun MN 56589



Measurement
 Acres
 Measurement Result
 4.96 Acres
 Clear

website: www.AffinityRealEstate.com | email: info@affinityrealestate.com | office: 218-237-3333 | fax: 218-237-3377



\$165,000
 MLS 7007216 Residential
 3284 County Road 144
 Waubun MN 56589