



MLS 7007503 Residential

**\$459,900**

2,100 sq ft  
4 bedrooms  
2 baths

37715 Cass Line Road  
Laporte MN 56461

Status: Active

**Description:**

An exceptional country property near Laporte, Minnesota, offering the space, privacy, and views that are increasingly hard to find. Situated on over 64 acres, the home overlooks a peaceful duck pond in the front yard and opens up to some truly remarkable panoramic views from the back of the property (see video). The home features 4 bedrooms and 2 full bathrooms, all on one level, with an open and functional floor plan. The lower level is currently unfinished, providing a clean slate for additional living space, storage, or future expansion if desired. This is a rare opportunity to own a well-rounded country property with land, water, and views—all in a highly desirable North Central Minnesota location.

**Additional Details:**

Year Built	2013
Lot Acres	65.16
Lot Dimensions	Irregular
School District	1375
Taxes	\$3,002
Taxes with Assessments	\$3,002
Tax Year	2025

**Additional Features:**

**Basement:** Full, Partially Finished **Fuel:** Array **Heat:** Boiler **Sewer:** Tank with Drainage Field **Water:** 4-Inch Submersible **Air Conditioning:** None

**Driving Directions:**

From Walker take 371 north to Left or west on 108th to a right or North on 72nd Ave NW to sign on property.



Listed By:  
Cedar Point Realty

Affinity Real Estate Inc. participates in the Regional Multiple Listing Service of Minnesota, Inc Broker Reciprocity (sm) program, allowing us to display other broker's listings on our website. All properties are subject to prior sale, change or withdrawal.



**Call Affinity Real Estate**

**218-237-3333**

**info@affinityrealestate.com**



**Affinity Real Estate - 600 Park Avenue South - Park Rapids MN 56470**





website: [www.AffinityRealEstate.com](http://www.AffinityRealEstate.com) | email: [info@affinityrealestate.com](mailto:info@affinityrealestate.com) | office: 218-237-3333 | fax: 218-237-3377

**Affinity**  
REAL ESTATE INC

**\$459,900**  
MLS 7007503 Residential  
37715 Cass Line Road  
Laporte MN 56461





website: [www.AffinityRealEstate.com](http://www.AffinityRealEstate.com) | email: [info@affinityrealestate.com](mailto:info@affinityrealestate.com) | office: 218-237-3333 | fax: 218-237-3377



**\$459,900**  
 MLS 7007503 Residential  
 37715 Cass Line Road  
 Laporte MN 56461





website: [www.AffinityRealEstate.com](http://www.AffinityRealEstate.com) | email: [info@affinityrealestate.com](mailto:info@affinityrealestate.com) | office: 218-237-3333 | fax: 218-237-3377



**\$459,900**  
MLS 7007503 Residential  
37715 Cass Line Road  
Laporte MN 56461



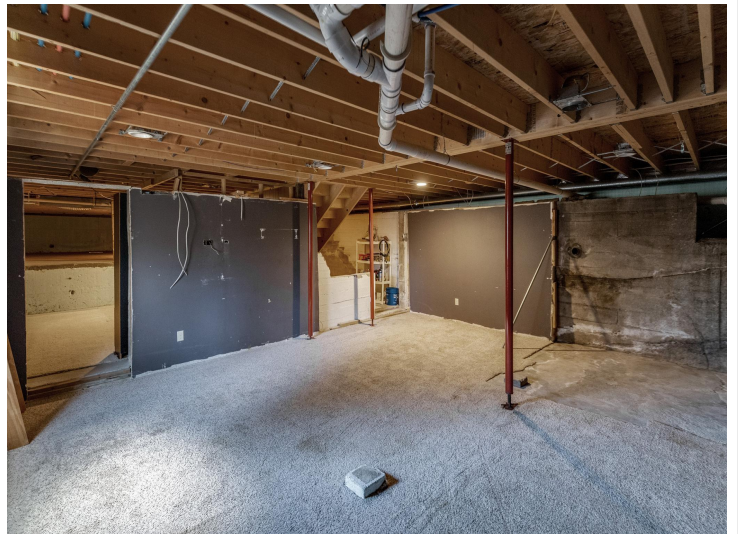


website: [www.AffinityRealEstate.com](http://www.AffinityRealEstate.com) | email: [info@affinityrealestate.com](mailto:info@affinityrealestate.com) | office: 218-237-3333 | fax: 218-237-3377

**Affinity**  
REAL ESTATE INC

**\$459,900**  
MLS 7007503 Residential  
37715 Cass Line Road  
Laporte MN 56461





website: [www.AffinityRealEstate.com](http://www.AffinityRealEstate.com) | email: [info@affinityrealestate.com](mailto:info@affinityrealestate.com) | office: 218-237-3333 | fax: 218-237-3377

**Affinity**  
REAL ESTATE INC

**\$459,900**  
MLS 7007503 Residential  
37715 Cass Line Road  
Laporte MN 56461





website: [www.AffinityRealEstate.com](http://www.AffinityRealEstate.com) | email: [info@affinityrealestate.com](mailto:info@affinityrealestate.com) | office: 218-237-3333 | fax: 218-237-3377

**Affinity**  
REAL ESTATE INC

**\$459,900**  
MLS 7007503 Residential  
37715 Cass Line Road  
Laporte MN 56461





website: [www.AffinityRealEstate.com](http://www.AffinityRealEstate.com) | email: [info@affinityrealestate.com](mailto:info@affinityrealestate.com) | office: 218-237-3333 | fax: 218-237-3377



**\$459,900**  
MLS 7007503 Residential  
37715 Cass Line Road  
Laporte MN 56461