

MLS 7007642 Land

\$36,900

1.49 Acres

Raw Land

TBD Grandview Rd
Elbow Lake MN 56531

Status: Active

Description:

In the Tipsinah Mounds Golf Course area, off Grandview Road, this 1.49-acre lot is a perfect find. It offers the chance to build your dream property surrounded by nature. Imagine creating a custom home, a large garage, or any structure you desire. This is a place where you can bring your ideas to life.

Living here means more than just enjoying beautiful views. You can take a golf cart to the clubhouse or spend a day at the nearby beach. The community is friendly and offers plenty of relaxation and activities.

This land is your blank canvas. Whether you're planning a family home, a weekend getaway, or a versatile space, this is your chance to make it happen. Don't miss out on this opportunity to build in the lovely Tipsinah Mounds community. Your future starts here!

Additional Details:

Lot Acres	1.49
Lot Dimensions	294'x222'
School District	1123
Taxes	\$154
Taxes with Assessments	\$154
Tax Year	2025

Additional Features:

Driving Directions:

From Elbow Lake take HWY 79 East. Left onto County Road 24 to sign on left.



Listed By:
Counselor Realty Inc of Alex

Affinity Real Estate Inc. participates in the Regional Multiple Listing Service of Minnesota, Inc Broker Reciprocity (sm) program, allowing us to display other broker's listings on our website. All properties are subject to prior sale, change or withdrawal.



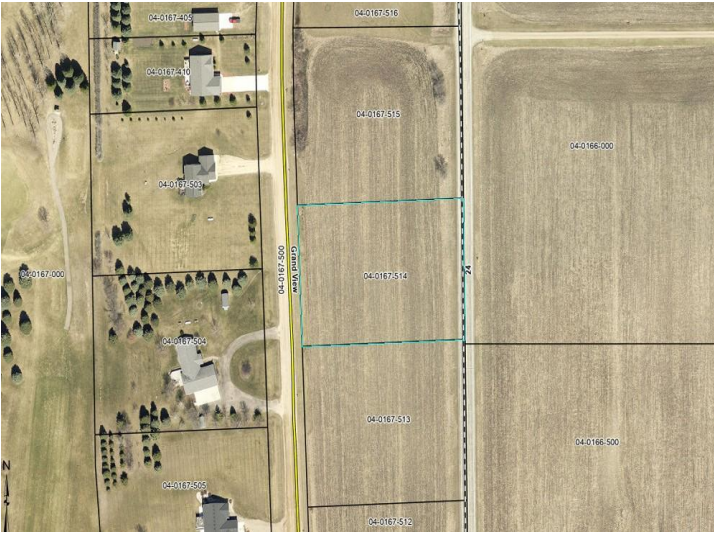
Call Affinity Real Estate

218-237-3333

info@affinityrealestate.com



Affinity Real Estate - 600 Park Avenue South - Park Rapids MN 56470



website: www.AffinityRealEstate.com | email: info@affinityrealestate.com | office: 218-237-3333 | fax: 218-237-3377



\$36,900
MLS 7007642 Land
TBD Grandview Rd
Elbow Lake MN 56531