



MLS 7007678 Residential

\$359,900

1,517 sq ft
3 bedrooms
2 baths

TBD Emily Circle
Baxter MN 56425

Status: Active

Description:

Welcome to the Rockwood Model on Emily Circle! This model features an open floorplan with 3 bedrooms, 2 bathrooms and lots of windows to let in natural sunlight. Stainless steel appliances and granite countertops complete the kitchen! Get out and enjoy all the Brainerd Lakes Area has to offer with paved trails filled with wildlife and lakes close by!

Additional Details:

Year Built	2026
Lot Acres	0.48
Lot Dimensions	irregular
Garage Stalls	2
School District	896
Taxes	\$194
Taxes with Assessments	\$194
Tax Year	2025

Additional Features:

Basement: None **Fuel:** Array **Garage:** 2 **Heat:** Forced Air **Sewer:** City Sewer/Connected **Water:** City Water/Connected **Air Conditioning:** Central Air

Driving Directions:

From 371|210 take 210 west to Memorywood Road and turn right. Take a left onto Emily Road, and then turn right onto Emily Circle.



Listed By:
Counselor Realty Brainerd Lakes

Affinity Real Estate Inc. participates in the Regional Multiple Listing Service of Minnesota, Inc Broker Reciprocity (sm) program, allowing us to display other broker's listings on our website. All properties are subject to prior sale, change or withdrawal.



Call Affinity Real Estate

218-237-3333

info@affinityrealestate.com



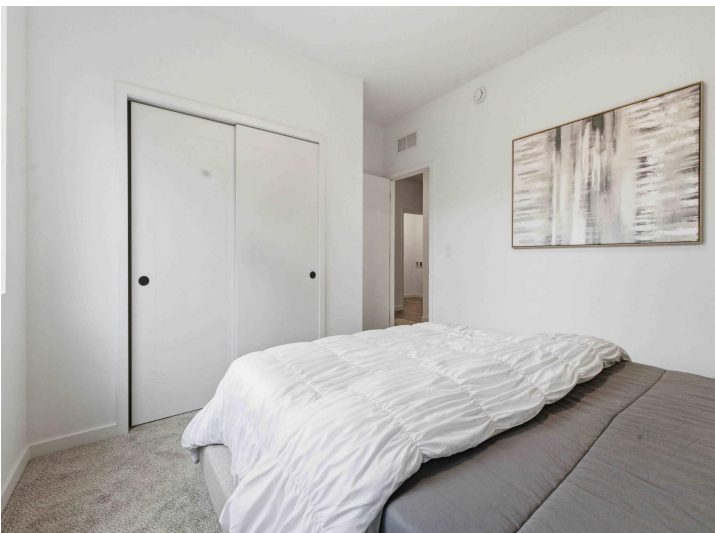
Affinity Real Estate - 600 Park Avenue South - Park Rapids MN 56470



website: www.AffinityRealEstate.com | email: info@affinityrealestate.com | office: 218-237-3333 | fax: 218-237-3377



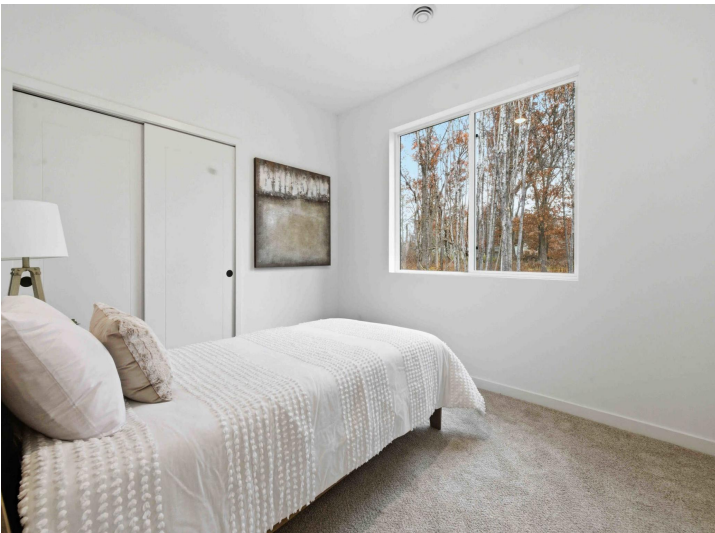
\$359,900
 MLS 7007678 Residential
 TBD Emily Circle
 Baxter MN 56425



website: www.AffinityRealEstate.com | email: info@affinityrealestate.com | office: 218-237-3333 | fax: 218-237-3377



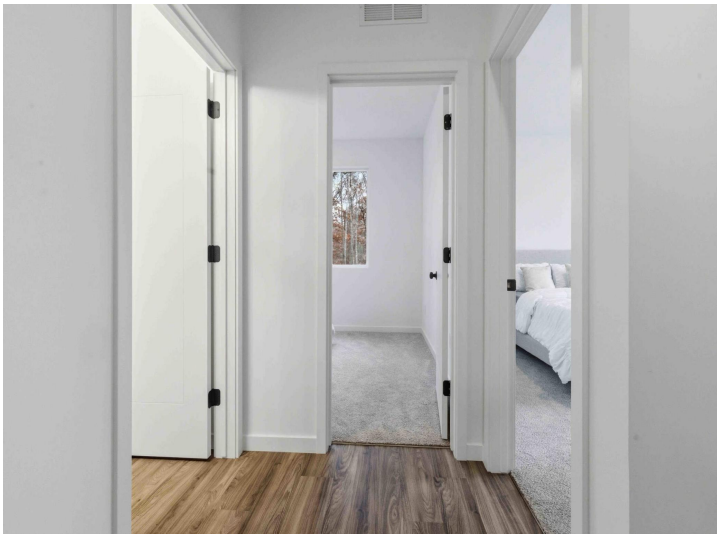
\$359,900
 MLS 7007678 Residential
 TBD Emily Circle
 Baxter MN 56425



website: www.AffinityRealEstate.com | email: info@affinityrealestate.com | office: 218-237-3333 | fax: 218-237-3377



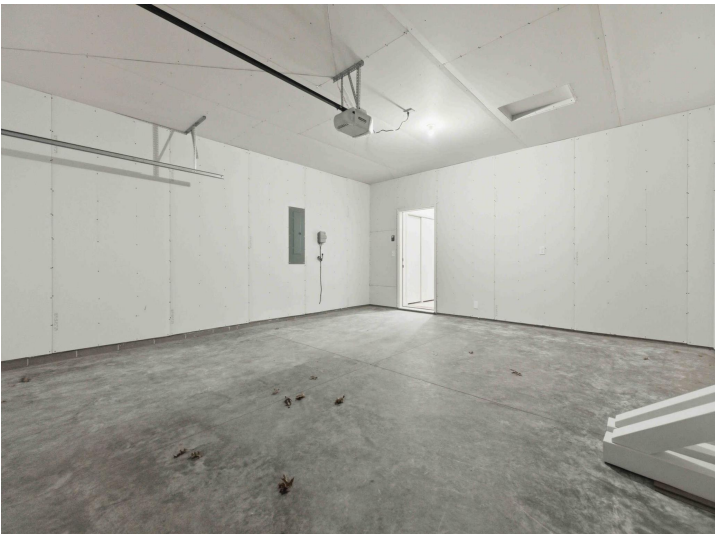
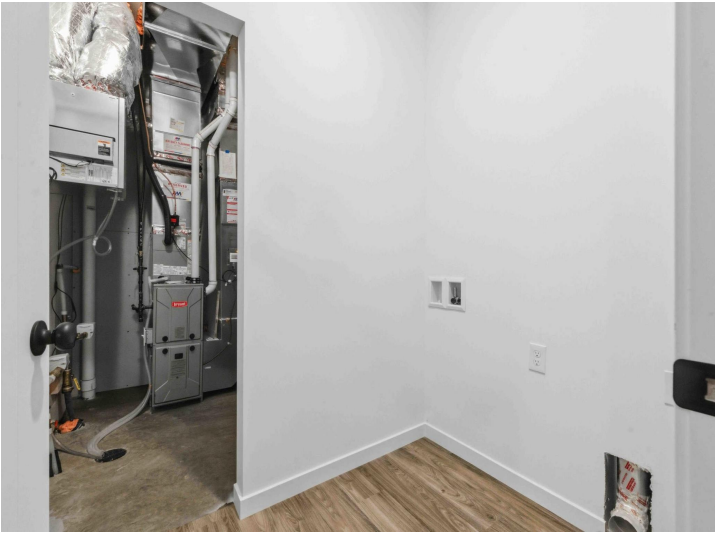
\$359,900
 MLS 7007678 Residential
 TBD Emily Circle
 Baxter MN 56425



website: www.AffinityRealEstate.com | email: info@affinityrealestate.com | office: 218-237-3333 | fax: 218-237-3377



\$359,900
 MLS 7007678 Residential
 TBD Emily Circle
 Baxter MN 56425



website: www.AffinityRealEstate.com | email: info@affinityrealestate.com | office: 218-237-3333 | fax: 218-237-3377



\$359,900
MLS 7007678 Residential
TBD Emily Circle
Baxter MN 56425