



MLS 7007699 Land

\$44,995

3.2 Acres
Raw Land

TBD Gasparilla Loop
Park Rapids MN 56470

Status: Active

Description:

Perfectly centered between Potato and Big Sand Lakes you will find the beautiful Woodhaven Acres development. This is a premier 3.2 acre offering that was initially intended to be designated as a park type community lot. However, when it was decided to forego the creation of an association, this property remained under private ownership. The setting is gorgeous! It features landscaping, a pavilion, electric, a drilled well and benefits from blacktop roads. There is also fiber optic internet at the property boundary. Whether you are looking for a new home site or a recreational headquarters this will not disappoint!

Additional Details:

Lot Acres	3.2
Lot Dimensions	573 x 242 x 598 x 241
School District	1384
Taxes	\$220
Taxes with Assessments	\$220
Tax Year	2025

Additional Features:

Driving Directions:

From CR 4 @ Hwy 34: Go North on CR 4 to a left on CR 18. Follow to a right on Green Pines Rd to another right on 230th St. Continue to a left on Gasparilla Dr. and proceed to property on right. No 'For Sale' sign on property.



Listed By:
Affinity Real Estate Inc.

Affinity Real Estate Inc. participates in the Regional Multiple Listing Service of Minnesota, Inc Broker Reciprocity (sm) program, allowing us to display other broker's listings on our website. All properties are subject to prior sale, change or withdrawal.



Call Affinity Real Estate

218-237-3333

info@affinityrealestate.com



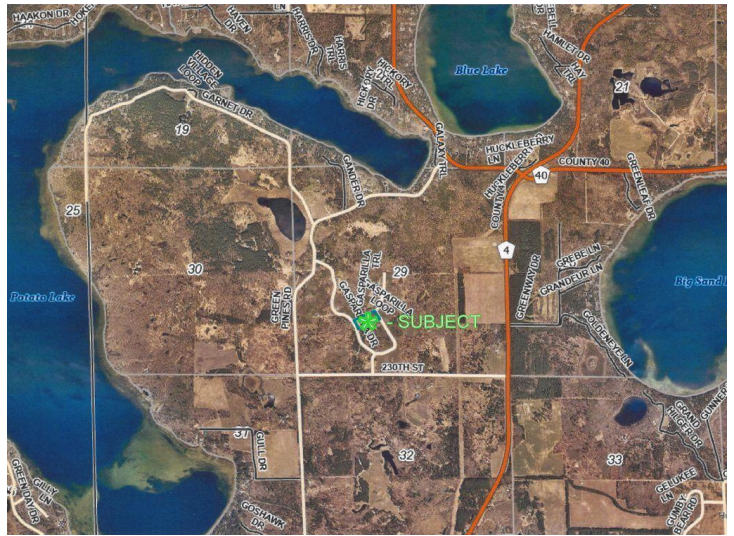
Affinity Real Estate - 600 Park Avenue South - Park Rapids MN 56470



website: www.AffinityRealEstate.com | email: info@affinityrealestate.com | office: 218-237-3333 | fax: 218-237-3377



\$44,995
 MLS 7007699 Land
 TBD Gasparilla Loop
 Park Rapids MN 56470



website: www.AffinityRealEstate.com | email: info@affinityrealestate.com | office: 218-237-3333 | fax:218-237-3377



\$44,995
 MLS 7007699 Land
 TBD Gasparilla Loop
 Park Rapids MN 56470