



MLS 7007849 Residential

\$380,000

2,400 sq ft
4 bedrooms
3 baths

1320 Whiting Road
Bemidji MN 56601

Status: Active

Description:

Spacious one-level 4BR/3BA home with a large primary suite and 9' ceilings throughout. Features include a Jack-and-Jill bath, quartz countertops, center island, gas fireplace, and a vaulted great room for a warm, welcoming feel. Open, bright layout ideal for family, guests, or home office use. 3-stall heated garage and new stamped concrete patio is an added plus.

Additional Details:

Year Built	2008
Lot Acres	0.42
Lot Dimensions	108x170
Garage Stalls	3
School District	1386
Taxes	\$3,994
Taxes with Assessments	\$3,994
Tax Year	2025

Additional Features:

Basement: None **Fuel:** Array **Garage:** 3 **Heat:** Forced Air, Fireplace(s) **Sewer:** Private Sewer, Septic System Compliant - Yes **Water:** 4-Inch Submersible, Drilled, Well **Air Conditioning:** Central Air

Driving Directions:

North on Irvine Ave, left on Whiting Rd, left on Aspen Ave, left into 2nd Prairiewood entrance. First house on the right.



Listed By:
Century 21 Dickinson

Affinity Real Estate Inc. participates in the Regional Multiple Listing Service of Minnesota, Inc Broker Reciprocity (sm) program, allowing us to display other broker's listings on our website. All properties are subject to prior sale, change or withdrawal.



Call Affinity Real Estate

218-237-3333

info@affinityrealestate.com



Affinity Real Estate - 600 Park Avenue South - Park Rapids MN 56470



website: www.AffinityRealEstate.com | email: info@affinityrealestate.com | office: 218-237-3333 | fax: 218-237-3377

Affinity
REAL ESTATE INC

\$380,000
MLS 7007849 Residential
1320 Whiting Road
Bemidji MN 56601



website: www.AffinityRealEstate.com | email: info@affinityrealestate.com | office: 218-237-3333 | fax: 218-237-3377

Affinity
REAL ESTATE INC

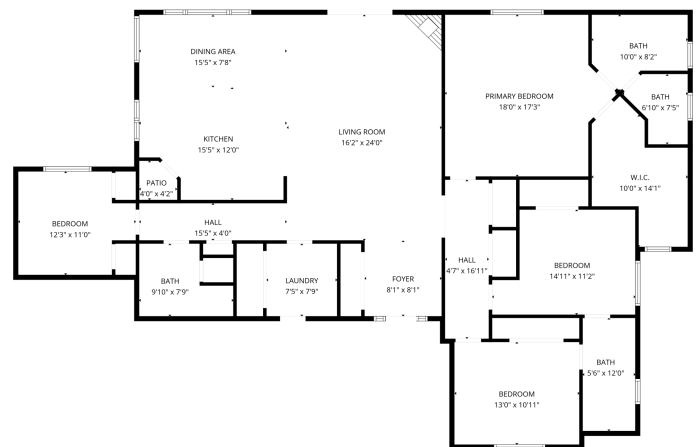
\$380,000
MLS 7007849 Residential
1320 Whiting Road
Bemidji MN 56601



website: www.AffinityRealEstate.com | email: info@affinityrealestate.com | office: 218-237-3333 | fax: 218-237-3377

Affinity
REAL ESTATE INC

\$380,000
MLS 7007849 Residential
1320 Whiting Road
Bemidji MN 56601



FLOOR PLAN CREATED BY CUBICARA APP. MEASUREMENTS DEEMED HIGHLY RELIABLE BUT NOT GUARANTEED.

website: www.AffinityRealEstate.com | email: info@affinityrealestate.com | office: 218-237-3333 | fax: 218-237-3377

Affinity
REAL ESTATE INC

\$380,000
MLS 7007849 Residential
1320 Whiting Road
Bemidji MN 56601