



MLS 7007885 Residential

\$89,900

1,158 sq ft
2 bedrooms
1 baths

1489 State Highway 200
Mahnomen MN 56557

Status: Active

Description:

Affordable home with so many updates. Covered porch on 2 sides & deck on the 3rd side. Main Floor bedroom and bath with new flooring. Upper level is an open type concept could be used as an office or 2nd bedroom. Newer metal roofing, siding, windows, electrical, plumbing and so much more! 2 mini splits for amazing comfort in all seasons. 2 car garage with a lot of potential all located on a .5 Ac lot.

Additional Details:

Year Built	1976
Lot Acres	0.5
Lot Dimensions	210x104
Garage Stalls	2
School District	1692
Taxes	\$128
Taxes with Assessments	\$250
Tax Year	2025

Additional Features:

Basement: Crawl Space **Fuel:** Array **Garage:** 2 **Heat:** Ductless Mini-Split **Sewer:** Private Sewer **Water:** Well **Air Conditioning:** Ductless Mini-Split

Driving Directions:

From Mahnomen take highway 200 just East of town south side.



Listed By:
218 Real Estate

Affinity Real Estate Inc. participates in the Regional Multiple Listing Service of Minnesota, Inc Broker Reciprocity (sm) program, allowing us to display other broker's listings on our website. All properties are subject to prior sale, change or withdrawal.



Call Affinity Real Estate

218-237-3333

info@affinityrealestate.com



Affinity Real Estate - 600 Park Avenue South - Park Rapids MN 56470



website: www.AffinityRealEstate.com | email: info@affinityrealestate.com | office: 218-237-3333 | fax: 218-237-3377

Affinity
REAL ESTATE INC

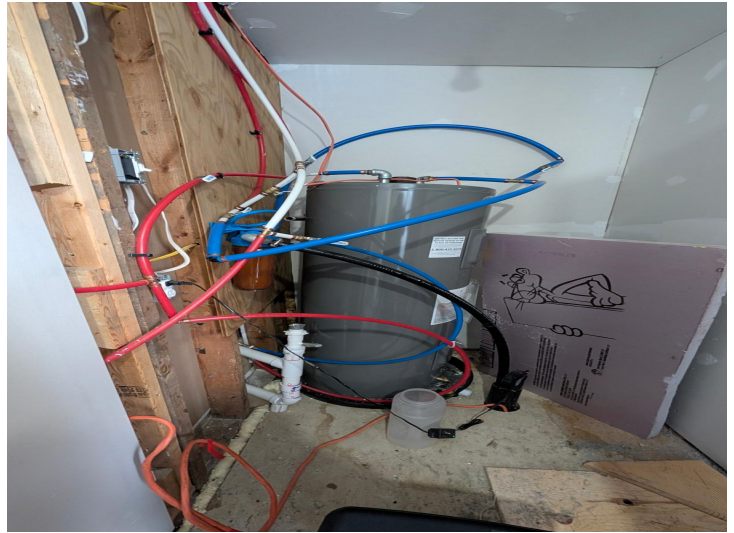
\$89,900
MLS 7007885 Residential
1489 State Highway 200
Mahnomen MN 56557



website: www.AffinityRealEstate.com | email: info@affinityrealestate.com | office: 218-237-3333 | fax: 218-237-3377



\$89,900
MLS 7007885 Residential
1489 State Highway 200
Mahnomen MN 56557



website: www.AffinityRealEstate.com | email: info@affinityrealestate.com | office: 218-237-3333 | fax: 218-237-3377



\$89,900
MLS 7007885 Residential
1489 State Highway 200
Mahnomen MN 56557



website: www.AffinityRealEstate.com | email: info@affinityrealestate.com | office: 218-237-3333 | fax: 218-237-3377



\$89,900
MLS 7007885 Residential
1489 State Highway 200
Mahnomen MN 56557