

MLS 7007920 Residential

\$986,900

2,244 sq ft
3 bedrooms
2 baths

12xxx County Road 8
Brainerd MN 56401

Status: Active

Description:

Minnesota lake life at its best! This thoughtfully designed single-level home by Mattson Construction will be an absolute joy to live in while enjoying lake living on Grave Lake. Close to Brainerd and other enjoyable lakes area communities, this new build will include over 1.4 acres of land, approximately 200' of lake shore, over 2200 finished square feet, an oversized insulated 4-stall garage, 3 bedrooms, 2 bathrooms, solid surface countertops, custom cabinets, 9' ceilings, in-floor heat, and much much more! Don't miss the opportunity to customize your finishes in this amazing home! Pictures, photographs, colors, features and sizes are for illustration purposes only and may vary from the home that is built.

Additional Details:


Year Built	2026
Lot Acres	1.45
Lot Dimensions	186x310
Garage Stalls	4
School District	896
Taxes	(unreported)
Taxes with Assessments	(unreported)
Tax Year	2026

Additional Features:

Fuel: Array **Heat:** Forced Air, In-Floor Heating

Driving Directions:

From metro area, take Hwy 169 north to Garrison. Turn west on Hwy 18 in Garrison and continue on 18 for 10 miles. Turn south onto County Rd. 8. Property is approximately 1/4 mile south on Cty Rd 8 on the left.



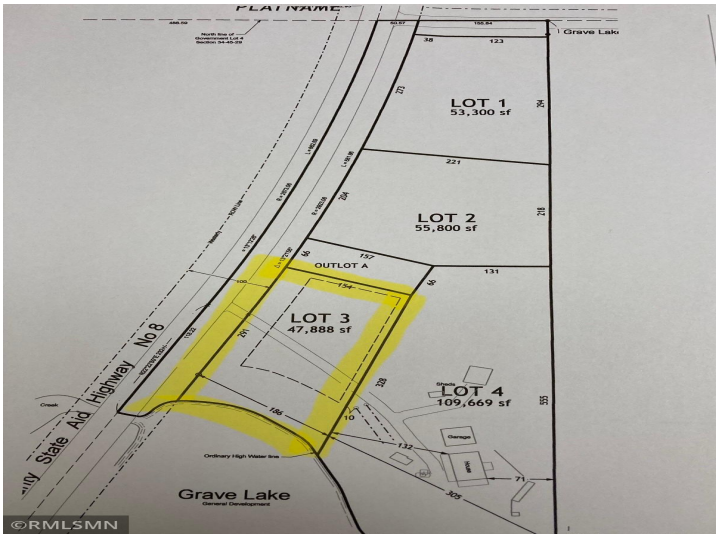
Listed By:
Advantage Point Realty

Affinity Real Estate Inc. participates in the Regional Multiple Listing Service of Minnesota, Inc Broker Reciprocity (sm) program, allowing us to display other broker's listings on our website. All properties are subject to prior sale, change or withdrawal.



Call Affinity Real Estate
218-237-3333
info@affinityrealestate.com

MLS REALTOR REAL ESTATE AFFINITY
Affinity Real Estate - 600 Park Avenue South - Park Rapids MN 56470



website: www.AffinityRealEstate.com | email: info@affinityrealestate.com | office: 218-237-3333 | fax:218-237-3377



\$986,900
MLS 7007920 Residential
12xxx County Road 8
Brainerd MN 56401

website: www.AffinityRealEstate.com | email: info@affinityrealestate.com | office: 218-237-3333 | fax:218-237-3377



\$986,900
MLS 7007920 Residential
12xxx County Road 8
Brainerd MN 56401

website: www.AffinityRealEstate.com | email: info@affinityrealestate.com | office: 218-237-3333 | fax:218-237-3377



\$986,900

MLS 7007920 Residential
12xxx County Road 8
Brainerd MN 56401

website: www.AffinityRealEstate.com | email: info@affinityrealestate.com | office: 218-237-3333 | fax:218-237-3377



\$986,900

MLS 7007920 Residential
12xxx County Road 8
Brainerd MN 56401