



MLS 7007957 Residential Income

\$199,900

Description:

Excellent investment opportunity! Three individual homes on 1.19 acres offer a quiet countryside setting with Wadena only minutes away. An ideal blend of privacy and proximity to everyday essentials and conveniences. These units formerly operated as half-way housing under the management of Bell Hill Recovery Center, which closed its doors entirely as of 12/31/2024. SOLD AS-IS. Bring your plans and unlock the potential within this unique property!

Additional Details:

Year Built	1973
Lot Acres	1.19
Lot Dimensions	550x165
School District	1053
Taxes	\$218
Taxes with Assessments	\$218
Tax Year	2025

Additional Features:

Basement: None **Fuel:** Array **Heat:** Forced Air **Sewer:** Shared Septic, Tank with Drainage Field **Water:** Shared System, Well

Driving Directions:

From Wadena, north on US-71 to 200th St on the left. Follow 200th to property address on the left.



Listed By:
Coldwell Banker Realty

Affinity Real Estate Inc. participates in the Regional Multiple Listing Service of Minnesota, Inc Broker Reciprocity (sm) program, allowing us to display other broker's listings on our website. All properties are subject to prior sale, change or withdrawal.



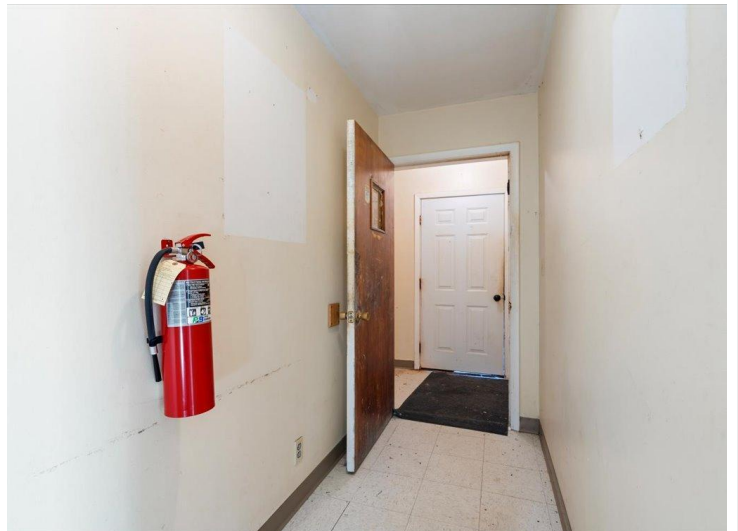
Call Affinity Real Estate

218-237-3333

info@affinityrealestate.com



Affinity Real Estate - 600 Park Avenue South - Park Rapids MN 56470



website: www.AffinityRealEstate.com | email: info@affinityrealestate.com | office: 218-237-3333 | fax: 218-237-3377



\$199,900
 MLS 7007957 Residential
 Income
 12213 200th Street
 Wadena MN 56482



website: www.AffinityRealEstate.com | email: info@affinityrealestate.com | office: 218-237-3333 | fax: 218-237-3377



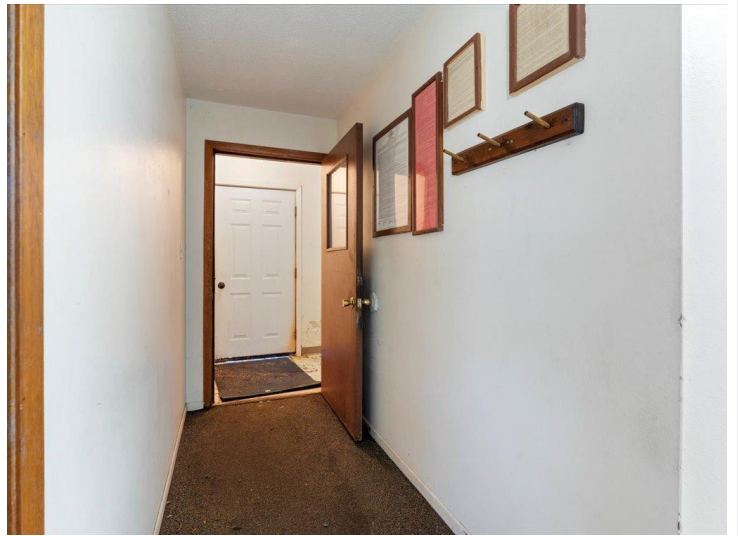
\$199,900
 MLS 7007957 Residential
 Income
 12213 200th Street
 Wadena MN 56482



website: www.AffinityRealEstate.com | email: info@affinityrealestate.com | office: 218-237-3333 | fax: 218-237-3377



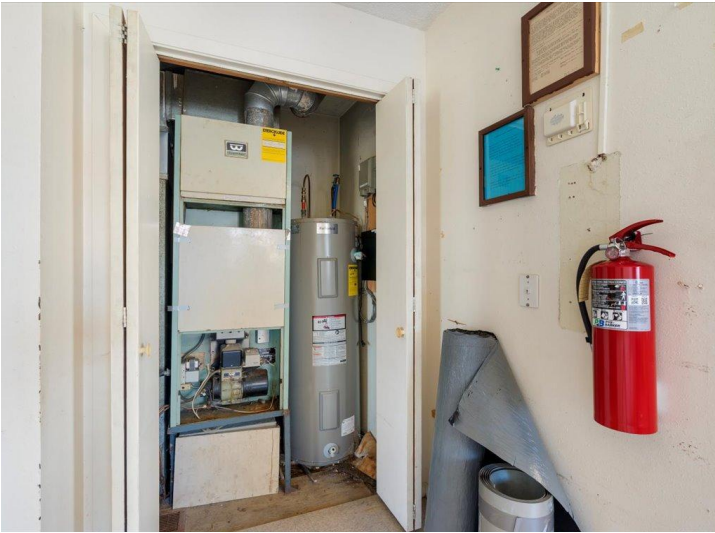
\$199,900
MLS 7007957 Residential
Income
12213 200th Street
Wadena MN 56482



website: www.AffinityRealEstate.com | email: info@affinityrealestate.com | office: 218-237-3333 | fax: 218-237-3377



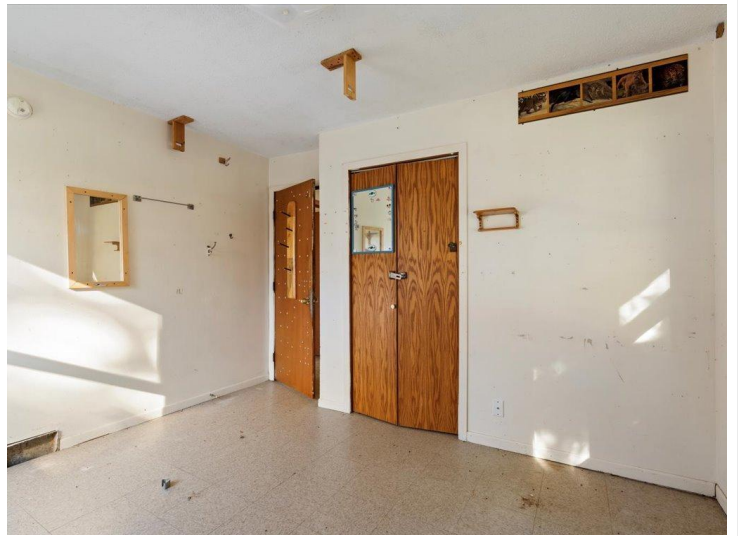
\$199,900
 MLS 7007957 Residential
 Income
 12213 200th Street
 Wadena MN 56482



website: www.AffinityRealEstate.com | email: info@affinityrealestate.com | office: 218-237-3333 | fax: 218-237-3377



\$199,900
 MLS 7007957 Residential
 Income
 12213 200th Street
 Wadena MN 56482



website: www.AffinityRealEstate.com | email: info@affinityrealestate.com | office: 218-237-3333 | fax: 218-237-3377



\$199,900
 MLS 7007957 Residential
 Income
 12213 200th Street
 Wadena MN 56482



website: www.AffinityRealEstate.com | email: info@affinityrealestate.com | office: 218-237-3333 | fax: 218-237-3377



\$199,900
 MLS 7007957 Residential
 Income
 12213 200th Street
 Wadena MN 56482



website: www.AffinityRealEstate.com | email: info@affinityrealestate.com | office: 218-237-3333 | fax: 218-237-3377



\$199,900
MLS 7007957 Residential
Income
12213 200th Street
Wadena MN 56482



website: www.AffinityRealEstate.com | email: info@affinityrealestate.com | office: 218-237-3333 | fax: 218-237-3377

Affinity
REAL ESTATE INC

\$199,900
MLS 7007957 Residential
Income
12213 200th Street
Wadena MN 56482



website: www.AffinityRealEstate.com | email: info@affinityrealestate.com | office: 218-237-3333 | fax: 218-237-3377



\$199,900
MLS 7007957 Residential
Income
12213 200th Street
Wadena MN 56482