



MLS 7008069 Residential

\$229,000

1,405 sq ft
3 bedrooms
2 baths

8325 24th Street
Sebeka MN 56477

Status: Pending

Description:

Discover up north living in this completely renovated one level home featuring 3 bedrooms, 2 bathrooms and 10 acres among the pines. A true North woods gem, this updated property is ready to become your hobby farm and hunting paradise. A charming chicken coop and lean-to border five fenced acres, perfect for cows and horses, while an additional clearing offers potential for more fencing or food plots. Mature pines, oaks, and maples surround the large yard. This modern home has been thoughtfully renovated through out. There is a brand new septic system, new kitchen cabinets, and appliances, new electric boiler, flooring, paint, and trim, plus updated bathroom vanities and finishes make it truly move in ready. The 20x40 insulated garage features a full concrete floor and ample space for recreational toys. Enjoy privacy and country living with convenient access to Hwy 64, Pine River, Spider Lake Recreational trails, and the Brainerd Lakes area. Don't miss this opportunity to make this your up north oasis!

Additional Details:

Year Built	1978
Lot Acres	10.17
Lot Dimensions	654x673x654x678
Garage Stalls	4
School District	1065
Taxes	\$644
Taxes with Assessments	\$710
Tax Year	2025

Additional Features:

Basement: Crawl Space **Fuel:** Array **Garage:** 4 **Heat:** Boiler, In-Floor Heating **Sewer:** Mound Septic, Septic System Compliant - Yes **Water:** Sand Point **Air Conditioning:** None

Driving Directions:

From Pine River, go North on 371 to County Rd 2 (24th St). Turn Left and go approximately 15 miles to property on the Left.



Listed By:
LPT Realty, LLC

Affinity Real Estate Inc. participates in the Regional Multiple Listing Service of Minnesota, Inc Broker Reciprocity (sm) program, allowing us to display other broker's listings on our website. All properties are subject to prior sale, change or withdrawal.



Call Affinity Real Estate

218-237-3333

info@affinityrealestate.com



Affinity Real Estate - 600 Park Avenue South - Park Rapids MN 56470



website: www.AffinityRealEstate.com | email: info@affinityrealestate.com | office: 218-237-3333 | fax: 218-237-3377

Affinity
REAL ESTATE INC

\$229,000
MLS 7008069 Residential
8325 24th Street
Sebeka MN 56477



website: www.AffinityRealEstate.com | email: info@affinityrealestate.com | office: 218-237-3333 | fax: 218-237-3377

Affinity
REAL ESTATE INC

\$229,000
MLS 7008069 Residential
8325 24th Street
Sebek MN 56477



website: www.AffinityRealEstate.com | email: info@affinityrealestate.com | office: 218-237-3333 | fax: 218-237-3377

Affinity
REAL ESTATE INC

\$229,000
MLS 7008069 Residential
8325 24th Street
Sebeka MN 56477



website: www.AffinityRealEstate.com | email: info@affinityrealestate.com | office: 218-237-3333 | fax: 218-237-3377

Affinity
REAL ESTATE INC

\$229,000
MLS 7008069 Residential
8325 24th Street
Sebeka MN 56477



website: www.AffinityRealEstate.com | email: info@affinityrealestate.com | office: 218-237-3333 | fax: 218-237-3377

Affinity
REAL ESTATE INC

\$229,000
MLS 7008069 Residential
8325 24th Street
Sebeka MN 56477



website: www.AffinityRealEstate.com | email: info@affinityrealestate.com | office: 218-237-3333 | fax: 218-237-3377



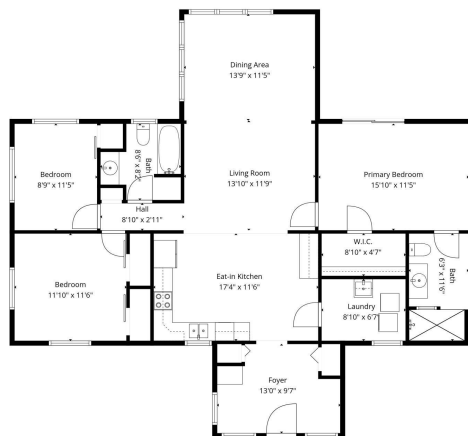
\$229,000
 MLS 7008069 Residential
 8325 24th Street
 Sebeka MN 56477



website: www.AffinityRealEstate.com | email: info@affinityrealestate.com | office: 218-237-3333 | fax: 218-237-3377



\$229,000
 MLS 7008069 Residential
 8325 24th Street
 Sebeka MN 56477



TOTAL: 1405 sq. ft.
1st floor: 1405 sq. ft.
EXCLUDED AREAS: WALLS: 94 sq. ft.
Measurements are a Estimated Area And Not A Replacement For A Professional Survey

website: www.AffinityRealEstate.com | email: info@affinityrealestate.com | office: 218-237-3333 | fax: 218-237-3377

Affinity
REAL ESTATE INC

\$229,000
MLS 7008069 Residential
8325 24th Street
Sebeka MN 56477