



MLS 7008190 Residential

\$184,900

1,000 sq ft
2 bedrooms
1 baths

18629 Sorrel Oak Road
Brainerd MN 56401

Status: Active

Description:

Affordable homeownership under \$200K in Brainerd Lakes Area and there's truly nothing else like it at this price point. Why rent when you can own AND have lake access included? Perfectly positioned between Baxter and Nisswa, this 2-bedroom home offers unbeatable convenience paired with a lifestyle that's hard to find at this price. Enjoy open-concept living, a 3-season porch, and easy main-level functionality, plus shared access to Hartley Lake just steps away. The HOA takes it a step further with access to a pontoon, tennis courts, and maintained common areas, making this a rare opportunity to enjoy lake life without the typical cost or upkeep. It's truly the best of both worlds. Recent updates include new flooring throughout the home, a newly installed mini split system (Fall 2025), a kitchen sink water purifier, and a new main garage door, giving first-time buyers peace of mind and move-in-ready comfort.

Additional Details:

Year Built	1989
Lot Acres	0.14
Lot Dimensions	60x100
Garage Stalls	1
School District	896
Taxes	\$890
Taxes with Assessments	\$890
Tax Year	2025

Additional Features:

Basement: Crawl Space **Fuel:** Array **Garage:** 1 **Heat:** Dual Fuel/Off Peak **Sewer:** Shared Septic **Water:** Shared System, Well **Air Conditioning:** Ductless Mini-Split

Driving Directions:

Highway 371 N to left on Green Gables Road, left on Hartley Lake Road, left on McFarland Shores, right on Sorrel Oak Road to home on the right



Listed By:
Woods to Water Real Estate

Affinity Real Estate Inc. participates in the Regional Multiple Listing Service of Minnesota, Inc Broker Reciprocity (sm) program, allowing us to display other broker's listings on our website. All properties are subject to prior sale, change or withdrawal.



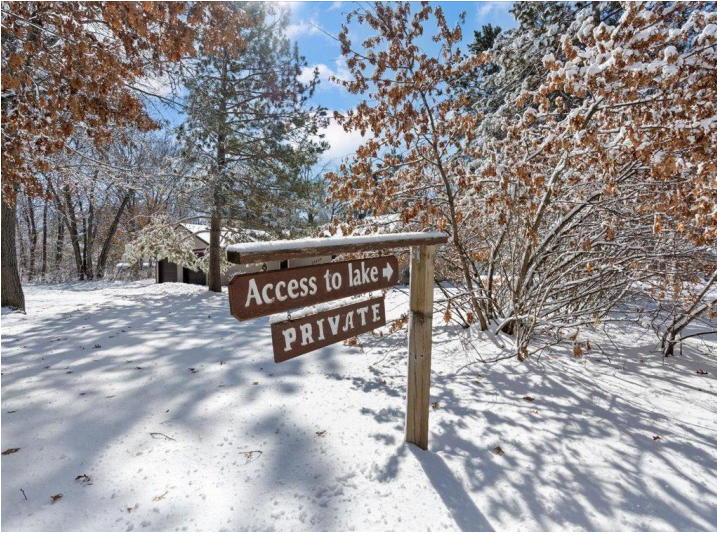
Call Affinity Real Estate

218-237-3333

info@affinityrealestate.com



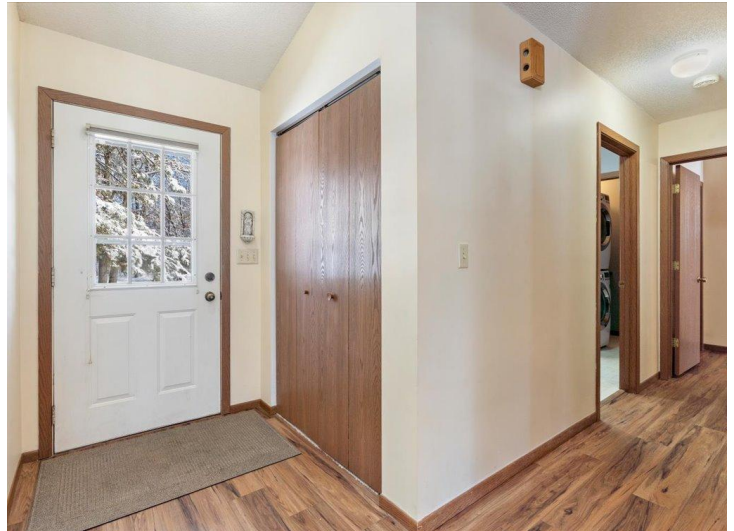
Affinity Real Estate - 600 Park Avenue South - Park Rapids MN 56470



website: www.AffinityRealEstate.com | email: info@affinityrealestate.com | office: 218-237-3333 | fax: 218-237-3377

Affinity
REAL ESTATE INC

\$184,900
MLS 7008190 Residential
18629 Sorrel Oak Road
Brainerd MN 56401



website: www.AffinityRealEstate.com | email: info@affinityrealestate.com | office: 218-237-3333 | fax:218-237-3377



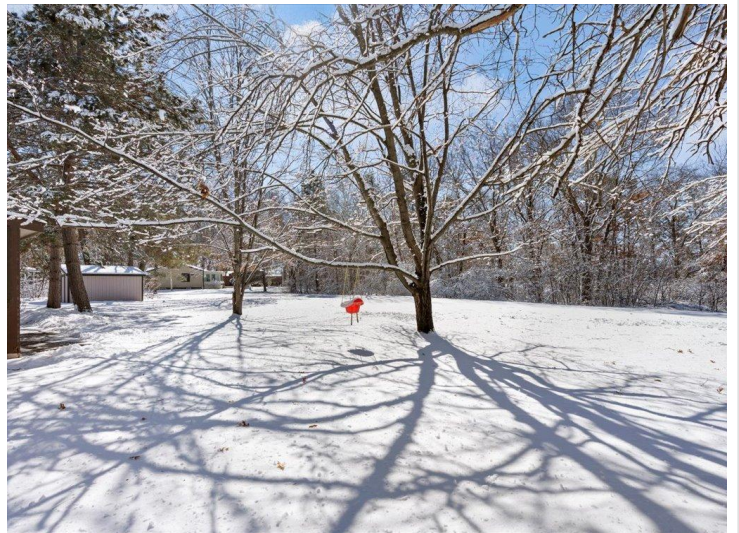
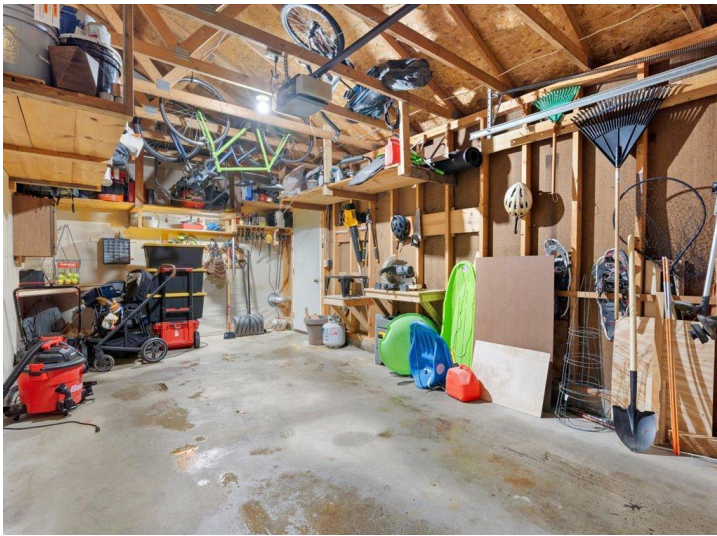
\$184,900
MLS 7008190 Residential
18629 Sorrel Oak Road
Brainerd MN 56401



website: www.AffinityRealEstate.com | email: info@affinityrealestate.com | office: 218-237-3333 | fax:218-237-3377

Affinity
REAL ESTATE INC

\$184,900
MLS 7008190 Residential
18629 Sorrel Oak Road
Brainerd MN 56401



website: www.AffinityRealEstate.com | email: info@affinityrealestate.com | office: 218-237-3333 | fax:218-237-3377

Affinity
REAL ESTATE INC

\$184,900
MLS 7008190 Residential
18629 Sorrel Oak Road
Brainerd MN 56401



website: www.AffinityRealEstate.com | email: info@affinityrealestate.com | office: 218-237-3333 | fax:218-237-3377



\$184,900
MLS 7008190 Residential
18629 Sorrel Oak Road
Brainerd MN 56401



website: www.AffinityRealEstate.com | email: info@affinityrealestate.com | office: 218-237-3333 | fax:218-237-3377



\$184,900
MLS 7008190 Residential
18629 Sorrel Oak Road
Brainerd MN 56401