



MLS 7008284 Commercial

**\$0**

110 Mag Seven Court  
Bemidji MN 56601

Status: Active

**Description:**

Professional office space available between downtown Bemidji and Bemidji High School. Excellent visibility, just off 5th Street/Division Road. Just over 2500sf, this space offers 7 offices, conference room, break room, copy/work room, and a spacious reception area. Two bathrooms shared between this space and the adjacent dental office.

**Additional Details:**

Year Built	2018
Lot Acres	0.786
Lot Dimensions	100x370
School District	1386
Taxes	\$20,795
Taxes with Assessments	\$20,795
Tax Year	2025

**Additional Features:**

**Fuel:** Array **Heat:** Forced Air **Sewer:** City Sewer/Connected **Water:** City Water/Connected **Air Conditioning:** Central Air

**Driving Directions:**

From Downtown Bemidji, West on 5th Street, through roundabout, left on Mag Seven Court SW to property on Left.



Listed By:  
Lake-N-Woods Realty

Affinity Real Estate Inc. participates in the Regional Multiple Listing Service of Minnesota, Inc Broker Reciprocity (sm) program, allowing us to display other broker's listings on our website. All properties are subject to prior sale, change or withdrawal.



**Call Affinity Real Estate**

**218-237-3333**

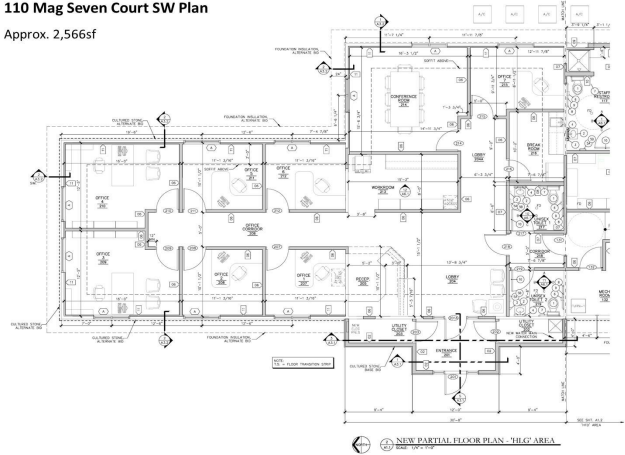
**info@affinityrealestate.com**



**Affinity Real Estate - 600 Park Avenue South - Park Rapids MN 56470**



**110 Mag Seven Court SW Plan**  
Approx. 2,566sf



website: [www.AffinityRealEstate.com](http://www.AffinityRealEstate.com) | email: [info@affinityrealestate.com](mailto:info@affinityrealestate.com) | office: 218-237-3333 | fax: 218-237-3377



**\$0**  
MLS 7008284 Commercial  
110 Mag Seven Court  
Bemidji MN 56601

website: [www.AffinityRealEstate.com](http://www.AffinityRealEstate.com) | email: [info@affinityrealestate.com](mailto:info@affinityrealestate.com) | office: 218-237-3333 | fax:218-237-3377



**\$0**  
MLS 7008284 Commercial  
110 Mag Seven Court  
Bemidji MN 56601

website: [www.AffinityRealEstate.com](http://www.AffinityRealEstate.com) | email: [info@affinityrealestate.com](mailto:info@affinityrealestate.com) | office: 218-237-3333 | fax:218-237-3377



**\$0**  
MLS 7008284 Commercial  
110 Mag Seven Court  
Bemidji MN 56601