



MLS 7008347 Residential

**\$399,900**

1,850 sq ft  
3 bedrooms  
2 baths

5468 Jericho Road  
Baxter MN 56425

Status: Active

#### Description:

This newly completed home offers exceptional design, thoughtful features, and comfort for every lifestyle. With 1,850 square feet of finished main-floor living space, this residence includes 3 bedrooms, 2 bathrooms, and a 2 car garage. Enjoy a covered front patio, a heated 3 season porch, quartz countertops, LVP, custom cabinetry, black stainless steel appliances, a spacious kitchen island, and an open-concept layout. A generous walk-in pantry. The primary suite provides private access to the 3 season porch, a large walk-in closet, and a well appointed bathroom. This quiet association offers more than maintenance-free living-it features a large common green space, pole building, and convenient storage options for your recreational equipment. Located in a prime Baxter area behind the Southdale Soccer Field and Park, the property also sits across from Forestview and the ISD 181-owned 157+ acres with miles of scenic walking trails. This is a one-of-a-kind development. If this home isn't the perfect fit, several available lots offer the opportunity to build a home tailored to your needs. Schedule your showing today!


#### Additional Details:

Year Built	2025
Lot Acres	0.06
Lot Dimensions	46x60
Garage Stalls	2
School District	896
Taxes	\$194
Taxes with Assessments	\$194
Tax Year	2026

#### Additional Features:

**Basement:** None **Fuel:** Array **Garage:** 2 **Heat:** Forced Air **Sewer:** City Sewer/Connected **Water:** City Water/Connected **Air Conditioning:** Central Air

#### Driving Directions:

2  Listed By: LPT Realty, LLC  
Head E Scenic Dr, right onto Mountain Ash Dr, right onto Jericho Rd, right

Affinity Real Estate Inc. participates in the Regional Multiple Listing Service of Minnesota, Inc Broker Reciprocity (sm) program, allowing us to display other broker's listings on our website. All properties are subject to prior sale, change or withdrawal.



**Call Affinity Real Estate**

**218-237-3333**

**info@affinityrealestate.com**



**Affinity Real Estate - 600 Park Avenue South - Park Rapids MN 56470**



website: [www.AffinityRealEstate.com](http://www.AffinityRealEstate.com) | email: [info@affinityrealestate.com](mailto:info@affinityrealestate.com) | office: 218-237-3333 | fax: 218-237-3377



**\$399,900**  
 MLS 7008347 Residential  
 5468 Jericho Road  
 Baxter MN 56425



website: [www.AffinityRealEstate.com](http://www.AffinityRealEstate.com) | email: [info@affinityrealestate.com](mailto:info@affinityrealestate.com) | office: 218-237-3333 | fax: 218-237-3377

**Affinity**  
REAL ESTATE INC

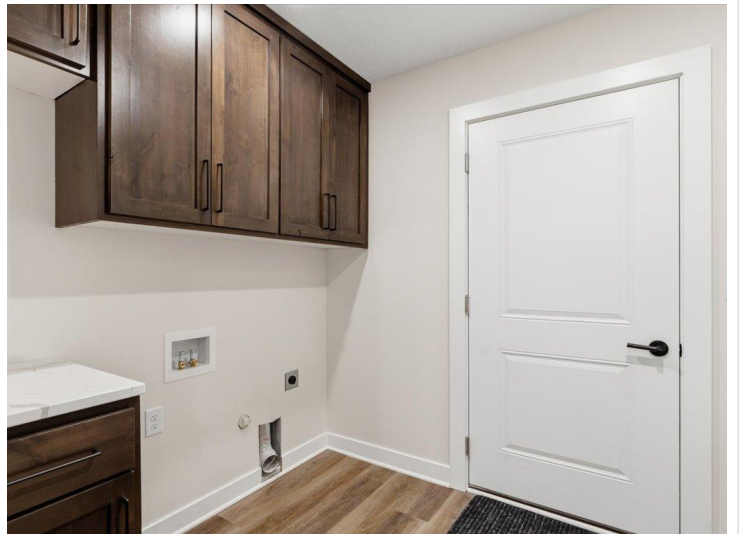
**\$399,900**  
MLS 7008347 Residential  
5468 Jericho Road  
Baxter MN 56425



website: [www.AffinityRealEstate.com](http://www.AffinityRealEstate.com) | email: [info@affinityrealestate.com](mailto:info@affinityrealestate.com) | office: 218-237-3333 | fax: 218-237-3377



**\$399,900**  
MLS 7008347 Residential  
5468 Jericho Road  
Baxter MN 56425



website: [www.AffinityRealEstate.com](http://www.AffinityRealEstate.com) | email: [info@affinityrealestate.com](mailto:info@affinityrealestate.com) | office: 218-237-3333 | fax: 218-237-3377

**Affinity**  
REAL ESTATE INC

**\$399,900**  
MLS 7008347 Residential  
5468 Jericho Road  
Baxter MN 56425



website: [www.AffinityRealEstate.com](http://www.AffinityRealEstate.com) | email: [info@affinityrealestate.com](mailto:info@affinityrealestate.com) | office: 218-237-3333 | fax: 218-237-3377



**\$399,900**  
 MLS 7008347 Residential  
 5468 Jericho Road  
 Baxter MN 56425