



MLS 7008753 Land

\$119,900

1 Acres
Plat Designed

26744 Ross Lake Road
Aitkin MN 56431

Status: Active

Description:

Enjoy a beautiful, wooded lot on Ross Lake! Approximately 1 acre with building eligibility. Over 150+ feet of lakeshore, with nice elevation to lake. Ready for your home or cabin! Please do not walk land without agent present and showing approved.

Additional Details:

Lot Acres	1
Lot Dimensions	154x261x150x311
School District	2275
Taxes	\$1
Taxes with Assessments	(unreported)
Tax Year	2025

Additional Features:

Driving Directions:

From Aitkin, go north on CR 22/CR24/CR36, turn on Cuyuna Trail, left on Ross Lake Road. Lot is on right side of road.



Listed By:
Elevate Realty LLC

Affinity Real Estate Inc. participates in the Regional Multiple Listing Service of Minnesota, Inc Broker Reciprocity (sm) program, allowing us to display other broker's listings on our website. All properties are subject to prior sale, change or withdrawal.



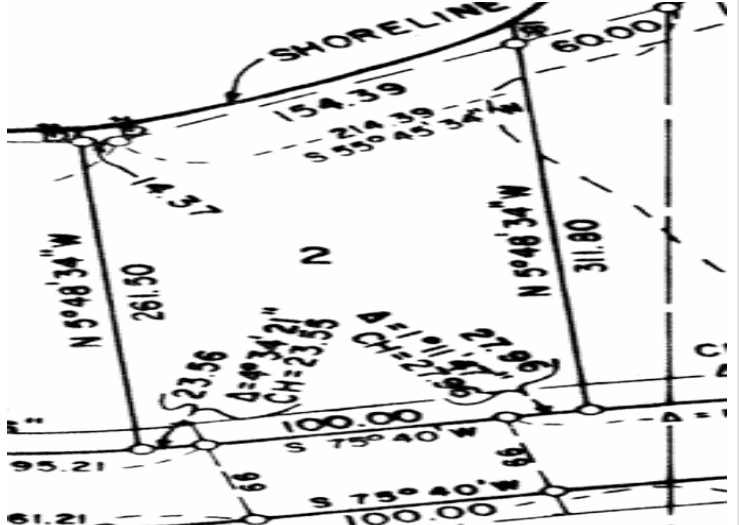
Call Affinity Real Estate

218-237-3333

info@affinityrealestate.com



Affinity Real Estate - 600 Park Avenue South - Park Rapids MN 56470



website: www.AffinityRealEstate.com | email: info@affinityrealestate.com | office: 218-237-3333 | fax: 218-237-3377



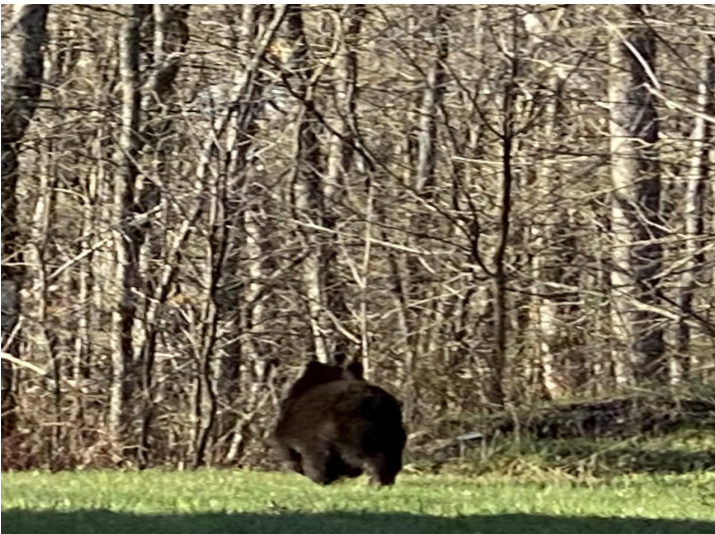
\$119,900
 MLS 7008753 Land
 26744 Ross Lake Road
 Aitkin MN 56431



website: www.AffinityRealEstate.com | email: info@affinityrealestate.com | office: 218-237-3333 | fax: 218-237-3377



\$119,900
MLS 7008753 Land
26744 Ross Lake Road
Aitkin MN 56431



website: www.AffinityRealEstate.com | email: info@affinityrealestate.com | office: 218-237-3333 | fax:218-237-3377



\$119,900
MLS 7008753 Land
26744 Ross Lake Road
Aitkin MN 56431