



MLS 7008848 Residential

\$529,900

2,720 sq ft
3 bedrooms
2 baths

12409 Far Portage Drive
Park Rapids MN 56470

Status: Pending

Description:

Wonderful opportunity on this amazing lake home on Portage Lake! Just 5 minutes north of Park Rapids and 15 minutes South of Itasca State Park! This spacious 3 bedroom 2 bath home has been wonderfully updated and has huge lake views with the perfect southern exposure. Nearly 3,000 square feet of finished living area on the two levels with a huge lower level family room. Also includes an attached double garage and a separate 28x40 steel building for all the toys or extra parking.

Additional Details:

Year Built	1993
Lot Acres	1.98
Lot Dimensions	172x424x249x368
Garage Stalls	4
School District	1384
Taxes	\$2,538
Taxes with Assessments	\$2,538
Tax Year	2026

Additional Features:

Basement: Block, Daylight/Lookout Windows, Finished, Full, Walkout **Fuel:** Array **Garage:** 4 **Heat:** Forced Air, Fireplace(s) **Sewer:** Private Sewer, Tank with Drainage Field **Water:** 4-Inch Submersible, Private, Well **Air Conditioning:** Central Air

Driving Directions:

From Park Rapids, go north on Hwy 71 for approximately 3 miles to Far Portage Drive and take a left and follow to 12409 on the left side.



Listed By:
Keller Williams Realty Professionals

Affinity Real Estate Inc. participates in the Regional Multiple Listing Service of Minnesota, Inc Broker Reciprocity (sm) program, allowing us to display other broker's listings on our website. All properties are subject to prior sale, change or withdrawal.



Call Affinity Real Estate

218-237-3333

info@affinityrealestate.com



Affinity Real Estate - 600 Park Avenue South - Park Rapids MN 56470



website: www.AffinityRealEstate.com | email: info@affinityrealestate.com | office: 218-237-3333 | fax: 218-237-3377



\$529,900
 MLS 7008848 Residential
 12409 Far Portage Drive
 Park Rapids MN 56470



website: www.AffinityRealEstate.com | email: info@affinityrealestate.com | office: 218-237-3333 | fax: 218-237-3377



\$529,900
 MLS 7008848 Residential
 12409 Far Portage Drive
 Park Rapids MN 56470



website: www.AffinityRealEstate.com | email: info@affinityrealestate.com | office: 218-237-3333 | fax: 218-237-3377

Affinity
REAL ESTATE INC

\$529,900
MLS 7008848 Residential
12409 Far Portage Drive
Park Rapids MN 56470



website: www.AffinityRealEstate.com | email: info@affinityrealestate.com | office: 218-237-3333 | fax: 218-237-3377

Affinity
REAL ESTATE INC

\$529,900
MLS 7008848 Residential
12409 Far Portage Drive
Park Rapids MN 56470



website: www.AffinityRealEstate.com | email: info@affinityrealestate.com | office: 218-237-3333 | fax: 218-237-3377

Affinity
REAL ESTATE INC

\$529,900
MLS 7008848 Residential
12409 Far Portage Drive
Park Rapids MN 56470



website: www.AffinityRealEstate.com | email: info@affinityrealestate.com | office: 218-237-3333 | fax: 218-237-3377

Affinity
REAL ESTATE INC

\$529,900
MLS 7008848 Residential
12409 Far Portage Drive
Park Rapids MN 56470



website: www.AffinityRealEstate.com | email: info@affinityrealestate.com | office: 218-237-3333 | fax: 218-237-3377



\$529,900
 MLS 7008848 Residential
 12409 Far Portage Drive
 Park Rapids MN 56470



website: www.AffinityRealEstate.com | email: info@affinityrealestate.com | office: 218-237-3333 | fax: 218-237-3377



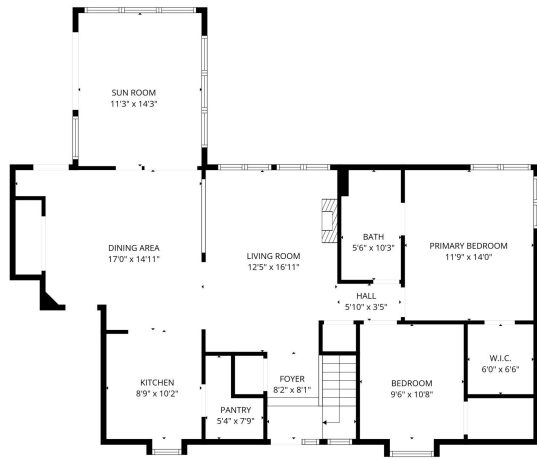
\$529,900
 MLS 7008848 Residential
 12409 Far Portage Drive
 Park Rapids MN 56470



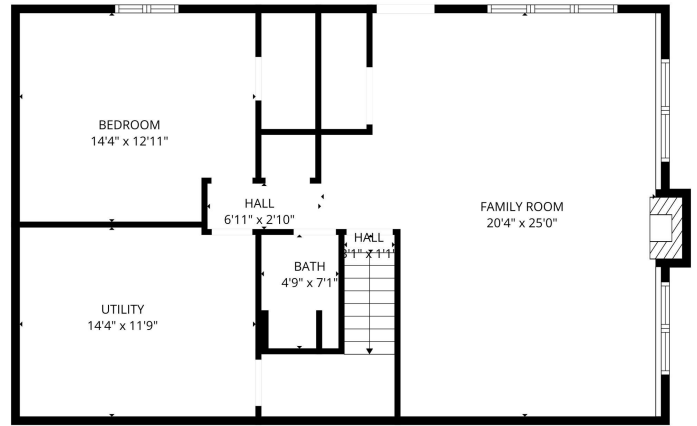
website: www.AffinityRealEstate.com | email: info@affinityrealestate.com | office: 218-237-3333 | fax: 218-237-3377



\$529,900
 MLS 7008848 Residential
 12409 Far Portage Drive
 Park Rapids MN 56470



FLOOR PLAN CREATED BY CURICASA APP. MEASUREMENTS DEEMED HIGHLY RELIABLE BUT NOT GUARANTEED.



FLOOR PLAN CREATED BY CURICASA APP. MEASUREMENTS DEEMED HIGHLY RELIABLE BUT NOT GUARANTEED.

website: www.AffinityRealEstate.com | email: info@affinityrealestate.com | office: 218-237-3333 | fax: 218-237-3377



\$529,900
 MLS 7008848 Residential
 12409 Far Portage Drive
 Park Rapids MN 56470