



MLS 7008884 Residential

\$315,000

2,149 sq ft
3 bedrooms
2 baths

8378 Red Pine Circle
Baxter MN 56425

Status: Active

Description:

Location is key with this 3 BR, 2 bath home that is close to schools, the college, shopping and parks. Laundry is conveniently located on the main level, along with a bedroom and bathroom. Natural light is abundant in the living room and dining area. Have a fire in the living room fireplace on those chilly days. Upstairs features 2 large bedrooms and a full bath. Spacious family room downstairs and a large storage room. A bowed wall was discovered during a home inspection. It has been remedied by a licensed contractor, with the plans from a structural engineer. Each stud is now sandwiched between treated 2x8 studs. New sprayed insulation and sheetrock. This home is ready for you to move right in. Enjoy the wildlife that visit the backyard, while sitting on your deck! Book a showing to see your new home today in this desirable neighborhood!

Additional Details:

Year Built	1984
Lot Acres	0.46
Lot Dimensions	115x174x115x174
Garage Stalls	2
School District	896
Taxes	\$2,814
Taxes with Assessments	\$2,814
Tax Year	2025

Additional Features:

Basement: Finished, Full, Storage Space, Wood **Fuel:** Array **Garage:** 2 **Heat:** Forced Air **Sewer:** City Sewer/Connected **Water:** City Water/Connected, Well **Air Conditioning:** Central Air

Driving Directions:

From the 210/371 intersection, go South on 371. Left on County Rd 48 (Highland Scenic) to left on Red Pine Circle Rd to 8378 Red Pine Circle



Listed By:
LPT Realty, LLC

Affinity Real Estate Inc. participates in the Regional Multiple Listing Service of Minnesota, Inc Broker Reciprocity (sm) program, allowing us to display other broker's listings on our website. All properties are subject to prior sale, change or withdrawal.



Call Affinity Real Estate

218-237-3333

info@affinityrealestate.com



Affinity Real Estate - 600 Park Avenue South - Park Rapids MN 56470



website: www.AffinityRealEstate.com | email: info@affinityrealestate.com | office: 218-237-3333 | fax: 218-237-3377

Affinity
REAL ESTATE INC

\$315,000
MLS 7008884 Residential
8378 Red Pine Circle
Baxter MN 56425



website: www.AffinityRealEstate.com | email: info@affinityrealestate.com | office: 218-237-3333 | fax: 218-237-3377

Affinity
REAL ESTATE INC

\$315,000
MLS 7008884 Residential
8378 Red Pine Circle
Baxter MN 56425



website: www.AffinityRealEstate.com | email: info@affinityrealestate.com | office: 218-237-3333 | fax: 218-237-3377

Affinity
REAL ESTATE INC

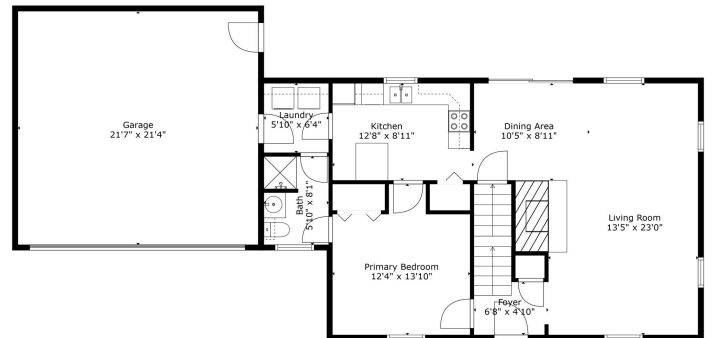
\$315,000
MLS 7008884 Residential
8378 Red Pine Circle
Baxter MN 56425



website: www.AffinityRealEstate.com | email: info@affinityrealestate.com | office: 218-237-3333 | fax: 218-237-3377



\$315,000
 MLS 7008884 Residential
 8378 Red Pine Circle
 Baxter MN 56425



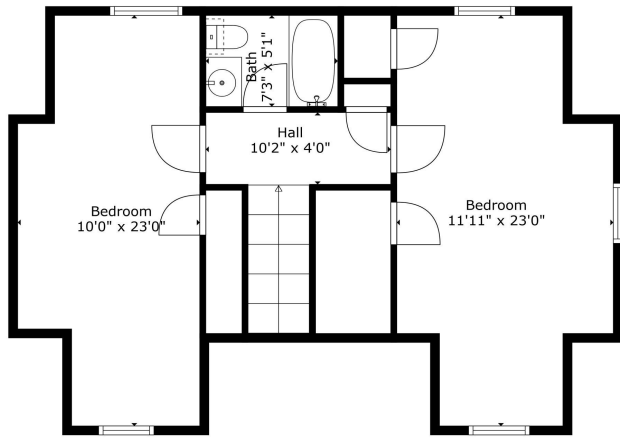
TOTAL: 1924 sq. ft.
 BELOW GROUND: 471 sq. ft. FLOOR 2: 247 sq. ft. FLOOR 3: 696 sq. ft.
 EXCLUDED AREAS: UTILITY: 376 sq. ft. GARAGE: 461 sq. ft. LOW CEILING: 23 sq. ft.
 WALLS: 225 sq. ft.

Measurements Are Estimated And Are Not A Replacement For A Licensed Surveyor.

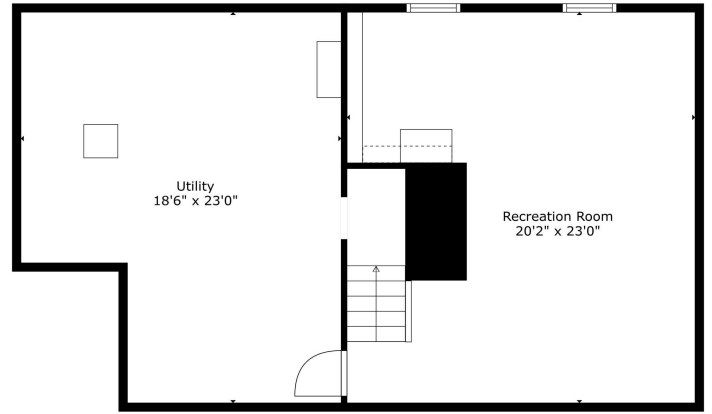
website: www.AffinityRealEstate.com | email: info@affinityrealestate.com | office: 218-237-3333 | fax: 218-237-3377

Affinity
 REAL ESTATE INC

\$315,000
 MLS 7008884 Residential
 8378 Red Pine Circle
 Baxter MN 56425



TOTAL: 1924 sq. ft.
 BELOW GROUND: 471 sq. ft. FLOOR 2: 847 sq. ft. FLOOR 3: 606 sq. ft.
 EXCLUDED AREAS: UTILITY: 376 sq. ft. GARAGE: 461 sq. ft. LOW CEILING: 23 sq. ft.
 WALLS: 225 sq. ft.
 Measurements Are Estimated And Are Not A Replacement For a Licensed Surveyor.



TOTAL: 1924 sq. ft.
 BELOW GROUND: 471 sq. ft. FLOOR 2: 847 sq. ft. FLOOR 3: 606 sq. ft.
 EXCLUDED AREAS: UTILITY: 376 sq. ft. GARAGE: 461 sq. ft. LOW CEILING: 23 sq. ft.
 WALLS: 225 sq. ft.
 Measurements Are Estimated And Are Not A Replacement For a Licensed Surveyor.



website: www.AffinityRealEstate.com | email: info@affinityrealestate.com | office: 218-237-3333 | fax: 218-237-3377



\$315,000
 MLS 7008884 Residential
 8378 Red Pine Circle
 Baxter MN 56425



website: www.AffinityRealEstate.com | email: info@affinityrealestate.com | office: 218-237-3333 | fax: 218-237-3377



\$315,000
 MLS 7008884 Residential
 8378 Red Pine Circle
 Baxter MN 56425



website: www.AffinityRealEstate.com | email: info@affinityrealestate.com | office: 218-237-3333 | fax:218-237-3377



\$315,000
MLS 7008884 Residential
8378 Red Pine Circle
Baxter MN 56425