



MLS 7008918 Residential

\$349,000

2,542 sq ft
5 bedrooms
3 baths

42626 County Highway 125
Perham MN 56573

Status: Pending



Description:

Discover the perfect blend of country living and convenience with this wonderful hobby farm! This spacious property features a charming 5-bedroom, 3-bathroom home with a block foundation and a finished basement, complete with egress windows and gas fireplace. Enjoy the fenced backyard and the breezeway leading to an insulated attached garage. The property boasts multiple sheds, and an outdoor arena, making it ideal for equestrian enthusiasts. Additionally, a finished 40 x 60 post frame shed with 16' sidewalls and a 16x14 overhead door offers ample storage and workspace. With newer shingles and windows, this move-in ready home is a true gem for those seeking a serene lifestyle. Don't miss out on this exceptional opportunity!

Additional Details:

Year Built	2002
Lot Acres	6.01
Lot Dimensions	6 acres
Garage Stalls	2
School District	1955
Taxes	\$2,758
Taxes with Assessments	\$2,752
Tax Year	2025

Additional Features:

Basement: Block, Egress Window(s), Full **Fuel:** Array **Garage:** 2 **Heat:** Forced Air **Sewer:** Tank with Drainage Field **Water:** 4-Inch Submersible
Air Conditioning: Central Air

Driving Directions:

42626 Co Hwy 125, Perham MN 56573



Listed By:
New Horizons Realty Of Perham

Affinity Real Estate Inc. participates in the Regional Multiple Listing Service of Minnesota, Inc Broker Reciprocity (sm) program, allowing us to display other broker's listings on our website. All properties are subject to prior sale, change or withdrawal.



Call Affinity Real Estate

218-237-3333

info@affinityrealestate.com



Affinity Real Estate - 600 Park Avenue South - Park Rapids MN 56470



website: www.AffinityRealEstate.com | email: info@affinityrealestate.com | office: 218-237-3333 | fax: 218-237-3377

Affinity
REAL ESTATE INC

\$349,000
MLS 7008918 Residential
42626 County Highway 125
Perham MN 56573



website: www.AffinityRealEstate.com | email: info@affinityrealestate.com | office: 218-237-3333 | fax: 218-237-3377



\$349,000
 MLS 7008918 Residential
 42626 County Highway 125
 Perham MN 56573



website: www.AffinityRealEstate.com | email: info@affinityrealestate.com | office: 218-237-3333 | fax: 218-237-3377

Affinity
REAL ESTATE INC

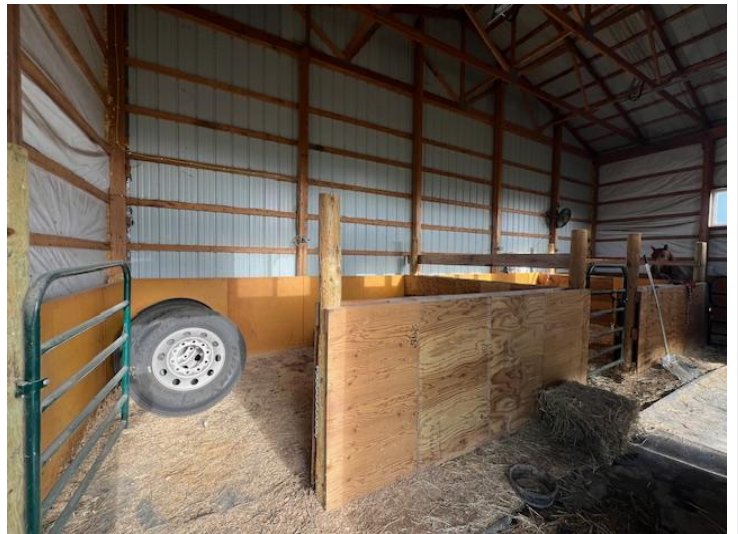
\$349,000
MLS 7008918 Residential
42626 County Highway 125
Perham MN 56573



website: www.AffinityRealEstate.com | email: info@affinityrealestate.com | office: 218-237-3333 | fax: 218-237-3377



\$349,000
 MLS 7008918 Residential
 42626 County Highway 125
 Perham MN 56573



website: www.AffinityRealEstate.com | email: info@affinityrealestate.com | office: 218-237-3333 | fax: 218-237-3377

Affinity
REAL ESTATE INC

\$349,000
MLS 7008918 Residential
42626 County Highway 125
Perham MN 56573



website: www.AffinityRealEstate.com | email: info@affinityrealestate.com | office: 218-237-3333 | fax: 218-237-3377

Affinity
REAL ESTATE INC

\$349,000
MLS 7008918 Residential
42626 County Highway 125
Perham MN 56573



website: www.AffinityRealEstate.com | email: info@affinityrealestate.com | office: 218-237-3333 | fax: 218-237-3377

Affinity
REAL ESTATE INC

\$349,000
MLS 7008918 Residential
42626 County Highway 125
Perham MN 56573



website: www.AffinityRealEstate.com | email: info@affinityrealestate.com | office: 218-237-3333 | fax: 218-237-3377

Affinity
REAL ESTATE INC

\$349,000
MLS 7008918 Residential
42626 County Highway 125
Perham MN 56573



website: www.AffinityRealEstate.com | email: info@affinityrealestate.com | office: 218-237-3333 | fax: 218-237-3377



\$349,000
MLS 7008918 Residential
42626 County Highway 125
Perham MN 56573