



MLS 7009220 Residential

**\$329,900**

2,674 sq ft  
2 bedrooms  
2 baths

4400 112th Street  
Pillager MN 56473

Status: Pending

**Description:**

Charming 2-bedroom, 2-bath Pillager home offering a peaceful country atmosphere just minutes from town, set on 4+ acres with plenty of elbow room. The open-concept living, kitchen, and dining area is ideal for everyday living and entertaining, complemented by a bright four-season sunroom. Enjoy outdoor living with front and rear decks, a rear patio, and a walk-out basement. The finished lower level features an open layout with potential for additional bedrooms, plus a laundry/storage room and ample space for expansion. A large garage includes a shop/man cave and lean-to, making this property perfect for hobbyists, storage, or extra workspace. This one is a must see. Don't miss out, this property has alot of appeal.

**Additional Details:**

Year Built	2003
Lot Acres	4.59
Lot Dimensions	IRR
Garage Stalls	3
School District	726
Taxes	\$1,664
Taxes with Assessments	\$1,730
Tax Year	2025

**Additional Features:**

**Basement:** Block, Egress Window(s), Finished, Full, Partially Finished, Storage Space, Walkout **Fuel:** Array **Garage:** 3 **Heat:** Forced Air **Sewer:** Private Sewer, Tank with Drainage Field **Water:** 4-Inch Submersible, Drilled, Private, Well **Air Conditioning:** Central Air

**Driving Directions:**

From MN-210 W: turn right onto Co Rd 1 SW, turn left onto 112th St SW, home will be on the right.



Listed By:  
eXp Realty

Affinity Real Estate Inc. participates in the Regional Multiple Listing Service of Minnesota, Inc Broker Reciprocity (sm) program, allowing us to display other broker's listings on our website. All properties are subject to prior sale, change or withdrawal.



**Call Affinity Real Estate**

**218-237-3333**

**info@affinityrealestate.com**



**Affinity Real Estate - 600 Park Avenue South - Park Rapids MN 56470**



website: [www.AffinityRealEstate.com](http://www.AffinityRealEstate.com) | email: [info@affinityrealestate.com](mailto:info@affinityrealestate.com) | office: 218-237-3333 | fax: 218-237-3377

**Affinity**  
REAL ESTATE INC

**\$329,900**  
MLS 7009220 Residential  
4400 112th Street  
Pillager MN 56473



website: [www.AffinityRealEstate.com](http://www.AffinityRealEstate.com) | email: [info@affinityrealestate.com](mailto:info@affinityrealestate.com) | office: 218-237-3333 | fax: 218-237-3377

**Affinity**  
REAL ESTATE INC

**\$329,900**  
MLS 7009220 Residential  
4400 112th Street  
Pillager MN 56473



website: [www.AffinityRealEstate.com](http://www.AffinityRealEstate.com) | email: [info@affinityrealestate.com](mailto:info@affinityrealestate.com) | office: 218-237-3333 | fax: 218-237-3377

**Affinity**  
REAL ESTATE INC

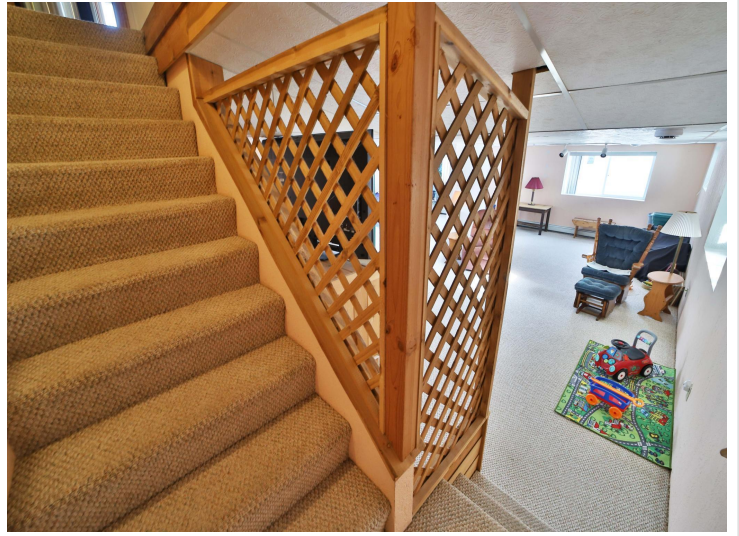
**\$329,900**  
MLS 7009220 Residential  
4400 112th Street  
Pillager MN 56473



website: [www.AffinityRealEstate.com](http://www.AffinityRealEstate.com) | email: [info@affinityrealestate.com](mailto:info@affinityrealestate.com) | office: 218-237-3333 | fax:218-237-3377

**Affinity**  
REAL ESTATE INC

**\$329,900**  
MLS 7009220 Residential  
4400 112th Street  
Pillager MN 56473



website: [www.AffinityRealEstate.com](http://www.AffinityRealEstate.com) | email: [info@affinityrealestate.com](mailto:info@affinityrealestate.com) | office: 218-237-3333 | fax:218-237-3377

**Affinity**  
REAL ESTATE INC

**\$329,900**  
MLS 7009220 Residential  
4400 112th Street  
Pillager MN 56473



website: [www.AffinityRealEstate.com](http://www.AffinityRealEstate.com) | email: [info@affinityrealestate.com](mailto:info@affinityrealestate.com) | office: 218-237-3333 | fax:218-237-3377

**Affinity**  
REAL ESTATE INC

**\$329,900**  
MLS 7009220 Residential  
4400 112th Street  
Pillager MN 56473



website: [www.AffinityRealEstate.com](http://www.AffinityRealEstate.com) | email: [info@affinityrealestate.com](mailto:info@affinityrealestate.com) | office: 218-237-3333 | fax:218-237-3377

**Affinity**  
REAL ESTATE INC

**\$329,900**  
MLS 7009220 Residential  
4400 112th Street  
Pillager MN 56473



website: [www.AffinityRealEstate.com](http://www.AffinityRealEstate.com) | email: [info@affinityrealestate.com](mailto:info@affinityrealestate.com) | office: 218-237-3333 | fax:218-237-3377

**Affinity**  
REAL ESTATE INC

**\$329,900**  
MLS 7009220 Residential  
4400 112th Street  
Pillager MN 56473



website: [www.AffinityRealEstate.com](http://www.AffinityRealEstate.com) | email: [info@affinityrealestate.com](mailto:info@affinityrealestate.com) | office: 218-237-3333 | fax: 218-237-3377

**Affinity**  
REAL ESTATE INC

**\$329,900**  
MLS 7009220 Residential  
4400 112th Street  
Pillager MN 56473



website: [www.AffinityRealEstate.com](http://www.AffinityRealEstate.com) | email: [info@affinityrealestate.com](mailto:info@affinityrealestate.com) | office: 218-237-3333 | fax:218-237-3377



**\$329,900**  
MLS 7009220 Residential  
4400 112th Street  
Pillager MN 56473



website: [www.AffinityRealEstate.com](http://www.AffinityRealEstate.com) | email: [info@affinityrealestate.com](mailto:info@affinityrealestate.com) | office: 218-237-3333 | fax:218-237-3377

**Affinity**  
REAL ESTATE INC

**\$329,900**  
MLS 7009220 Residential  
4400 112th Street  
Pillager MN 56473



website: [www.AffinityRealEstate.com](http://www.AffinityRealEstate.com) | email: [info@affinityrealestate.com](mailto:info@affinityrealestate.com) | office: 218-237-3333 | fax:218-237-3377



**\$329,900**  
MLS 7009220 Residential  
4400 112th Street  
Pillager MN 56473