



MLS 7009967 Residential

**\$537,500**

2,903 sq ft  
5 bedrooms  
3 baths

25415 Twin Leaf Circle  
Nisswa MN 56468

Status: Active

#### Description:

"Retreat XXL" plan, enjoy comfort and modern elegance. This captivating home features 5 bedrooms, 3 baths, a spacious 3-stall garage, and a lower level finish. Your dreams take center stage here, as the "Retreat XXL" plan offers an expansive XL family room and the freedom to select finishes, colors, and options. Create a home that mirrors your unique style, from the flooring to the fixtures, can be personalized to make it truly yours. At Thomas Allen Homes, we believe that crafting your dream home should be a seamless experience. Our commitment is to ensure your journey is not just stress-free but exciting. With a range of choice lots in prime locations, the perfect setting for your new home awaits. There's no need to wait for the right season—secure your spot now and embark on this incredible journey toward owning your dream home.

#### Additional Details:

Year Built	2026
Lot Acres	7688
Lot Dimensions	92x83x87x100
Garage Stalls	3
School District	896
Taxes	\$394
Taxes with Assessments	\$394
Tax Year	2025

#### Additional Features:

**Fuel:** Array **Heat:** Forced Air

#### Driving Directions:

FROM Brainerd, North on 371 to Cty Rd 18 (lights south end of Downtown), turn right, straight through round-about 2 blocks to Community on right. FROM Nisswa, take Lakers Ln in front of Elementary east 2 blocks.



Listed By:  
Edina Realty, Inc.

Affinity Real Estate Inc. participates in the Regional Multiple Listing Service of Minnesota, Inc Broker Reciprocity (sm) program, allowing us to display other broker's listings on our website. All properties are subject to prior sale, change or withdrawal.



Call Affinity Real Estate

**218-237-3333**

[info@affinityrealestate.com](mailto:info@affinityrealestate.com)



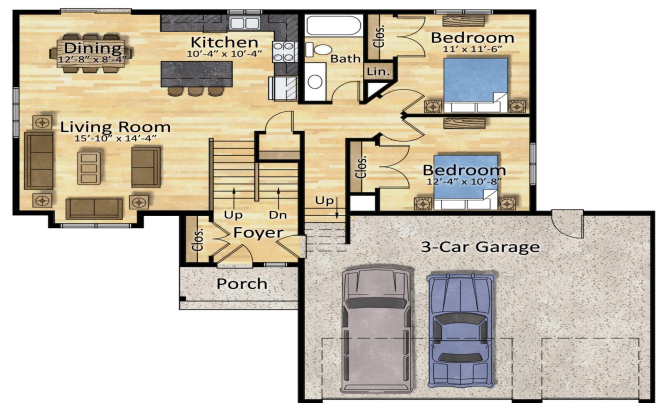
Affinity Real Estate - 600 Park Avenue South - Park Rapids MN 56470



website: [www.AffinityRealEstate.com](http://www.AffinityRealEstate.com) | email: [info@affinityrealestate.com](mailto:info@affinityrealestate.com) | office: 218-237-3333 | fax: 218-237-3377

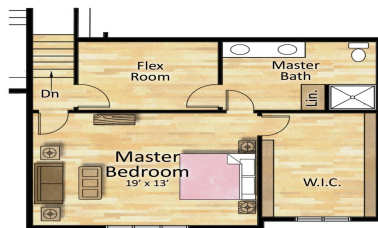
**Affinity**  
REAL ESTATE INC

**\$537,500**  
MLS 7009967 Residential  
25415 Twin Leaf Circle  
Nisswa MN 56468



First Floor Plan

ResidentialRendering.com



Upper Floor Plan

ResidentialRendering.com



Lower Floor Plan

ResidentialRendering.com

website: [www.AffinityRealEstate.com](http://www.AffinityRealEstate.com) | email: [info@affinityrealestate.com](mailto:info@affinityrealestate.com) | office: 218-237-3333 | fax: 218-237-3377



**\$537,500**

MLS 7009967 Residential  
25415 Twin Leaf Circle  
Nisswa MN 56468



Lower Floor Plan

ResidentialRendering.com

website: [www.AffinityRealEstate.com](http://www.AffinityRealEstate.com) | email: [info@affinityrealestate.com](mailto:info@affinityrealestate.com) | office: 218-237-3333 | fax:218-237-3377



**\$537,500**  
 MLS 7009967 Residential  
 25415 Twin Leaf Circle  
 Nisswa MN 56468