



MLS 7010072 Residential

\$243,777

1,795 sq ft
4 bedrooms
2 baths

702 Adolphus Avenue
Fergus Falls MN 56537

Status: Active

Description:

4BR Corner-Lot Home with 2 Garages and Main-Floor Living!

This isn't your average 1915 home. Fully prepared for its next owner, this property boasts a new high-efficiency furnace and new flooring throughout the first and second floors. The highly desirable layout includes a main-floor primary bedroom with an ensuite bath and a dedicated space for main-floor stackable laundry—perfect for those seeking easy accessibility.

Outside, the 0.26-acre lot offers incredible utility with two detached garages, including a giant 24' x 40' shop for boats, cars, or a home business. Complete with stainless steel appliances, a cozy lower-level family room, and a location close to local schools and parks, this home offers more features per square foot than anything else on the market!

Additional Details:

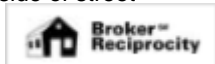
Year Built	1915
Lot Acres	0.258
Lot Dimensions	150x75
Garage Stalls	2
School District	1944
Taxes	\$2,281
Taxes with Assessments	\$2,366
Tax Year	2025

Additional Features:

Basement: Block, Daylight/Lookout Windows, Full, Partially Finished **Fuel:** Array **Garage:** 2 **Heat:** Forced Air **Sewer:** City Sewer/Connected
Water: City Water/Connected **Air Conditioning:** Central Air

Driving Directions:

South on South Union Turn East on East Channing Turn South on Sheridan St. Turn East on East Adolphus Property on the South side of street



Listed By:
eXp Realty

Affinity Real Estate Inc. participates in the Regional Multiple Listing Service of Minnesota, Inc Broker Reciprocity (sm) program, allowing us to display other broker's listings on our website. All properties are subject to prior sale, change or withdrawal.



Call Affinity Real Estate

218-237-3333

info@affinityrealestate.com



Affinity Real Estate - 600 Park Avenue South - Park Rapids MN 56470



website: www.AffinityRealEstate.com | email: info@affinityrealestate.com | office: 218-237-3333 | fax: 218-237-3377



\$243,777
 MLS 7010072 Residential
 702 Adolphus Avenue
 Fergus Falls MN 56537



website: www.AffinityRealEstate.com | email: info@affinityrealestate.com | office: 218-237-3333 | fax: 218-237-3377



\$243,777
 MLS 7010072 Residential
 702 Adolphus Avenue
 Fergus Falls MN 56537



website: www.AffinityRealEstate.com | email: info@affinityrealestate.com | office: 218-237-3333 | fax: 218-237-3377



\$243,777
 MLS 7010072 Residential
 702 Adolphus Avenue
 Fergus Falls MN 56537



website: www.AffinityRealEstate.com | email: info@affinityrealestate.com | office: 218-237-3333 | fax: 218-237-3377



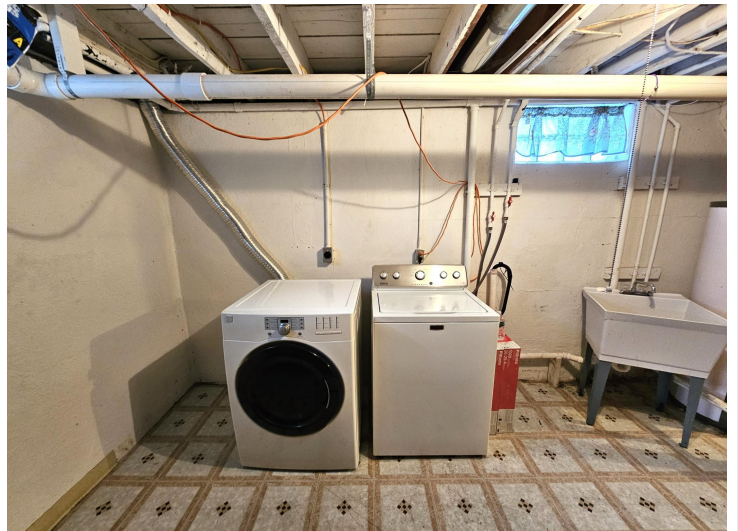
\$243,777
MLS 7010072 Residential
702 Adolphus Avenue
Fergus Falls MN 56537



website: www.AffinityRealEstate.com | email: info@affinityrealestate.com | office: 218-237-3333 | fax: 218-237-3377

Affinity
REAL ESTATE INC

\$243,777
MLS 7010072 Residential
702 Adolphus Avenue
Fergus Falls MN 56537



website: www.AffinityRealEstate.com | email: info@affinityrealestate.com | office: 218-237-3333 | fax: 218-237-3377



\$243,777
 MLS 7010072 Residential
 702 Adolphus Avenue
 Fergus Falls MN 56537



website: www.AffinityRealEstate.com | email: info@affinityrealestate.com | office: 218-237-3333 | fax: 218-237-3377



\$243,777
 MLS 7010072 Residential
 702 Adolphus Avenue
 Fergus Falls MN 56537



website: www.AffinityRealEstate.com | email: info@affinityrealestate.com | office: 218-237-3333 | fax: 218-237-3377



\$243,777
 MLS 7010072 Residential
 702 Adolphus Avenue
 Fergus Falls MN 56537



website: www.AffinityRealEstate.com | email: info@affinityrealestate.com | office: 218-237-3333 | fax: 218-237-3377



\$243,777
MLS 7010072 Residential
702 Adolphus Avenue
Fergus Falls MN 56537



website: www.AffinityRealEstate.com | email: info@affinityrealestate.com | office: 218-237-3333 | fax: 218-237-3377



\$243,777
MLS 7010072 Residential
702 Adolphus Avenue
Fergus Falls MN 56537