



MLS 7010075 Residential

**\$225,000**

1,188 sq ft  
3 bedrooms  
1 baths

44969 County 97  
Solway MN 56678

Status: Active

**Description:**

Enjoy privacy, space, and modern updates on this beautiful 9-acre property in Solway, located just 20 miles from Bemidji and abutting public land for endless outdoor recreation. Built in 2010, this 3-bedroom, 1-bath home features an open floor plan and is set well back from the road, offering a peaceful, private setting surrounded by nature.

The interior has been completely refreshed with extensive updates including new flooring and carpeting throughout, complete new kitchen and appliances, updated plumbing, a new water heater, and a new water softener. A newly added deck expands the living space outdoors—perfect for relaxing, entertaining, or enjoying the sights and sounds of the Northwoods. The land offers a scenic mix of mature trees, high ground, and lowland, creating excellent wildlife habitat and opportunities for hunting, exploring, and outdoor enjoyment. With ample space for horses, a hobby farm, or recreational use, this property provides the flexibility to match a variety of lifestyles.

Whether you're seeking a full-time residence, weekend getaway, or private Northwoods retreat, this property delivers modern comfort paired with acreage, privacy, and unmatched access to the outdoors. Furnishings are negotiable and maybe available for purchase.

**Additional Details:**

Year Built	2010
Lot Acres	9
Lot Dimensions	467x1321x197x865x270x467
School District	1386
Taxes	\$1,285
Taxes with Assessments	\$1,506
Tax Year	2025

**Additional Features:**

**Fuel:** Array **Heat:** Forced Air

**Driving Directions:**

From Solway head south on Centerline Rd N toward 1st St for 12 miles. Continue straight onto County 97 for 1.5 miles. Turn Left to stay on County 97 for 1.7 miles and turn right to property



Listed By:  
Realty ONE Group Choice

Affinity Real Estate Inc. participates in the Regional Multiple Listing Service of Minnesota, Inc Broker Reciprocity (sm) program, allowing us to display other broker's listings on our website. All properties are subject to prior sale, change or withdrawal.



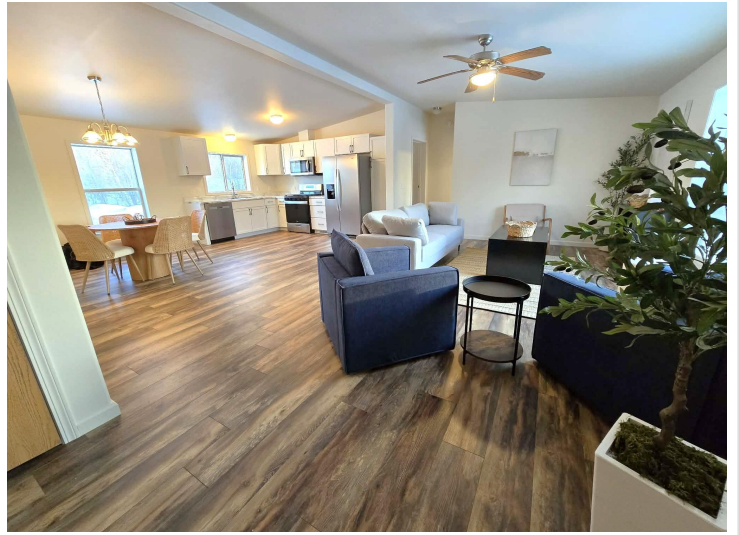
**Call Affinity Real Estate**

**218-237-3333**

**info@affinityrealestate.com**



**Affinity Real Estate - 600 Park Avenue South - Park Rapids MN 56470**



website: [www.AffinityRealEstate.com](http://www.AffinityRealEstate.com) | email: [info@affinityrealestate.com](mailto:info@affinityrealestate.com) | office: 218-237-3333 | fax: 218-237-3377



**\$225,000**  
 MLS 7010075 Residential  
 44969 County 97  
 Solway MN 56678

website: [www.AffinityRealEstate.com](http://www.AffinityRealEstate.com) | email: [info@affinityrealestate.com](mailto:info@affinityrealestate.com) | office: 218-237-3333 | fax:218-237-3377



**\$225,000**

MLS 7010075 Residential  
44969 County 97  
Solway MN 56678