



MLS 7010188 Residential

\$389,900

2,438 sq ft
4 bedrooms
2 baths

37214 WOODLAND DR
Cohasset MN 55721

Status: Active

Description:

Meticulously maintained home on almost 3 acres in quiet Cohasset neighborhood. This 4 bed, 2 bath home has had many updates including, new south side windows, new kitchen island and recently restained deck. You will enjoy the large yard with plenty of privacy. This house is complete with a walk out basement, steel roof, 2 stall attached garage and a fireplace both upstairs and down making a very warm and cozy living space. This move in ready home has everything you're looking for! Schedule your showing today! You won't be disappointed!

Additional Details:

Year Built	1970
Lot Acres	2.54
Lot Dimensions	570 x 280
Garage Stalls	2
School District	1410
Taxes	\$2,123
Taxes with Assessments	\$2,204
Tax Year	2025

Additional Features:

Basement: Block, Walkout **Fuel:** Array **Garage:** 2 **Heat:** Forced Air **Sewer:** Private Sewer **Water:** Well **Air Conditioning:** Central Air

Driving Directions:

HWY 2 WEST THRU COHASSET TO PINCHERRY RD (#88) 2 MI. TO LEFT ON WOODLAND DR. TO SIGN.



Listed By:
MN DIRECT PROPERTIES

Affinity Real Estate Inc. participates in the Regional Multiple Listing Service of Minnesota, Inc Broker Reciprocity (sm) program, allowing us to display other broker's listings on our website. All properties are subject to prior sale, change or withdrawal.



Call Affinity Real Estate

218-237-3333

info@affinityrealestate.com



Affinity Real Estate - 600 Park Avenue South - Park Rapids MN 56470



website: www.AffinityRealEstate.com | email: info@affinityrealestate.com | office: 218-237-3333 | fax: 218-237-3377

Affinity
REAL ESTATE INC

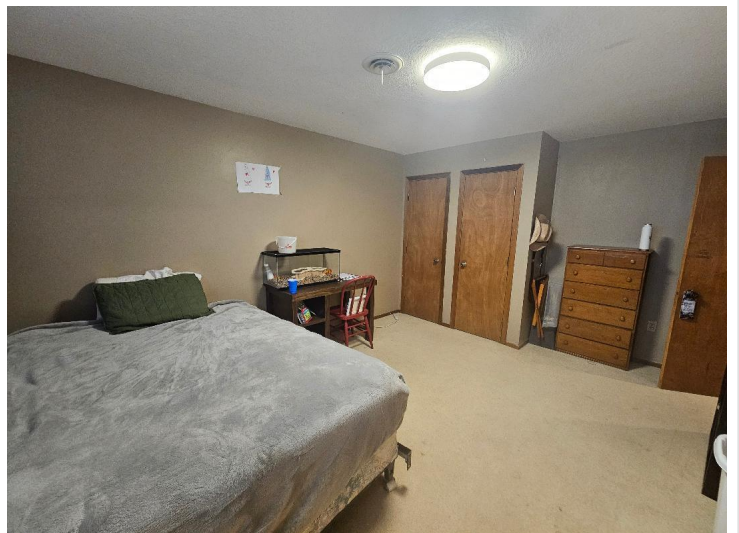
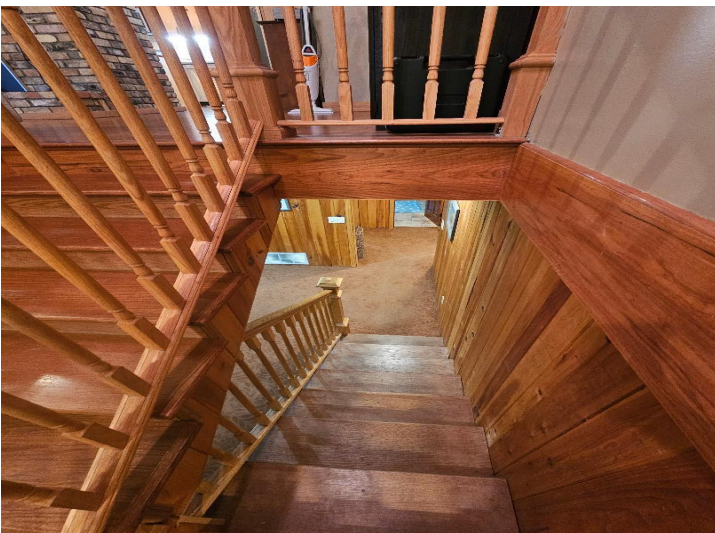
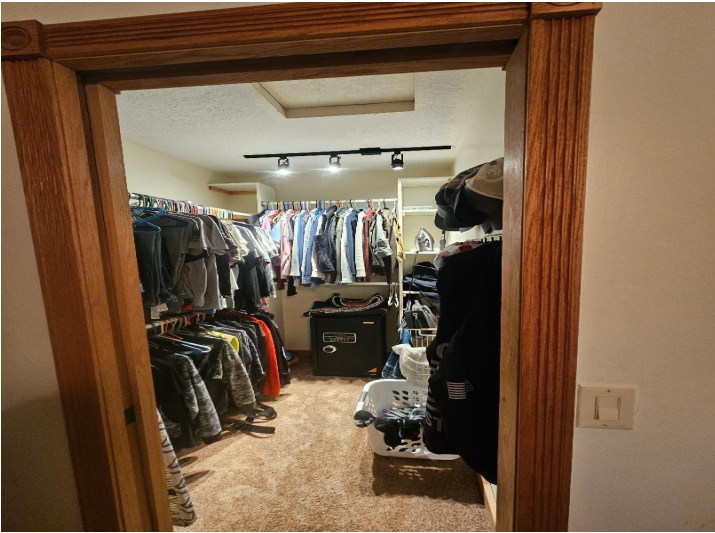
\$389,900
MLS 7010188 Residential
37214 WOODLAND DR
Cohasset MN 55721



website: www.AffinityRealEstate.com | email: info@affinityrealestate.com | office: 218-237-3333 | fax: 218-237-3377

Affinity
REAL ESTATE INC

\$389,900
MLS 7010188 Residential
37214 WOODLAND DR
Cohasset MN 55721



website: www.AffinityRealEstate.com | email: info@affinityrealestate.com | office: 218-237-3333 | fax: 218-237-3377



\$389,900
MLS 7010188 Residential
37214 WOODLAND DR
Cohasset MN 55721



website: www.AffinityRealEstate.com | email: info@affinityrealestate.com | office: 218-237-3333 | fax: 218-237-3377

Affinity
REAL ESTATE INC

\$389,900
MLS 7010188 Residential
37214 WOODLAND DR
Cohasset MN 55721



website: www.AffinityRealEstate.com | email: info@affinityrealestate.com | office: 218-237-3333 | fax: 218-237-3377



\$389,900
MLS 7010188 Residential
37214 WOODLAND DR
Cohasset MN 55721

website: www.AffinityRealEstate.com | email: info@affinityrealestate.com | office: 218-237-3333 | fax:218-237-3377



\$389,900

MLS 7010188 Residential
37214 WOODLAND DR
Cohasset MN 55721

website: www.AffinityRealEstate.com | email: info@affinityrealestate.com | office: 218-237-3333 | fax:218-237-3377



\$389,900

MLS 7010188 Residential
37214 WOODLAND DR
Cohasset MN 55721