



MLS 7010235 Land

\$35,000

1.36 Acres
Finished Lot(s)

TBD Pueblo Circle
Breezy Point MN 56472

Status: Active

Description:

Enjoy that up-north feel while still being just minutes from lakes, golf, dining, and other Breezy Point amenities. This large lot on a quiet cul-de-sac location with low traffic and privacy but easy access to all the Brainerd Lakes Area has to offer!

Additional Details:

Lot Acres	1.36
Lot Dimensions	155x362x350x195
School District	909
Taxes	\$184
Taxes with Assessments	\$184
Tax Year	2025

Additional Features:

Driving Directions:

MN-371 N to County Rd 11 (Breezy Point). Right on County Rd 11 approx. 3 miles. Right on Ranchette Dr. Right on Pueblo Cir to property.



Listed By:
Edina Realty, Inc.

Affinity Real Estate Inc. participates in the Regional Multiple Listing Service of Minnesota, Inc Broker Reciprocity (sm) program, allowing us to display other broker's listings on our website. All properties are subject to prior sale, change or withdrawal.



Call Affinity Real Estate

218-237-3333

info@affinityrealestate.com



Affinity Real Estate - 600 Park Avenue South - Park Rapids MN 56470



10170612

January 17, 2026

1:1,280
0 0.01 0.02 0.04 mi
0 0.03 0.05 0.10 km

Click Here for Property Information

website: www.AffinityRealEstate.com | email: info@affinityrealestate.com | office: 218-237-3333 | fax: 218-237-3377



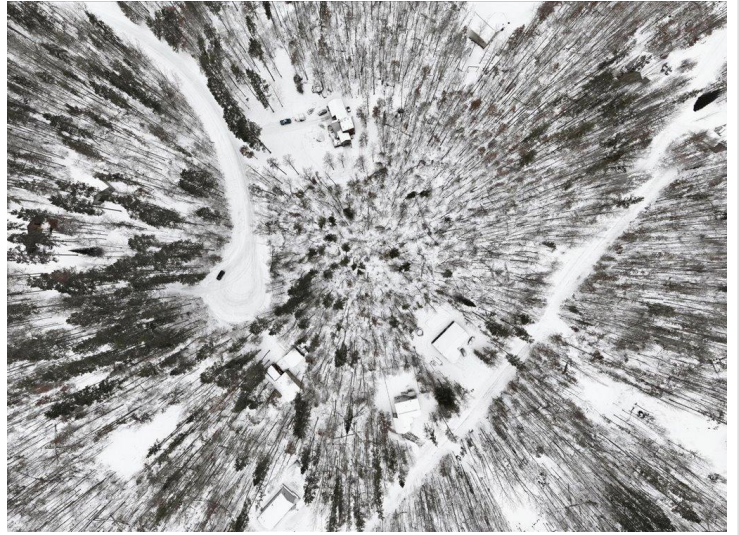
\$35,000
MLS 7010235 Land
TBD Pueblo Circle
Breezy Point MN 56472



website: www.AffinityRealEstate.com | email: info@affinityrealestate.com | office: 218-237-3333 | fax:218-237-3377



\$35,000
MLS 7010235 Land
TBD Pueblo Circle
Breezy Point MN 56472



website: www.AffinityRealEstate.com | email: info@affinityrealestate.com | office: 218-237-3333 | fax:218-237-3377



\$35,000
MLS 7010235 Land
TBD Pueblo Circle
Breezy Point MN 56472