



MLS 7010422 Residential

**\$399,900**

2,080 sq ft  
3 bedrooms  
2 baths

23474 County Road 2  
Brainerd MN 56401

Status: Coming Soon

**Description:**

Don't miss this well cared for, three bedroom, two bath Brainerd home resting on just under an acre! You will enjoy ample living space, updated kitchen, newer flooring, updated bathrooms, two decks, custom cabinets, and so much more! The heated/insulated garage/poll building is perfect for projects, extra storage, and room for all of your toys. Enjoy country living at its finest with this gem, Schedule Your Showing Today!

**Additional Details:**

Year Built	1960
Lot Acres	0.96
Lot Dimensions	150 x 275
Garage Stalls	4
School District	896
Taxes	\$2,026
Taxes with Assessments	\$2,026
Tax Year	2025

**Additional Features:**

**Fuel:** Array **Heat:** Forced Air, In-Floor Heating

**Driving Directions:**

From 25/18 Jct in Brainerd - South on 25 - 10.4 miles - left on County Road 2 (Dewing Hwy) 9.4 mi on LH side. From Garrison - South on 169 approx. 5 miles - right on 460th St - 5-6 miles on RH side



Listed By:  
eXp Realty

Affinity Real Estate Inc. participates in the Regional Multiple Listing Service of Minnesota, Inc Broker Reciprocity (sm) program, allowing us to display other broker's listings on our website. All properties are subject to prior sale, change or withdrawal.



**Call Affinity Real Estate**

**218-237-3333**

**info@affinityrealestate.com**



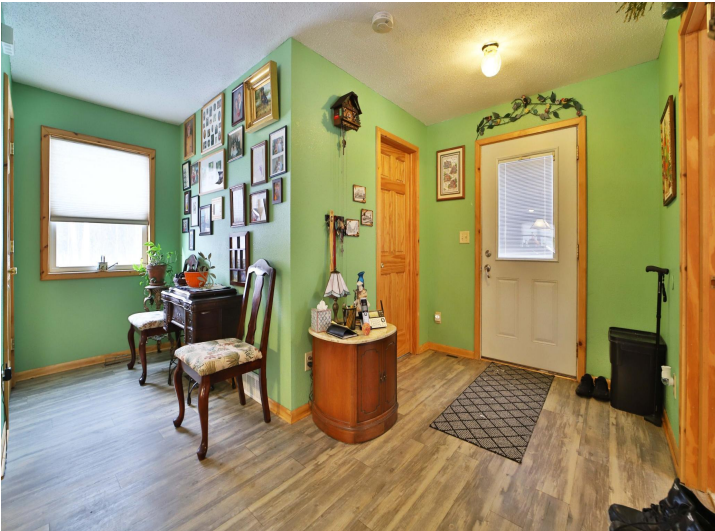
**Affinity Real Estate - 600 Park Avenue South - Park Rapids MN 56470**



website: [www.AffinityRealEstate.com](http://www.AffinityRealEstate.com) | email: [info@affinityrealestate.com](mailto:info@affinityrealestate.com) | office: 218-237-3333 | fax: 218-237-3377

**Affinity**  
REAL ESTATE INC

**\$399,900**  
MLS 7010422 Residential  
23474 County Road 2  
Brainerd MN 56401



website: [www.AffinityRealEstate.com](http://www.AffinityRealEstate.com) | email: [info@affinityrealestate.com](mailto:info@affinityrealestate.com) | office: 218-237-3333 | fax:218-237-3377

**Affinity**  
REAL ESTATE INC

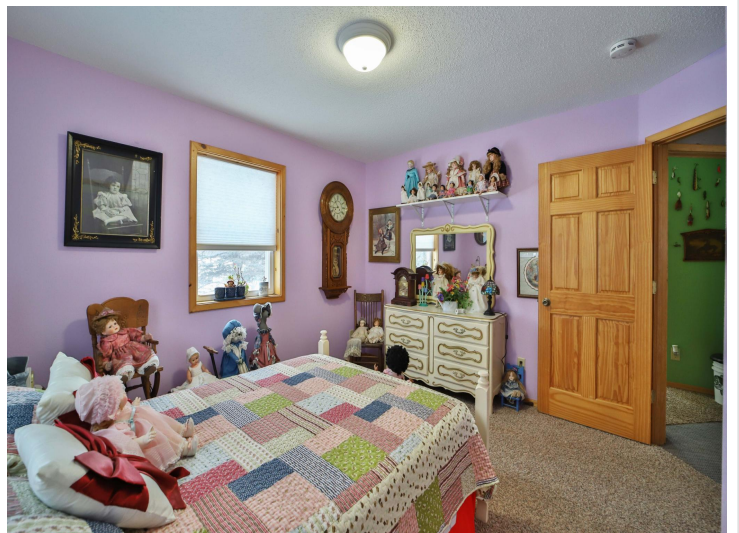
**\$399,900**  
MLS 7010422 Residential  
23474 County Road 2  
Brainerd MN 56401



website: [www.AffinityRealEstate.com](http://www.AffinityRealEstate.com) | email: [info@affinityrealestate.com](mailto:info@affinityrealestate.com) | office: 218-237-3333 | fax: 218-237-3377

**Affinity**  
REAL ESTATE INC

**\$399,900**  
MLS 7010422 Residential  
23474 County Road 2  
Brainerd MN 56401



website: [www.AffinityRealEstate.com](http://www.AffinityRealEstate.com) | email: [info@affinityrealestate.com](mailto:info@affinityrealestate.com) | office: 218-237-3333 | fax: 218-237-3377

**Affinity**  
REAL ESTATE INC

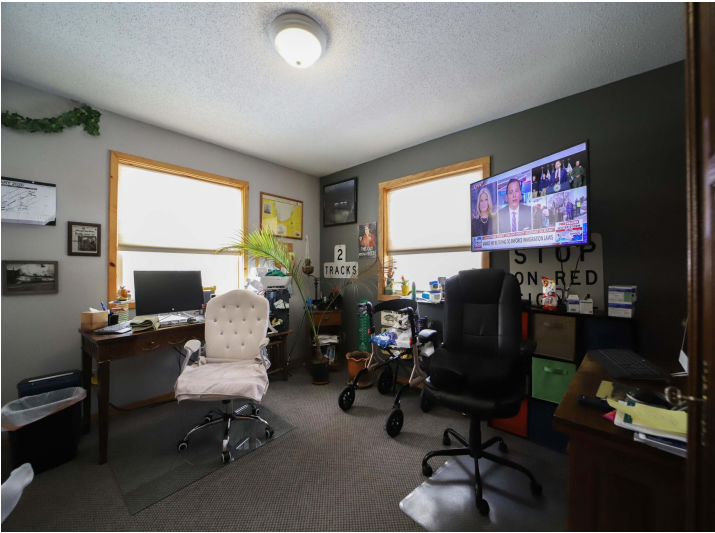
**\$399,900**  
MLS 7010422 Residential  
23474 County Road 2  
Brainerd MN 56401



website: [www.AffinityRealEstate.com](http://www.AffinityRealEstate.com) | email: [info@affinityrealestate.com](mailto:info@affinityrealestate.com) | office: 218-237-3333 | fax:218-237-3377

**Affinity**  
REAL ESTATE INC

**\$399,900**  
MLS 7010422 Residential  
23474 County Road 2  
Brainerd MN 56401



website: [www.AffinityRealEstate.com](http://www.AffinityRealEstate.com) | email: [info@affinityrealestate.com](mailto:info@affinityrealestate.com) | office: 218-237-3333 | fax:218-237-3377

**Affinity**  
REAL ESTATE INC

**\$399,900**  
MLS 7010422 Residential  
23474 County Road 2  
Brainerd MN 56401



website: [www.AffinityRealEstate.com](http://www.AffinityRealEstate.com) | email: [info@affinityrealestate.com](mailto:info@affinityrealestate.com) | office: 218-237-3333 | fax:218-237-3377



**\$399,900**  
MLS 7010422 Residential  
23474 County Road 2  
Brainerd MN 56401