



MLS 7010454 Residential

\$210,000

1,872 sq ft
3 bedrooms
1 baths

3210 Sunnyside Road
Bemidji MN 56601

Status: Active

Description:

Enjoy quiet, out-of-town living in this tucked-away 3-bedroom, 1-bath (another one upstairs needing finishing) home set on nearly 10 acres. Surrounded by nature, the property offers a peaceful setting with abundant wildlife and privacy. Inside, a cozy wood stove adds warmth and charm, creating the perfect retreat. A detached double garage completes this property, which is waiting for the next owner to make it their own. Home needs TLC.

Additional Details:

Year Built	1980
Lot Acres	9.97
Lot Dimensions	330x1320
Garage Stalls	2
School District	1386
Taxes	\$2,658
Taxes with Assessments	\$2,658
Tax Year	2025

Additional Features:

Basement: None **Fuel:** Array **Garage:** 2 **Heat:** Other **Sewer:** Private Sewer **Water:** Well **Air Conditioning:** None

Driving Directions:

East on Power Dam Road to Sunnyside. North one Mile to property.



Listed By:
Grimes Realty

Affinity Real Estate Inc. participates in the Regional Multiple Listing Service of Minnesota, Inc Broker Reciprocity (sm) program, allowing us to display other broker's listings on our website. All properties are subject to prior sale, change or withdrawal.



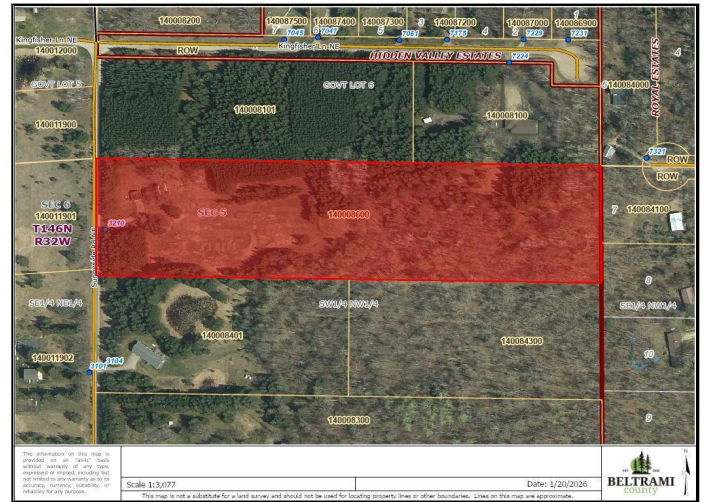
Call Affinity Real Estate

218-237-3333

info@affinityrealestate.com



Affinity Real Estate - 600 Park Avenue South - Park Rapids MN 56470



website: www.AffinityRealEstate.com | email: info@affinityrealestate.com | office: 218-237-3333 | fax: 218-237-3377



\$210,000
 MLS 7010454 Residential
 3210 Sunnyside Road
 Bemidji MN 56601



website: www.AffinityRealEstate.com | email: info@affinityrealestate.com | office: 218-237-3333 | fax: 218-237-3377

Affinity
REAL ESTATE INC

\$210,000
MLS 7010454 Residential
3210 Sunnyside Road
Bemidji MN 56601



website: www.AffinityRealEstate.com | email: info@affinityrealestate.com | office: 218-237-3333 | fax: 218-237-3377



\$210,000
MLS 7010454 Residential
3210 Sunnyside Road
Bemidji MN 56601