



MLS 7010624 Residential

\$325,000

1,800 sq ft
3 bedrooms
3 baths

20365 County Highway 5
Lake Park MN 56554

Status: Active

Description:

1.53 Acres | 1,800 Sq Ft | 3 Bedrooms | 3 Bathrooms | 2- Stall Tuck-Under Garage

Set on 1.53 acres, this thoughtfully updated 1,800 sq ft home blends modern comfort with peaceful country living. The main level features a functional layout with a kitchen, open dining and living area, three bedrooms, and two bathrooms, including a primary suite with a curbless glass shower enclosure—perfect for relaxing at the end of the day. The lower level offers a bonus room, laundry with half bath, and extra storage, while a 2-stall tuck-under garage adds convenience. Recent updates include a durable metal roof, a new furnace with heat pump and plenum heater for efficient year-round comfort, and a brand-new deck ideal for enjoying quiet rural views. With open land perfect for gardening, recreation, or future expansion—and a dog fence already in place—this move-in-ready property offers space and potential making it an ideal opportunity.

Additional Details:

Year Built	1975
Lot Acres	1.53
Lot Dimensions	irr
Garage Stalls	2
School District	1299
Taxes	\$994
Taxes with Assessments	\$994
Tax Year	2025

Additional Features:

Basement: Concrete, Storage Space **Fuel:** Array **Garage:** 2 **Heat:** Forced Air, Heat Pump **Sewer:** Private Sewer **Water:** Well **Air Conditioning:** Central Air

Driving Directions:

Co Hwy 5 about half a mile, East side of road, watch for signs.i



Listed By:
Re/Max Lakes Region

Affinity Real Estate Inc. participates in the Regional Multiple Listing Service of Minnesota, Inc Broker Reciprocity (sm) program, allowing us to display other broker's listings on our website. All properties are subject to prior sale, change or withdrawal.



Call Affinity Real Estate

218-237-3333

info@affinityrealestate.com



Affinity Real Estate - 600 Park Avenue South - Park Rapids MN 56470



website: www.AffinityRealEstate.com | email: info@affinityrealestate.com | office: 218-237-3333 | fax: 218-237-3377

Affinity
REAL ESTATE INC

\$325,000
MLS 7010624 Residential
20365 County Highway 5
Lake Park MN 56554



website: www.AffinityRealEstate.com | email: info@affinityrealestate.com | office: 218-237-3333 | fax: 218-237-3377

Affinity
REAL ESTATE INC

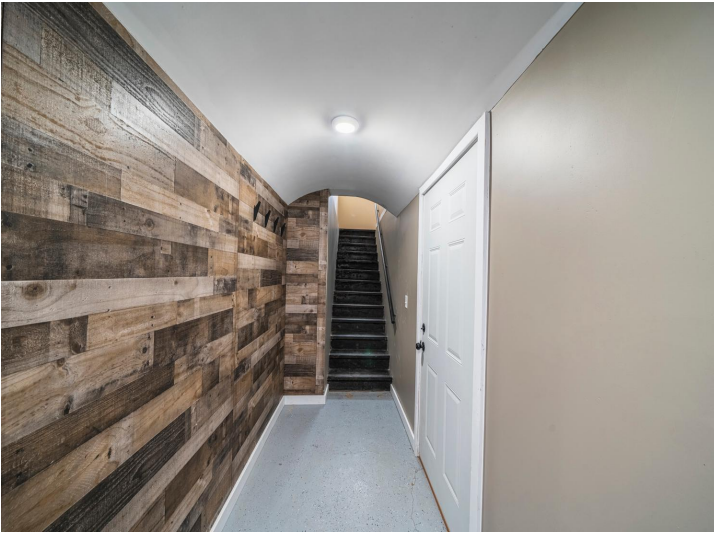
\$325,000
MLS 7010624 Residential
20365 County Highway 5
Lake Park MN 56554



website: www.AffinityRealEstate.com | email: info@affinityrealestate.com | office: 218-237-3333 | fax: 218-237-3377

Affinity
REAL ESTATE INC

\$325,000
MLS 7010624 Residential
20365 County Highway 5
Lake Park MN 56554



website: www.AffinityRealEstate.com | email: info@affinityrealestate.com | office: 218-237-3333 | fax: 218-237-3377

Affinity
REAL ESTATE INC

\$325,000
MLS 7010624 Residential
20365 County Highway 5
Lake Park MN 56554



website: www.AffinityRealEstate.com | email: info@affinityrealestate.com | office: 218-237-3333 | fax: 218-237-3377



\$325,000

MLS 7010624 Residential
20365 County Highway 5
Lake Park MN 56554



website: www.AffinityRealEstate.com | email: info@affinityrealestate.com | office: 218-237-3333 | fax: 218-237-3377



\$325,000

MLS 7010624 Residential
20365 County Highway 5
Lake Park MN 56554