



MLS 7010725 Residential

\$564,900

1,722 sq ft
3 bedrooms
2 baths

15828 Old Stonebridge Trail
Brainerd MN 56401

Status: Active

Description:

New construction! Perfectly situated in an amazing location just minutes from town. Nestled on a spacious half-acre lot, this peaceful neighborhood features a community walking path around a charming small lake and is surrounded by other quality homes, creating a truly welcoming environment. Inside, you'll find a thoughtfully designed 3BR layout with vaulted ceilings and an inviting electric fireplace. The primary bath features a tiled walk-in shower, dual vanities with quartz countertops, and elegant finishes throughout. The kitchen is sure to impress with custom cabinets, quartz countertops, large island, and slate steel appliances. Additional highlights include LP siding, luxury vinyl plank flooring, 3 panel mission style doors, covered front porch, forced air heating & in-floor radiant heat, central air, heated garage. This home combines quality craftsmanship, modern finishes, and an unbeatable location, don't miss this chance to make it yours! Virtual Staging used in photos.

Additional Details:

Year Built	2025
Lot Acres	0.53
Lot Dimensions	90x203x140x203
Garage Stalls	3
School District	896
Taxes	\$407
Taxes with Assessments	\$407
Tax Year	2025

Additional Features:

Basement: None **Fuel:** Array **Garage:** 3 **Heat:** Forced Air, Hot Water, In-Floor Heating **Sewer:** City Sewer/Connected **Water:** City Water/Connected **Air Conditioning:** Central Air

Driving Directions:

From Brainerd - East on Riverside Dr - Left on Ashmun Rd - Right on Old Stonebridge Trail to property on right.



Listed By:
NextHome Horizons

Affinity Real Estate Inc. participates in the Regional Multiple Listing Service of Minnesota, Inc Broker Reciprocity (sm) program, allowing us to display other broker's listings on our website. All properties are subject to prior sale, change or withdrawal.



Call Affinity Real Estate

218-237-3333

info@affinityrealestate.com



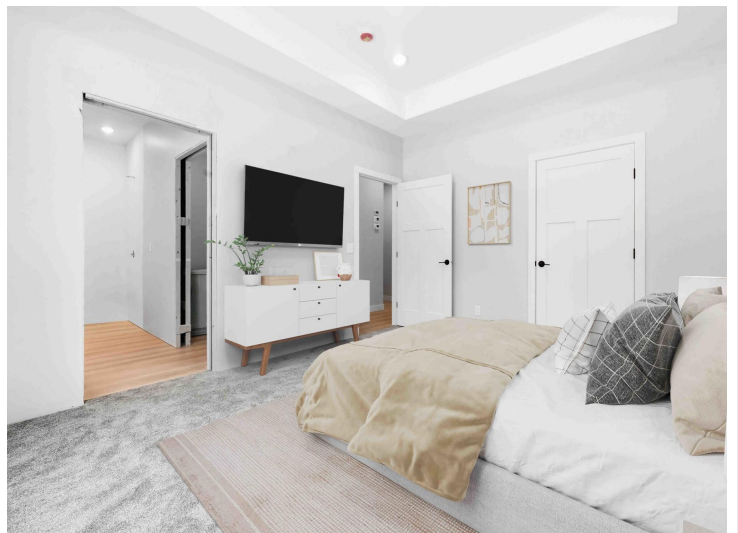
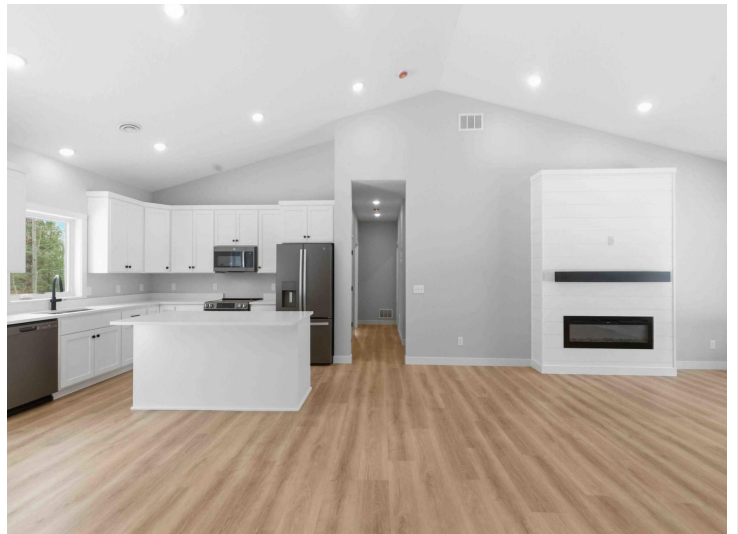
Affinity Real Estate - 600 Park Avenue South - Park Rapids MN 56470



website: www.AffinityRealEstate.com | email: info@affinityrealestate.com | office: 218-237-3333 | fax: 218-237-3377



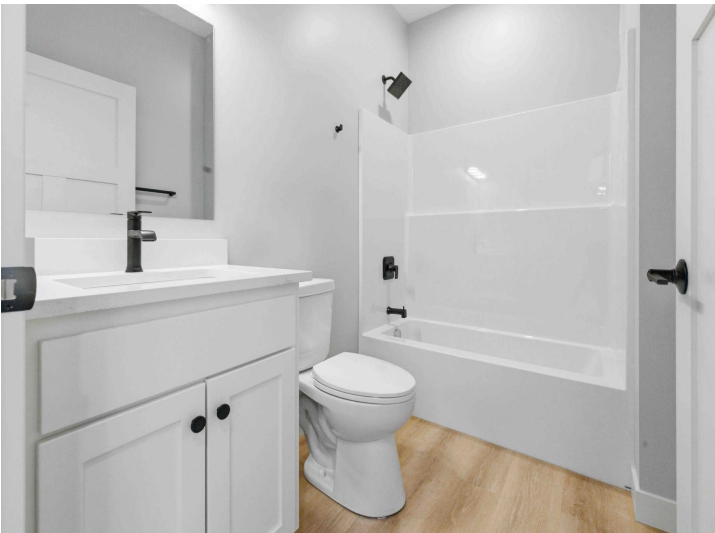
\$564,900
 MLS 7010725 Residential
 15828 Old Stonebridge Trail
 Brainerd MN 56401



website: www.AffinityRealEstate.com | email: info@affinityrealestate.com | office: 218-237-3333 | fax: 218-237-3377



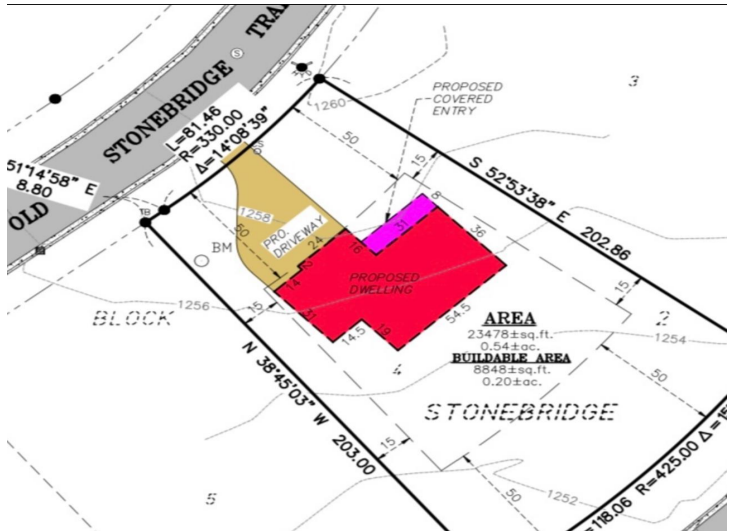
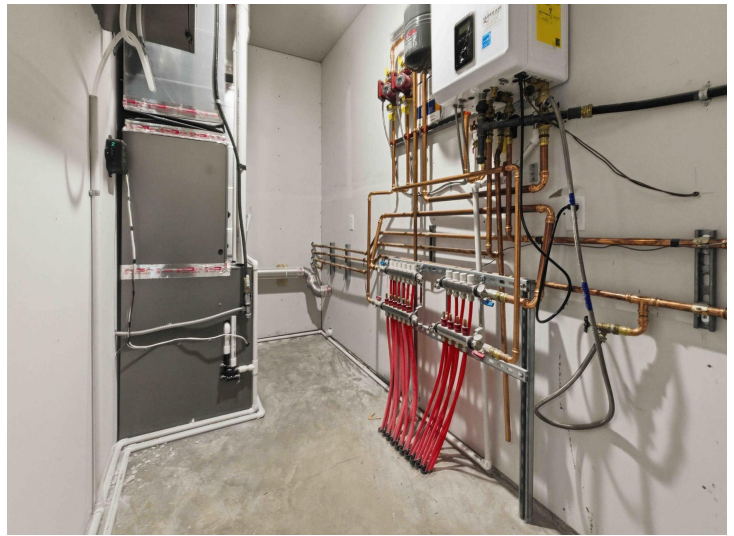
\$564,900
 MLS 7010725 Residential
 15828 Old Stonebridge Trail
 Brainerd MN 56401



website: www.AffinityRealEstate.com | email: info@affinityrealestate.com | office: 218-237-3333 | fax: 218-237-3377



\$564,900
 MLS 7010725 Residential
 15828 Old Stonebridge Trail
 Brainerd MN 56401



Page 5 of 9



website: www.AffinityRealEstate.com | email: info@affinityrealestate.com | office: 218-237-3333 | fax: 218-237-3377



\$564,900
 MLS 7010725 Residential
 15828 Old Stonebridge Trail
 Brainerd MN 56401



website: www.AffinityRealEstate.com | email: info@affinityrealestate.com | office: 218-237-3333 | fax: 218-237-3377



\$564,900

MLS 7010725 Residential
15828 Old Stonebridge Trail
Brainerd MN 56401

website: www.AffinityRealEstate.com | email: info@affinityrealestate.com | office: 218-237-3333 | fax:218-237-3377



\$564,900

MLS 7010725 Residential
15828 Old Stonebridge Trail
Brainerd MN 56401

website: www.AffinityRealEstate.com | email: info@affinityrealestate.com | office: 218-237-3333 | fax: 218-237-3377



\$564,900

MLS 7010725 Residential
15828 Old Stonebridge Trail
Brainerd MN 56401