



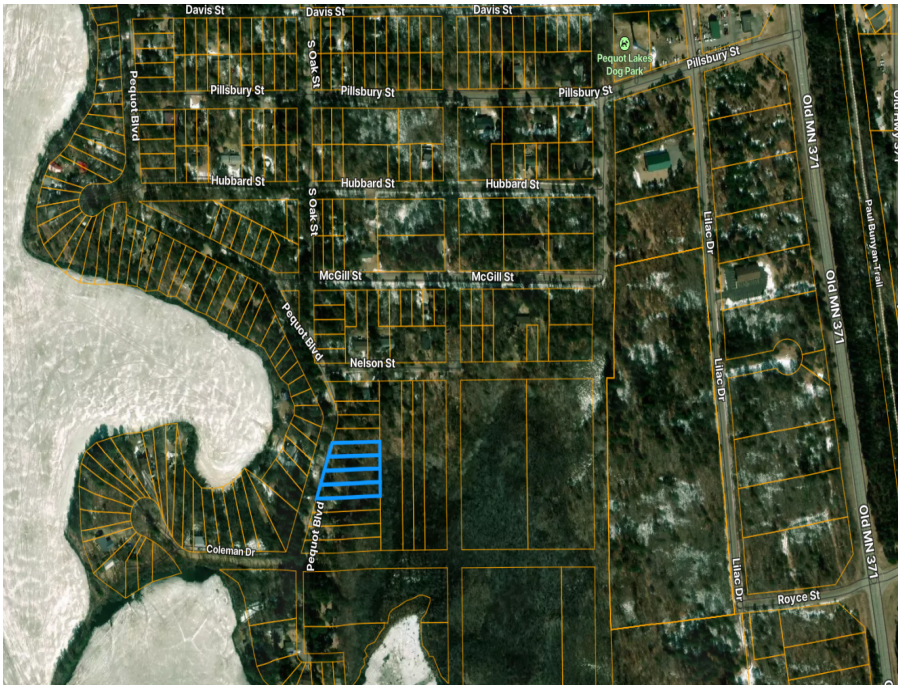
MLS 7010925 Land

\$34,500

0.32 Acres
Raw Land

00000 Pequot Boulevard
Pequot Lakes MN 56472

Status: Active



Description:

Parcels, (29150688, 29150689, 29150690, 29150691) each approximately 0.34 acres, a total of 1.36 acres, assemblage of vacant land located on Pequot Blvd in Pequot Lakes, MN. This parcel offers convenient access to local shops, restaurants, and everyday amenities while being just minutes from the area’s many lakes, trails, and outdoor recreation. A great opportunity for a future homesite or long-term investment in a desirable lakes-area community. Enjoy the charm of Pequot Lakes with easy access to the surrounding Brainerd Lakes attractions

Additional Details:

Lot Acres	0.32
Lot Dimensions	53x286
School District	909
Taxes	\$54
Taxes with Assessments	\$54
Tax Year	2025

Additional Features:

Driving Directions:

Start by heading toward Pequot Blvd.
Continue straight on the main road for approximately 0.5 miles until you reach the first major intersection.
Turn onto Pequot Blvd in the direction of 30034.
Drive along Pequot Blvd for about 0.5 miles.
Look for the property on the left-hand side.



Listed By:
Jeff Hagel

Affinity Real Estate Inc. participates in the Regional Multiple Listing Service of Minnesota, Inc Broker Reciprocity (sm) program, allowing us to display other broker’s listings on our website. All properties are subject to prior sale, change or withdrawal.



Call Affinity Real Estate

218-237-3333

info@affinityrealestate.com



Affinity Real Estate - 600 Park Avenue South - Park Rapids MN 56470



website: www.AffinityRealEstate.com | email: info@affinityrealestate.com | office: 218-237-3333 | fax:218-237-3377



\$34,500
MLS 7010925 Land
00000 Pequot Boulevard
Pequot Lakes MN 56472