



MLS 7011138 Land

**\$149,900**

15.47 Acres  
Subdivided

Tract C Carlson Drive  
Rochert MN 56578

Status: Active



**Description:**

Outdoor lovers dream lot and location with incredible water and forest views. This private wooded undeveloped lot has no covenants and is located on the South end of Pickerel Lake and adjacent to the Pickerel Wildlife Management Area and very close to 635 acres of state owned land. Just a few miles away from Cotton Lake and the Tamarac National Wildlife Refuge. This area provides close access to snow mobile and ATV trails, hiking & skiing trails and great fishing and hunting.

**Additional Details:**

Lot Acres	15.47
Lot Dimensions	248x450
School District	1074
Taxes	(unreported)
Taxes with Assessments	(unreported)
Tax Year	2025

**Additional Features:**

**Driving Directions:**

From Detroit Lakes, take US HWY 34 East 7.5 miles to CH-29, turn left and follow North 2 miles to CH-32, turn left and follow West 1 mile to 330th Ave, turn left and follow to Carlson Drive. Look for sign on the left.



Listed By:  
REMAX Lakes Region

Affinity Real Estate Inc. participates in the Regional Multiple Listing Service of Minnesota, Inc Broker Reciprocity (sm) program, allowing us to display other broker's listings on our website. All properties are subject to prior sale, change or withdrawal.



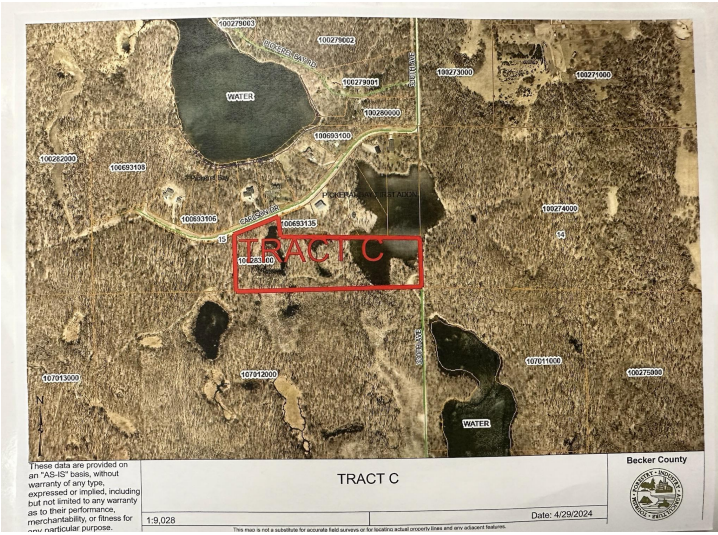
Call Affinity Real Estate

**218-237-3333**

[info@affinityrealestate.com](mailto:info@affinityrealestate.com)



Affinity Real Estate - 600 Park Avenue South - Park Rapids MN 56470



website: [www.AffinityRealEstate.com](http://www.AffinityRealEstate.com) | email: [info@affinityrealestate.com](mailto:info@affinityrealestate.com) | office: 218-237-3333 | fax:218-237-3377



**\$149,900**  
 MLS 7011138 Land  
 Tract C Carlson Drive  
 Rochert MN 56578



website: [www.AffinityRealEstate.com](http://www.AffinityRealEstate.com) | email: [info@affinityrealestate.com](mailto:info@affinityrealestate.com) | office: 218-237-3333 | fax:218-237-3377



**\$149,900**  
MLS 7011138 Land  
Tract C Carlson Drive  
Rochert MN 56578



website: [www.AffinityRealEstate.com](http://www.AffinityRealEstate.com) | email: [info@affinityrealestate.com](mailto:info@affinityrealestate.com) | office: 218-237-3333 | fax:218-237-3377



**\$149,900**  
MLS 7011138 Land  
Tract C Carlson Drive  
Rochert MN 56578



website: [www.AffinityRealEstate.com](http://www.AffinityRealEstate.com) | email: [info@affinityrealestate.com](mailto:info@affinityrealestate.com) | office: 218-237-3333 | fax:218-237-3377



**\$149,900**  
MLS 7011138 Land  
Tract C Carlson Drive  
Rochert MN 56578

